

p-Bcl-2 (A-3): sc-377513

BACKGROUND

Apoptosis is defined as a set of cascades which, when initiated, programs the cell to undergo lethal changes such as membrane blebbing, mitochondrial break down and DNA fragmentation. Bcl-2 is one among many key regulators of apoptosis, which are essential for proper development, tissue homeostasis, and protection against foreign pathogens. Human Bcl-2 is an anti-apoptotic, membrane-associated oncoprotein that can promote cell survival through protein-protein interactions with other Bcl-2 related family members, such as the death suppressors Bcl-x_L, Mcl-1, Bcl-w, and A1 or the death agonists Bax, Bak, Bik, Bad, and Bid. The anti-apoptotic function of Bcl-2 can also be regulated through proteolytic processing and phospho-rylation. Bcl-2 may promote cell survival by interfering with the activation of the cytochrome c/Apaf-1 pathway through stabilization of the mitochondrial membrane. Mutations in the Bcl-2 gene can contribute to cancers where normal physiological cell death mechanisms are compromised by deregulation of the anti-apoptotic influence of Bcl-2.

REFERENCES

1. Kerr, J.F., et al. 1972. Apoptosis: a basic biological phenomenon with wide-ranging implications in tissue kinetics. *Br. J. Cancer* 26: 239-257.
2. Hockenbery, D., et al. 1990. Bcl-2 is an inner mitochondrial membrane protein that blocks programmed cell death. *Nature* 348: 334-336.
3. Alnemri, E.S., et al. 1992. Overexpressed full-length human BCL2 extends the survival of baculovirus-infected Sf9 insect cells. *Proc. Natl. Acad. Sci. USA* 89: 7295-7299.
4. Reed, J.C. 1994. Bcl-2 and the regulation of programmed cell death. *J. Cell Biol.* 124: 1-6.
5. Haldar, S., et al. 1995. Inactivation of Bcl-2 by phosphorylation. *Proc. Natl. Acad. Sci. USA* 92: 4507-4511.
6. Yang, J., et al. 1997. Prevention of apoptosis by Bcl-2: release of cytochrome c from mitochondria blocked. *Science* 275: 1129-1132.
7. Adams, J.M., et al. 1998. The Bcl-2 protein family: arbiters of cell survival. *Science* 281: 1322-1326.

CHROMOSOMAL LOCATION

Genetic locus: BCL2 (human) mapping to 18q21.33.

SOURCE

p-Bcl-2 (A-3) is a mouse monoclonal antibody epitope corresponding to a short amino acid sequence containing Thr 74 phosphorylated Bcl-2 of human origin.

PRODUCT

Each vial contains 200 µg IgG_{2b} kappa light chain in 1.0 ml of PBS with < 0.1% sodium azide and 0.1% gelatin.

Blocking peptide available for competition studies, sc-377513 P, (100 µg peptide in 0.5 ml PBS containing < 0.1% sodium azide and 0.2% stabilizer protein).

APPLICATIONS

p-Bcl-2 (A-3) is recommended for detection of Thr 74 phosphorylated Bcl-2 of human origin by Western Blotting (starting dilution 1:100, dilution range 1:100-1:1000), immunoprecipitation [1-2 µg per 100-500 µg of total protein (1 ml of cell lysate)], immunofluorescence (starting dilution 1:50, dilution range 1:50-1:500) and solid phase ELISA (starting dilution 1:30, dilution range 1:30-1:3000).

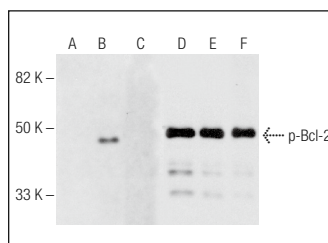
Suitable for use as control antibody for Bcl-2 siRNA (h): sc-29214, Bcl-2 shRNA Plasmid (h): sc-29214-SH and Bcl-2 shRNA (h) Lentiviral Particles: sc-29214-V.

Molecular Weight of p-Bcl-2: 26 kDa.

RECOMMENDED SUPPORT REAGENTS

To ensure optimal results, the following support reagents are recommended: 1) Western Blotting: use m-IgGκ BP-HRP: sc-516102 or m-IgGκ BP-HRP (Cruz Marker): sc-516102-CM (dilution range: 1:1000-1:10000), Cruz Marker™ Molecular Weight Standards: sc-2035, TBS Blotto B Blocking Reagent: sc-2335 (use 50 mM NaF, sc-24988, as diluent), Lambda Phosphatase: sc-200312A and Western Blotting Luminol Reagent: sc-2048. 2) Immunoprecipitation: use Protein A/G PLUS-Agarose: sc-2003 (0.5 ml agarose/2.0 ml). 3) Immunofluorescence: use m-IgGκ BP-FITC: sc-516140 or m-IgGκ BP-PE: sc-516141 (dilution range: 1:50-1:200) with UltraCruz® Mounting Medium: sc-24941 or UltraCruz® Hard-set Mounting Medium: sc-359850.

DATA



Western blot analysis of Bcl-2 phosphorylation in untreated (A,D), human recombinant ERK 2 treated (B,E) and human recombinant ERK 2 and lambda protein phosphatase (sc-200312A) treated (C,F) human recombinant Bcl-2 fusion proteins. Antibodies tested include p-Bcl-2 (A-3): sc-377513 (A,B,C) and Bcl-2 (C-2): sc-7382 (D,E,F).

STORAGE

Store at 4° C, **DO NOT FREEZE**. Stable for one year from the date of shipment. Non-hazardous. No MSDS required.

RESEARCH USE

For research use only, not for use in diagnostic procedures.

PROTOCOLS

See our web site at www.scbt.com for detailed protocols and support products.