

A-375 Cell Lysate: sc-3811

BACKGROUND

Santa Cruz Biotechnology offers a variety of whole cell lysates for use in combination with our antibodies as Western Blotting controls. A-375 Whole Cell Lysate is derived from the A-375 cell line using a procedure that ensures protein integrity and lot-to-lot reproducibility. All lysates are tested by Western Blotting to assure that each one contains the expected concentration and assortment of proteins. Numerous antibodies directed against a wide array of mammalian proteins are used to test each lysate.

The A-375 cell line was established from a 54 year old female.

REFERENCES

- Giard, D.J., Aaronson, S.A., Todaro, G.J., Arnstein, P., Kersey, J.H., Dosik, H. and Parks, W.P. 1973. *In vitro* cultivation of human tumors: establishment of cell lines derived from a series of solid tumors. *J. Natl. Cancer Inst.* 51: 1417-1423.
- Gershwin, M.E., Ikeda, R.M., Kawakami, T.G. and Owens, R.B. 1977. Immunobiology of heterotransplanted human tumors in nude mice. *J. Natl. Cancer Inst.* 58: 1455-1463.
- Cormier, J.N., Hijazi, Y.M., Abati, A., Fetsch, P., Bettinotti, M., Steinberg, S.M., Rosenberg, S.A. and Marincola, F.M. 1998. Heterogeneous expression of melanoma-associated antigens and HLA-A2 in metastatic melanoma *in vivo*. *Int. J. Cancer* 75: 517-524.

SOURCE

A-375 Cell Lysate is derived from the A-375 cell line.

Organism: *Homo sapiens* (human)
Organ: Skin
Disease: Malignant melanoma
Growth Properties: Adherent

PRODUCT

Each vial contains 500 µg protein in 200 µl of an SDS-PAGE Western Blotting buffer, which consists of 100 µl RIPA Lysis Buffer and 100 µl Electrophoresis Buffer, 2X.

APPLICATIONS

A-375 Whole Cell Lysate is provided as a Western Blotting positive control. Recommended use is 50 µg (20 µl) per lane. Sample vial should be boiled once prior to use.

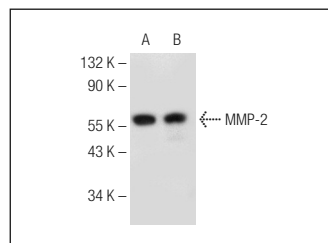
PREPARATION METHOD

Cells are cultured with appropriate media conditions and allowed to reach a confluency of 75%. Cells are lysed using the RIPA Lysis Buffer System (sc-24948). The BCA Protein Assay Kit (sc-202389) is used to determine the total protein concentration. The lysate is adjusted to contain 500 µg of total cellular protein in 100 µl before adding an equal volume of Electrophoresis Sample Buffer, 2X (sc-24945). Final concentration of product is 500 µg total protein in a final volume of 200 µl.

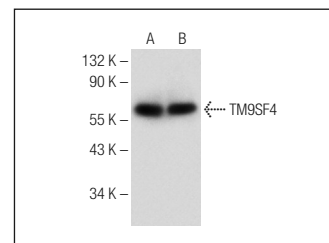
STORAGE

Store at -20° C; stable for one year from the date of shipment. Non-hazardous. No MSDS required. Minimize repeated freezing and thawing.

DATA



MMP-2 (G-7): sc-373914. Western blot analysis of MMP-2 expression in ECV304 (A) and A-375 (B) whole cell lysates.



TM9SF4 (A-3): sc-374473. Western blot analysis of TM9SF4 expression in MIA PaCa-2 (A) and A-375 (B) whole cell lysates.

RESEARCH USE

For research use only, not for use in diagnostic procedures.

PROTOCOLS

See our web site at www.scbt.com or our catalog for detailed protocols and support products.