

normal mouse IgG_{2a}: sc-3878

BACKGROUND

Santa Cruz Biotechnology offers a wide variety of control immunoglobulin and control sera for a large selection of species, including mouse, rabbit, goat, chicken, rat, hamster, dog, guinea pig and sheep. Control immunoglobulin and immunoglobulin conjugates are useful negative controls. Normal sera is offered to be used as blocking reagents. Santa Cruz Biotechnology offers affinity purified normal immunoglobulins and immunoglobulin conjugates for use as negative controls in applications including flow cytometry, immunohistochemistry, immunofluorescence, Western Blotting and immunoprecipitation. Agarose (AC) conjugated IgGs are provided for immunoprecipitation, horseradish peroxidase (HRP) conjugates are provided for Western blotting and immunohistochemistry, as well as biotin (B) conjugates for immunohistochemistry. A broad range of fluorescent conjugated controls are also available for use in flow cytometry and immunofluorescence applications. Most control immunoglobulins are available as unconjugated controls or as FITC (fluorescein isothiocyanate), PE (phycoerythrin), PE-Cy5 (phycoerythrin-Cy5), PE-Cy7 (phycoerythrin-Cy7), APC (allophycocyanin) and APC-Cy7 (allophycocyanin-Cy7) conjugates. Additional conjugates include Alexa Fluor® 488, Alexa Fluor® 647, Alexa Fluor® 405, PerCP (peridinin chlorophyll protein complex) and PerCP-Cy5.5 (peridinin chlorophyll protein complex-Cy 5.5). Isotype specific control immunoglobulins include classes such as mouse IgG₁, IgG_{2a}, IgG_{2b}, IgG₃, IgM and IgA, rat IgG₁, IgG_{2a}, IgG_{2b} and IgM, Armenian hamster IgG, and both goat and rabbit IgG.

SOURCE

normal mouse IgG_{2a} is an affinity purified, unconjugated conjugated isotype control immunoglobulin from mouse.

PRODUCT

Each vial contains 100 tests in 2 ml of PBS, 0.1% gelatin and 0.1% sodium azide.

APPLICATIONS

normal mouse IgG_{2a} is recommended for use as an isotype control immunoglobulin in place of a target specific primary antibody of the same isotype (mouse IgG_{2a}) by flow cytometry. To be used at an assay dependent dilution.

RECOMMENDED SUPPORT PRODUCTS

A. FLOW CYTOMETRY SUPPORT PRODUCTS

- FCM Lysing solution: sc-3621
- FCM Fixation Buffer: sc-3622
- FCM Permeabilization Buffer: sc-3623
- FCM Wash Buffer: sc-3624
- Intracellular FCM System: sc-45063
- PBS: 1 L of 1X: sc-362182
- Paraformaldehyde: sc-253236

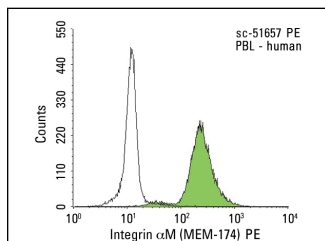
B. ALTERNATIVE SUPPORT PRODUCTS

- EDTA, Tetrasodium Salt, Ultra Pure: sc-391059
- 0.5% Trypsin-EDTA Solution 10X: sc-363354

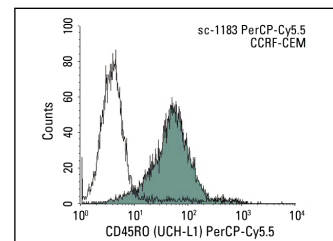
STORAGE

Store at 4° C, **DO NOT FREEZE**. Stable for one year from the date of shipment. Non-hazardous. No MSDS required.

DATA



goat anti-mouse IgG_{2a}-FITC: sc-2079. Indirect FCM analysis of human peripheral blood leukocytes stained with Integrin αM (MEM-174), followed by FITC-conjugated goat anti-mouse IgG_{2a}: sc-2079. Black line histogram represents the isotype control, normal mouse IgG_{2a}: sc-3878. Antibody tested: Integrin αM (MEM-174): sc-51657.



normal mouse IgG_{2a}: sc-3878. Indirect FCM analysis of CCRF-CEM stained with CD45RO (UCH-L1), followed by PerCP-Cy5.5-conjugated goat anti-mouse IgG_{2a}: sc-45104. Black line histogram represents the isotype control, normal mouse IgG_{2a}: sc-3878. Antibody tested: CD45RO (UCH-L1): sc-1183.

SELECT PRODUCT CITATIONS

- Collins, J.J., et al. 2010. Inflammation in fetal sheep from intra-amniotic injection of *Ureaplasma parvum*. Am. J. Physiol Lung Cell. Mol. Physiol. 299: L852-L860.
- Lardone, P.J., et al. 2011. Melatonin synthesized by T lymphocytes as a ligand of the retinoic acid-related orphan receptor. J. Pineal Res. 51: 454-462.

RESEARCH USE

For research use only, not for use in diagnostic procedures.

PROTOCOLS

See our web site at www.scbt.com for detailed protocols and support products.