

# CCL27 (G-6): sc-390112

## BACKGROUND

Cutaneous T cell-attracting chemokine, CCL27 (also designated CTACK, ILC, ALP and skinkine) is a member of the chemokine superfamily and the sub-family of  $\beta$  or C-C chemokines that binds chemokine receptor CCR10 (GPR-2). Chemokines are a superfamily of small secreted proteins that attract their targets by interacting with G protein-coupled receptors expressed on the migrating cell. CCL27 and CCR10 are involved in skin homeostasis and inflammatory response. CCL27 is found in human keratinocytes and mouse epidermis; CCR10 is expressed by melanocytes, dermal fibroblasts and dermal microvascular endothelial cells and in T cells, as well as in skin-derived Langerhans cells. CCL27 is involved in the preferential migration and recruitment of cutaneous lymphocyte-associated antigen CLA<sup>+</sup> memory lymphocytes.

## REFERENCES

1. Baggiolini, M. 1998. Chemokines and leukocyte traffic. *Nature* 392: 565-568.
2. Morales, J., et al. 1999. CTACK, a skin-associated chemokine that preferentially attracts skin-homing memory T cells. *Proc. Natl. Acad. Sci. USA* 96: 14470-14475.
3. Ishikawa-Mochizuki, I., et al. 1999. Molecular cloning of a novel CC chemokine, interleukin-11 receptor  $\alpha$ -locus chemokine (ILC), which is located on chromosome 9p13 and a potential homologue of a CC chemokine encoded by molluscum contagiosum virus. *FEBS Lett.* 460: 544-548.

## CHROMOSOMAL LOCATION

Genetic locus: CCL27 (human) mapping to 9p13.3; Ccl27a (mouse) mapping to 4 A5.

## SOURCE

CCL27 (G-6) is a mouse monoclonal antibody specific for an epitope mapping between amino acids 85-109 at the C-terminus of CCL27 of human origin.

## PRODUCT

Each vial contains 200  $\mu$ g IgG<sub>1</sub> kappa light chain in 1.0 ml of PBS with < 0.1% sodium azide and 0.1% gelatin.

CCL27 (G-6) is available conjugated to agarose (sc-390112 AC), 500  $\mu$ g/0.25 ml agarose in 1 ml, for IP; to HRP (sc-390112 HRP), 200  $\mu$ g/ml, for WB, IHC(P) and ELISA; to either phycoerythrin (sc-390112 PE), fluorescein (sc-390112 FITC), Alexa Fluor<sup>®</sup> 488 (sc-390112 AF488), Alexa Fluor<sup>®</sup> 546 (sc-390112 AF546), Alexa Fluor<sup>®</sup> 594 (sc-390112 AF594) or Alexa Fluor<sup>®</sup> 647 (sc-390112 AF647), 200  $\mu$ g/ml, for WB (RGB), IF, IHC(P) and FCM; and to either Alexa Fluor<sup>®</sup> 680 (sc-390112 AF680) or Alexa Fluor<sup>®</sup> 790 (sc-390112 AF790), 200  $\mu$ g/ml, for Near-Infrared (NIR) WB, IF and FCM.

Blocking peptide available for competition studies, sc-390112 P, (100  $\mu$ g peptide in 0.5 ml PBS containing < 0.1% sodium azide and 0.2% stabilizer protein).

Alexa Fluor<sup>®</sup> is a trademark of Molecular Probes, Inc., Oregon, USA

## RESEARCH USE

For research use only, not for use in diagnostic procedures.

## APPLICATIONS

CCL27 (G-6) is recommended for detection of CCL27 of mouse, rat and human origin by Western Blotting (starting dilution 1:100, dilution range 1:100-1:1000), immunoprecipitation [1-2  $\mu$ g per 100-500  $\mu$ g of total protein (1 ml of cell lysate)], immunofluorescence (starting dilution 1:50, dilution range 1:50-1:500) and solid phase ELISA (starting dilution 1:30, dilution range 1:30-1:3000).

Suitable for use as control antibody for CCL27 siRNA (h): sc-39346, CCL27 siRNA (m): sc-39347, CCL27 shRNA Plasmid (h): sc-39346-SH, CCL27 shRNA Plasmid (m): sc-39347-SH, CCL27 shRNA (h) Lentiviral Particles: sc-39346-V and CCL27 shRNA (m) Lentiviral Particles: sc-39347-V.

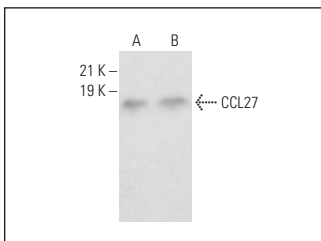
Molecular Weight of CCL27: 10 kDa.

Positive Controls: c4 whole cell lysate: sc-364186 or Neuro-2A whole cell lysate: sc-364185.

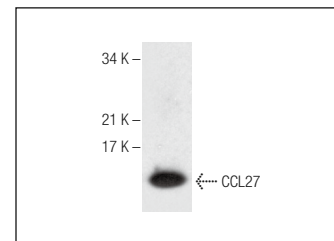
## RECOMMENDED SUPPORT REAGENTS

To ensure optimal results, the following support reagents are recommended: 1) Western Blotting: use m-IgG $\kappa$  BP-HRP: sc-516102 or m-IgG $\kappa$  BP-HRP (Cruz Marker): sc-516102-CM (dilution range: 1:1000-1:10000), Cruz Marker<sup>™</sup> Molecular Weight Standards: sc-2035, UltraCruz<sup>®</sup> Blocking Reagent: sc-516214 and Western Blotting Luminol Reagent: sc-2048. 2) Immunoprecipitation: use Protein A/G PLUS-Agarose: sc-2003 (0.5 ml agarose/2.0 ml). 3) Immunofluorescence: use m-IgG $\kappa$  BP-FITC: sc-516140 or m-IgG $\kappa$  BP-PE: sc-516141 (dilution range: 1:50-1:200) with UltraCruz<sup>®</sup> Mounting Medium: sc-24941 or UltraCruz<sup>®</sup> Hard-set Mounting Medium: sc-359850.

## DATA



CCL27 (G-6): sc-390112. Western blot analysis of CCL27 expression in Neuro-2A (A) and c4 (B) whole cell lysates.



CCL27 (G-6): sc-390112. Western blot analysis of human recombinant CCL27.

## SELECT PRODUCT CITATIONS

1. Karnezis, T., et al. 2019. CCL27/CCL28-CCR10 chemokine signaling mediates migration of lymphatic endothelial cells. *Cancer Res.* 79: 1558-1572.
2. Niwamoto, T., et al. 2021. Cutaneous T-cell-attracting chemokine as a novel biomarker for predicting prognosis of idiopathic pulmonary fibrosis: a prospective observational study. *Respir. Res.* 22: 181.

## STORAGE

Store at 4° C, \*\*DO NOT FREEZE\*\*. Stable for one year from the date of shipment. Non-hazardous. No MSDS required.