

▶ TEX44 (B-1): sc-390142

BACKGROUND

Chromosome 2, the second largest human chromosome, consists of 237 million bases encoding over 1,400 genes, comprising approximately 8% of the human genome. A number of genetic diseases are linked to genes on chromosome 2. Harlequin ichthyosis, a rare and morbid skin deformity, is associated with mutations in the ABCA12 gene. The lipid metabolic disorder sitosterolemia is associated with ABCG5 and ABCG8. An extremely rare recessive genetic disorder, Alström syndrome is due to mutations in the ALMS1 gene. Interestingly, chromosome 2 contains what appears to be a vestigial second centromere and vestigial telomeres, which gives credence to the hypothesis that human chromosome 2 is the result of an ancient fusion of two ancestral chromosomes seen in modern form today in apes.

REFERENCES

1. Ijdo, J.W., et al. 1991. Origin of human chromosome 2: an ancestral telomere-telomere fusion. *Proc. Natl. Acad. Sci. USA* 88: 9051-9055.
2. Avarello, R., et al. 1992. Evidence for an ancestral alphoid domain on the long arm of human chromosome 2. *Hum. Genet.* 89: 247-249.
3. Hillier, L.W., et al. 2005. Generation and annotation of the DNA sequences of human chromosomes 2 and 4. *Nature* 434: 724-731.
4. Thomas, A.C., et al. 2006. ABCA12 is the major harlequin ichthyosis gene. *J. Invest. Dermatol.* 126: 2408-2413.
5. Akiyama, M., et al. 2007. Compound heterozygous ABCA12 mutations including a novel nonsense mutation underlie harlequin ichthyosis. *Dermatology* 215: 155-159.
6. Marshall, J.D., et al. 2007. Alström syndrome. *Eur. J. Hum. Genet.* 15: 1193-1202.
7. Marshall, J.D., et al. 2007. Spectrum of ALMS1 variants and evaluation of genotype-phenotype correlations in Alström syndrome. *Hum. Mutat.* 28: 1114-1123.
8. Tabas, I. 2007. A two-carbon switch to sterol-induced autophagic death. *Autophagy* 3: 38-41.
9. Wang, D.Q. 2007. Regulation of intestinal cholesterol absorption. *Annu. Rev. Physiol.* 69: 221-248.

CHROMOSOMAL LOCATION

Genetic locus: TEX44 (human) mapping to 2q37.1.

SOURCE

TEX44 (B-1) is a mouse monoclonal antibody specific for an epitope mapping between amino acids 367-405 at the C-terminus of TEX44 of human origin.

PRODUCT

Each vial contains 200 µg IgG_{2a} kappa light chain in 1.0 ml of PBS with < 0.1% sodium azide and 0.1% gelatin.

Blocking peptide available for competition studies, sc-390142 P, (100 µg peptide in 0.5 ml PBS containing < 0.1% sodium azide and 0.2% stabilizer protein).

APPLICATIONS

TEX44 (B-1) is recommended for detection of TEX44 of human origin by Western Blotting (starting dilution 1:100, dilution range 1:100-1:1000), immunoprecipitation [1-2 µg per 100-500 µg of total protein (1 ml of cell lysate)], immunofluorescence (starting dilution 1:50, dilution range 1:50-1:500), immunohistochemistry (including paraffin-embedded sections) (starting dilution 1:50, dilution range 1:50-1:500) and solid phase ELISA (starting dilution 1:30, dilution range 1:30-1:3000).

Suitable for use as control antibody for TEX44 siRNA (h): sc-94299, TEX44 shRNA Plasmid (h): sc-94299-SH and TEX44 shRNA (h) Lentiviral Particles: sc-94299-V.

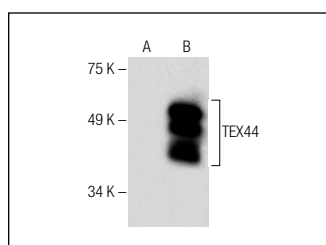
Molecular Weight of TEX44: 42 kDa.

Positive Controls: TEX44 (h): 293T Lysate: sc-175596.

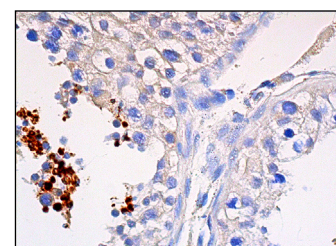
RECOMMENDED SUPPORT REAGENTS

To ensure optimal results, the following support reagents are recommended: 1) Western Blotting: use m-IgGκ BP-HRP: sc-516102 or m-IgGκ BP-HRP (Cruz Marker): sc-516102-CM (dilution range: 1:1000-1:10000), Cruz Marker™ Molecular Weight Standards: sc-2035, UltraCruz® Blocking Reagent: sc-516214 and Western Blotting Luminol Reagent: sc-2048. 2) Immunoprecipitation: use Protein A/G PLUS-Agarose: sc-2003 (0.5 ml agarose/2.0 ml). 3) Immunofluorescence: use m-IgGκ BP-FITC: sc-516140 or m-IgGκ BP-PE: sc-516141 (dilution range: 1:50-1:200) with UltraCruz® Mounting Medium: sc-24941 or UltraCruz® Hard-set Mounting Medium: sc-359850. 4) Immunohistochemistry: use m-IgGκ BP-HRP: sc-516102 with DAB, 50X: sc-24982 and Immunohistomount: sc-45086, or Organo/Limonene Mount: sc-45087.

DATA



TEX44 (B-1): sc-390142. Western blot analysis of TEX44 expression in non-transfected: sc-117752 (A) and human TEX44 transfected: sc-175596 (B) 293T whole cell lysates.



TEX44 (B-1): sc-390142. Immunoperoxidase staining of formalin fixed, paraffin-embedded human testis tissue showing cytoplasmic and nuclear staining of subset of cells in seminiferous ducts.

STORAGE

Store at 4° C, **DO NOT FREEZE**. Stable for one year from the date of shipment. Non-hazardous. No MSDS required.

RESEARCH USE

For research use only, not for use in diagnostic procedures.

PROTOCOLS

See our web site at www.scbt.com for detailed protocols and support products.