

# ADAM26 (G-10): sc-390292

## BACKGROUND

The ADAM (a disintegrin and metalloprotease) protein family, which includes over 30 membrane-anchored, glycosylated,  $Zn^{2+}$  dependent proteases, plays a role in cell-cell and cell-matrix interface related processes, including fertilization, muscle fusion, secretion of  $TNF\alpha$  (tumor necrosis factor  $\alpha$ ), and modulation of the neurogenic function of Notch and Delta. The ADAM proteins possess a signal-domain, a pro-domain, a metalloprotease domain, a disintegrin domain (integrin ligand), a cysteine-rich region, an epidermal growth factor-like domain, a transmembrane domain and a cytoplasmic tail. ADAMs are expressed in a wide range of mammalian tissues and several are abundantly expressed in the male reproductive tract. ADAM26 is a sperm surface membrane protein that may be involved in spermatogenesis and fertilization.

## REFERENCES

1. Wolfsberg, T.G., Primakoff, P., Myles, D.G. and White, J. M. 1995. ADAM, a novel family of membrane proteins containing a disintegrin and metalloprotease domain: multipotential functions in cell-cell and cell-matrix interactions. *J. Cell Biol.* 131: 275-278.
2. Stone, A.L., Kroeger, M. and Sang, Q.X. 1999. Structure-function analysis of the ADAM family of disintegrin-like and metalloproteinase-containing proteins (review). *J. Protein Chem.* 18: 447-465.
3. Zhu, G.Z., Lin, Y., Myles, D.G. and Primakoff, P. 1999. Identification of four novel ADAMs with potential roles in spermatogenesis and fertilization. *Gene* 234: 227-237.
4. Primakoff, P. and Myles, D.G. 2000. The ADAM gene family: surface proteins with adhesion and protease activity. *Trends Genet.* 16: 83-87.

## CHROMOSOMAL LOCATION

Genetic locus: Adam26a (mouse) mapping to 8 A4.

## SOURCE

ADAM26 (G-10) is a mouse monoclonal antibody specific for an epitope mapping between amino acids 523-555 near the C-terminus of ADAM26 of mouse origin.

## PRODUCT

Each vial contains 200  $\mu$ g IgG<sub>2a</sub> kappa light chain in 1.0 ml of PBS with < 0.1% sodium azide and 0.1% gelatin.

ADAM26 (G-10) is available conjugated to agarose (sc-390292 AC), 500  $\mu$ g/0.25 ml agarose in 1 ml, for IP; to HRP (sc-390292 HRP), 200  $\mu$ g/ml, for WB, IHC(P) and ELISA; to either phycoerythrin (sc-390292 PE), fluorescein (sc-390292 FITC), Alexa Fluor® 488 (sc-390292 AF488), Alexa Fluor® 546 (sc-390292 AF546), Alexa Fluor® 594 (sc-390292 AF594) or Alexa Fluor® 647 (sc-390292 AF647), 200  $\mu$ g/ml, for WB (RGB), IF, IHC(P) and FCM; and to either Alexa Fluor® 680 (sc-390292 AF680) or Alexa Fluor® 790 (sc-390292 AF790), 200  $\mu$ g/ml, for Near-Infrared (NIR) WB, IF and FCM.

Blocking peptide available for competition studies, sc-390292 P, (100  $\mu$ g peptide in 0.5 ml PBS containing < 0.1% sodium azide and 0.2% stabilizer protein).

## APPLICATIONS

ADAM26 (G-10) is recommended for detection of ADAM26 of mouse and rat origin by Western Blotting (starting dilution 1:100, dilution range 1:100-1:1000), immunoprecipitation [1-2  $\mu$ g per 100-500  $\mu$ g of total protein (1 ml of cell lysate)], immunofluorescence (starting dilution 1:50, dilution range 1:50-1:500) and solid phase ELISA (starting dilution 1:30, dilution range 1:30-1:3000).

Suitable for use as control antibody for ADAM26 siRNA (m): sc-45926, ADAM26 shRNA Plasmid (m): sc-45926-SH and ADAM26 shRNA (m) Lentiviral Particles: sc-45926-V.

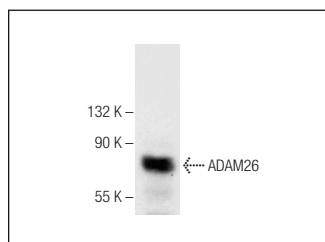
Molecular Weight of ADAM26: 64 kDa.

Positive Controls: F9 cell lysate: sc-2245 or 3T3-L1 cell lysate: sc-2243.

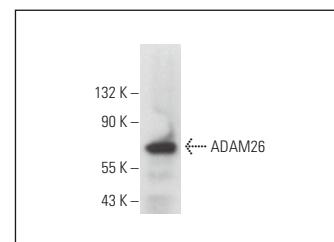
## RECOMMENDED SUPPORT REAGENTS

To ensure optimal results, the following support reagents are recommended: 1) Western Blotting: use m-IgG $\kappa$  BP-HRP: sc-516102 or m-IgG $\kappa$  BP-HRP (Cruz Marker): sc-516102-CM (dilution range: 1:1000-1:10000), Cruz Marker™ Molecular Weight Standards: sc-2035, UltraCruz® Blocking Reagent: sc-516214 and Western Blotting Luminol Reagent: sc-2048. 2) Immunoprecipitation: use Protein A/G PLUS-Agarose: sc-2003 (0.5 ml agarose/2.0 ml). 3) Immunofluorescence: use m-IgG $\kappa$  BP-FITC: sc-516140 or m-IgG $\kappa$  BP-PE: sc-516141 (dilution range: 1:50-1:200) with UltraCruz® Mounting Medium: sc-24941 or UltraCruz® Hard-set Mounting Medium: sc-359850.

## DATA



ADAM26 (G-10): sc-390292. Western blot analysis of ADAM26 expression in F9 whole cell lysate.



ADAM26 (G-10): sc-390292. Western blot analysis of ADAM26 expression in 3T3-L1 whole cell lysate.

## STORAGE

Store at 4° C, \*\*DO NOT FREEZE\*\*. Stable for one year from the date of shipment. Non-hazardous. No MSDS required.

## RESEARCH USE

For research use only, not for use in diagnostic procedures.

## PROTOCOLS

See our web site at [www.scbt.com](http://www.scbt.com) for detailed protocols and support products.

Alexa Fluor® is a trademark of Molecular Probes, Inc., Oregon, USA