

Dysadherin (G-6): sc-390412

BACKGROUND

Dysadherin (FXYP domain-containing ion transport regulator 5) is a cancer-associated cell membrane glycoprotein. Dysadherin down-regulates the expression of E-cadherin, the prime mediator of cell-cell adhesion in epithelial cells, by a posttranscriptional mechanism. Decreasing intercellular adhesiveness facilitates the metastasis of cancer cells. Dysadherin is present in spleen, lung, skeletal muscle, and testis tissue, and maps to human chromosome 19q13.12.

REFERENCES

- Ino, Y., Gotoh, M., Sakamoto, M., Tsukagoshi, K. and Hirohashi, S. 2002. Dysadherin, a cancer-associated cell membrane glycoprotein, down-regulates E-cadherin and promotes metastasis. *Proc. Natl. Acad. Sci. USA* 99: 365-370.
- Shimamura, T., Sakamoto, M., Ino, Y., Sato, Y., Shimada, K., Kosuge, T., Sekihara, H. and Hirohashi S. 2003. Dysadherin overexpression in pancreatic ductal adenocarcinoma reflects tumor aggressiveness: relationship to E-cadherin expression. *J. Clin. Oncol.* 21: 659-667.
- Hirohashi, S. and Kanai, Y. 2003. Cell adhesion system and human cancer morphogenesis. *Cancer Sci.* 7: 575-581.
- Sato, H., Ino, Y., Miura, A., Abe, Y., Sakai, H., Ito, K. and Hirohashi, S. 2003. Dysadherin: expression and clinical significance in thyroid carcinoma. *J. Clin. Endocrinol. Metab.* 9: 4407-4412.
- Wu, D., Qiao, Y., Kristensen, G.B., Li, S., Troen, G., Holm, R., Nesland, J.M. and Suo, Z. 2004. Prognostic significance of Dysadherin expression in cervical squamous cell carcinoma. *Pathol. Oncol. Res.* 10: 212-218.
- Shimamura, T., Yasuda, J., Ino, Y., Gotoh, M., Tsuchiya, A., Nakajima, A., Sakamoto, M., Kanai, Y. and Hirohashi, S. 2004. Dysadherin expression facilitates cell motility and metastatic potential of human pancreatic cancer cells. *Cancer Res.* 64: 6989-6995.

CHROMOSOMAL LOCATION

Genetic locus: FXYP5 (human) mapping to 19q13.12.

SOURCE

Dysadherin (G-6) is a mouse monoclonal antibody specific for an epitope mapping between amino acids 115-153 within a C-terminal extracellular domain of Dysadherin of human origin.

PRODUCT

Each vial contains 200 µg IgG₁ lambda light chain in 1.0 ml of PBS with < 0.1% sodium azide and 0.1% gelatin.

Blocking peptide available for competition studies, sc-390412 P, (100 µg peptide in 0.5 ml PBS containing < 0.1% sodium azide and 0.2% stabilizer protein).

STORAGE

Store at 4° C, ****DO NOT FREEZE****. Stable for one year from the date of shipment. Non-hazardous. No MSDS required.

APPLICATIONS

Dysadherin (G-6) is recommended for detection of Dysadherin isoforms 1 and 2 of human origin by Western Blotting (starting dilution 1:100, dilution range 1:100-1:1000), immunoprecipitation [1-2 µg per 100-500 µg of total protein (1 ml of cell lysate)], immunofluorescence (starting dilution 1:50, dilution range 1:50-1:500) and solid phase ELISA (starting dilution 1:30, dilution range 1:30-1:3000).

Suitable for use as control antibody for Dysadherin siRNA (h): sc-45745, Dysadherin shRNA Plasmid (h): sc-45745-SH and Dysadherin shRNA (h) Lentiviral Particles: sc-45745-V.

Molecular Weight (predicted) of Dysadherin: 19 kDa.

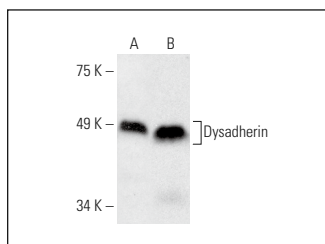
Molecular Weight (observed) of Dysadherin: 35/47 kDa.

Positive Controls: Jurkat whole cell lysate: sc-2204 or JAR cell lysate: sc-2276.

RECOMMENDED SUPPORT REAGENTS

To ensure optimal results, the following support reagents are recommended: 1) Western Blotting: use m-IgGλ BP-HRP: sc-516132 or m-IgGλ BP-HRP (Cruz Marker): sc-516132-CM (dilution range: 1:1000-1:10000), Cruz Marker™ Molecular Weight Standards: sc-2035, UltraCruz® Blocking Reagent: sc-516214 and Western Blotting Luminol Reagent: sc-2048. 2) Immunoprecipitation: use Protein A/G PLUS-Agarose: sc-2003 (0.5 ml agarose/2.0 ml). 3) Immunofluorescence: use m-IgGλ BP-FITC: sc-516185 or m-IgGλ BP-PE: sc-516186 (dilution range: 1:50-1:200) with UltraCruz® Mounting Medium: sc-24941 or UltraCruz® Hard-set Mounting Medium: sc-359850.

DATA



Dysadherin (G-6): sc-390412. Western blot analysis of Dysadherin expression in Jurkat (A) and JAR (B) whole cell lysates.

RESEARCH USE

For research use only, not for use in diagnostic procedures.

PROTOCOLS

See our web site at www.scbt.com for detailed protocols and support products.