

# CLEC-2L (D-5): sc-390424

## BACKGROUND

The C-type lectin/C-type lectin-like domain (CTL/CTLD) superfamily consists of a variety of proteins that share a common protein fold and have diverse functions, including cell-cell signaling, cell adhesion, glycoprotein turnover and immune responses. CLEC-2L (C-type lectin domain family 2 member L) is a 214 amino acid single-pass membrane protein that contains one C-type lectin domain and belongs to the CTL/CTLD superfamily. The gene encoding CLEC-2L maps to human chromosome 7, which houses over 1,000 genes and comprises nearly 5% of the human genome. Chromosome 7 has been linked to osteogenesis imperfecta, Pendred syndrome, lissencephaly, citrullinemia and Shwachman-Diamond syndrome. The deletion of a portion of the q arm of chromosome 7 is associated with Williams-Beuren syndrome, a condition characterized by mild mental retardation, an unusual comfort and friendliness with strangers and an elfin appearance.

## REFERENCES

1. Tsiouras, P., et al. 1983. Restriction fragment length polymorphism associated with the pro  $\alpha$  2(I) gene of human type I procollagen. Application to a family with an autosomal dominant form of osteogenesis imperfecta. *J. Clin. Invest.* 72: 1262-1267.
2. Drickamer, K. 1999. C-type lectin-like domains. *Curr. Opin. Struct. Biol.* 9: 585-590.
3. Iwasaki, S., et al. 2001. Long-term audiological feature in Pendred syndrome caused by PDS mutation. *Arch. Otolaryngol. Head Neck Surg.* 127: 705-708.

## CHROMOSOMAL LOCATION

Genetic locus: CLEC2L (human) mapping to 7q34; Clec2l (mouse) mapping to 6 B1.

## SOURCE

CLEC-2L (D-5) is a mouse monoclonal antibody specific for an epitope mapping between amino acids 157-195 within an internal region of CLEC-2L of human origin.

## PRODUCT

Each vial contains 200  $\mu$ g IgG<sub>2b</sub> kappa light chain in 1.0 ml of PBS with < 0.1% sodium azide and 0.1% gelatin.

CLEC-2L (D-5) is available conjugated to agarose (sc-390424 AC), 500  $\mu$ g/0.25 ml agarose in 1 ml, for IP; to HRP (sc-390424 HRP), 200  $\mu$ g/ml, for WB, IHC(P) and ELISA; to either phycoerythrin (sc-390424 PE), fluorescein (sc-390424 FITC), Alexa Fluor® 488 (sc-390424 AF488), Alexa Fluor® 546 (sc-390424 AF546), Alexa Fluor® 594 (sc-390424 AF594) or Alexa Fluor® 647 (sc-390424 AF647), 200  $\mu$ g/ml, for WB (RGB), IF, IHC(P) and FCM; and to either Alexa Fluor® 680 (sc-390424 AF680) or Alexa Fluor® 790 (sc-390424 AF790), 200  $\mu$ g/ml, for Near-Infrared (NIR) WB, IF and FCM.

Blocking peptide available for competition studies, sc-390424 P, (100  $\mu$ g peptide in 0.5 ml PBS containing < 0.1% sodium azide and 0.2% stabilizer protein).

Alexa Fluor® is a trademark of Molecular Probes, Inc., Oregon, USA

## APPLICATIONS

CLEC-2L (D-5) is recommended for detection of CLEC-2L of mouse, rat and human origin by Western Blotting (starting dilution 1:100, dilution range 1:100-1:1000), immunoprecipitation [1-2  $\mu$ g per 100-500  $\mu$ g of total protein (1 ml of cell lysate)], immunofluorescence (starting dilution 1:50, dilution range 1:50-1:500), immunohistochemistry (including paraffin-embedded sections) (starting dilution 1:50, dilution range 1:50-1:500) and solid phase ELISA (starting dilution 1:30, dilution range 1:30-1:3000).

Suitable for use as control antibody for CLEC-2L siRNA (m): sc-142386, CLEC-2L shRNA Plasmid (m): sc-142386-SH and CLEC-2L shRNA (m) Lentiviral Particles: sc-142386-V.

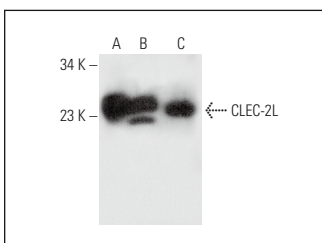
Molecular Weight of CLEC-2L: 24 kDa.

Positive Controls: mouse cerebellum extract: sc-2403, rat cerebellum extract: sc-2398 or human cerebellum extract: sc-516706.

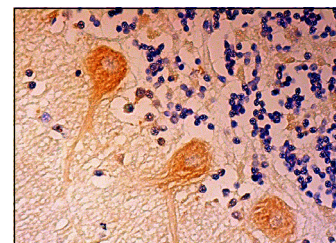
## RECOMMENDED SUPPORT REAGENTS

To ensure optimal results, the following support reagents are recommended: 1) Western Blotting: use m-IgG $\kappa$  BP-HRP: sc-516102 or m-IgG $\kappa$  BP-HRP (Cruz Marker): sc-516102-CM (dilution range: 1:1000-1:10000), Cruz Marker™ Molecular Weight Standards: sc-2035, UltraCruz® Blocking Reagent: sc-516214 and Western Blotting Luminol Reagent: sc-2048. 2) Immunoprecipitation: use Protein A/G PLUS-Agarose: sc-2003 (0.5 ml agarose/2.0 ml). 3) Immunofluorescence: use m-IgG $\kappa$  BP-FITC: sc-516140 or m-IgG $\kappa$  BP-PE: sc-516141 (dilution range: 1:50-1:200) with UltraCruz® Mounting Medium: sc-24941 or UltraCruz® Hard-set Mounting Medium: sc-359850. 4) Immunohistochemistry: use m-IgG $\kappa$  BP-HRP: sc-516102 with DAB, 50X: sc-24982 and Immunohistomount: sc-45086, or Organo/Limonene Mount: sc-45087.

## DATA



CLEC-2L (D-5): sc-390424. Western blot analysis of CLEC-2L expression in human cerebellum (A), rat cerebellum (B) and mouse cerebellum (C) tissue extracts.



CLEC-2L (D-5): sc-390424. Immunoperoxidase staining of formalin fixed, paraffin-embedded human cerebellum tissue showing cytoplasmic staining of Purkinje cells.

## STORAGE

Store at 4° C, \*\*DO NOT FREEZE\*\*. Stable for one year from the date of shipment. Non-hazardous. No MSDS required.

## RESEARCH USE

For research use only, not for use in diagnostic procedures.