

# PRR19 (G-1): sc-390446



The Power to Question

## BACKGROUND

PRR19 (proline rich 19) is a 356 amino acid protein. Existing as two alternatively spliced isoforms, the PRR19 gene is conserved in chimpanzee, canine, bovine, mouse and rat, and maps to human chromosome 19q13.2. Consisting of around 63 million bases with over 1,400 genes, chromosome 19 makes up over 2% of human genomic DNA. Chromosome 19 includes a diversity of interesting genes and is recognized for having the greatest gene density of the human chromosomes. It is the genetic home for a number of immunoglobulin superfamily members including the killer cell and leukocyte Ig-like receptors, a number of ICAMs, the CEACAM and PSG family, and Fc $\alpha$  receptors. Key genes for eye color and hair color also map to chromosome 19. Peutz-Jeghers syndrome, spinocerebellar ataxia type 6, the stroke disorder CADASIL, hypercholesterolemia and Insulin-dependent diabetes have been linked to chromosome 19. Translocations with chromosome 19 and chromosome 14 can be seen in some lymphoproliferative disorders and typically involve the proto-oncogene BCL3.

## REFERENCES

1. Zimmermann, W., et al. 1988. Chromosomal localization of the carcinoembryonic antigen gene family and differential expression in various tumors. *Cancer Res.* 48: 2550-2554.
2. LaPoint, S.F., et al. 2000. Cerebral autosomal dominant arteriopathy with subcortical infarcts and leukoencephalopathy (CADASIL). *Adv. Anat. Pathol.* 7: 307-321.

## CHROMOSOMAL LOCATION

Genetic locus: PRR19 (human) mapping to 19q13.2; Prr19 (mouse) mapping to 7 A3.

## SOURCE

PRR19 (G-1) is a mouse monoclonal antibody specific for an epitope mapping between amino acids 65-80 within an internal region of PRR19 of human origin.

## PRODUCT

Each vial contains 200  $\mu$ g IgG $\kappa$  kappa light chain in 1.0 ml of PBS with < 0.1% sodium azide and 0.1% gelatin.

PRR19 (G-1) is available conjugated to agarose (sc-390446 AC), 500  $\mu$ g/0.25 ml agarose in 1 ml, for IP; to HRP (sc-390446 HRP), 200  $\mu$ g/ml, for WB, IHC(P) and ELISA; to either phycoerythrin (sc-390446 PE), fluorescein (sc-390446 FITC), Alexa Fluor<sup>®</sup> 488 (sc-390446 AF488), Alexa Fluor<sup>®</sup> 546 (sc-390446 AF546), Alexa Fluor<sup>®</sup> 594 (sc-390446 AF594) or Alexa Fluor<sup>®</sup> 647 (sc-390446 AF647), 200  $\mu$ g/ml, for WB (RGB), IF, IHC(P) and FCM; and to either Alexa Fluor<sup>®</sup> 680 (sc-390446 AF680) or Alexa Fluor<sup>®</sup> 790 (sc-390446 AF790), 200  $\mu$ g/ml, for Near-Infrared (NIR) WB, IF and FCM.

Blocking peptide available for competition studies, sc-390446 P, (100  $\mu$ g peptide in 0.5 ml PBS containing < 0.1% sodium azide and 0.2% stabilizer protein).

Alexa Fluor<sup>®</sup> is a trademark of Molecular Probes, Inc., Oregon, USA

## APPLICATIONS

PRR19 (G-1) is recommended for detection of PRR19 of mouse, rat and human origin by Western Blotting (starting dilution 1:100, dilution range 1:100-1:1000), immunoprecipitation [1-2  $\mu$ g per 100-500  $\mu$ g of total protein (1 ml of cell lysate)], immunofluorescence (starting dilution 1:50, dilution range 1:50-1:500), immunohistochemistry (including paraffin-embedded sections) (starting dilution 1:50, dilution range 1:50-1:500) and solid phase ELISA (starting dilution 1:30, dilution range 1:30-1:3000).

PRR19 (G-1) is also recommended for detection of PRR19 in additional species, including equine, canine and porcine.

Suitable for use as control antibody for PRR19 siRNA (h): sc-97213, PRR19 siRNA (m): sc-152511, PRR19 shRNA Plasmid (h): sc-97213-SH, PRR19 shRNA Plasmid (m): sc-152511-SH, PRR19 shRNA (h) Lentiviral Particles: sc-97213-V and PRR19 shRNA (m) Lentiviral Particles: sc-152511-V.

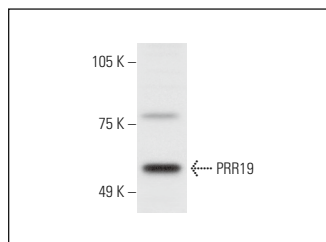
Molecular Weight of PRR19: 39 kDa.

Positive Controls: Hep G2 cell lysate: sc-2227.

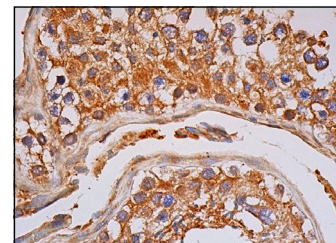
## RECOMMENDED SUPPORT REAGENTS

To ensure optimal results, the following support reagents are recommended: 1) Western Blotting: use m-IgG $\kappa$  BP-HRP: sc-516102 or m-IgG $\kappa$  BP-HRP (Cruz Marker): sc-516102-CM (dilution range: 1:1000-1:10000), Cruz Marker<sup>™</sup> Molecular Weight Standards: sc-2035, UltraCruz<sup>®</sup> Blocking Reagent: sc-516214 and Western Blotting Luminol Reagent: sc-2048. 2) Immunoprecipitation: use Protein A/G PLUS-Agarose: sc-2003 (0.5 ml agarose/2.0 ml). 3) Immunofluorescence: use m-IgG $\kappa$  BP-FITC: sc-516140 or m-IgG $\kappa$  BP-PE: sc-516141 (dilution range: 1:50-1:200) with UltraCruz<sup>®</sup> Mounting Medium: sc-24941 or UltraCruz<sup>®</sup> Hard-set Mounting Medium: sc-359850. 4) Immunohistochemistry: use m-IgG $\kappa$  BP-HRP: sc-516102 with DAB, 50X: sc-24982 and Immunohistomount: sc-45086, or Organo/Limonene Mount: sc-45087.

## DATA



PRR19 (G-1): sc-390446. Western blot analysis of PRR19 expression in Hep G2 whole cell lysate.



PRR19 (G-1): sc-390446. Immunoperoxidase staining of formalin fixed, paraffin-embedded human testis tissue showing cytoplasmic staining of cells in seminiferous ducts and Leydig cells.

## STORAGE

Store at 4° C, \*\*DO NOT FREEZE\*\*. Stable for one year from the date of shipment. Non-hazardous. No MSDS required.

## RESEARCH USE

For research use only, not for use in diagnostic procedures.