

PTF1 (F-6): sc-390519

BACKGROUND

PTF1, also known as PTF1A (pancreas specific transcription factor, 1A) or PTF1-p48, is a pancreas-specific protein that functions as a component of the trimeric pancreas transcription factor 1 (PTF1) complex. Localizing to the nucleus, PTF1 contains one basic helix-loop-helix (bHLH) domain and is believed to play an important role in mammalian pancreatic development, functioning as a transcription factor that regulates the specification of all three pancreatic cell types. PTF1 interacts with RBP-J κ and, together, they cooperate in regulating the expression of PDX-1 (pancreas/duodenum homeobox protein 1), a key regulator of pancreatic islet development and Insulin gene transcription in β -cells. Loss of functional PTF1 can cause pancreatic progenitors to take on the normal fates of duodenal epithelia. Mutations in the gene encoding PTF1 lead to diabetes mellitus and cerebellar hypoplasia/agenesis, suggesting that PTF1 also plays an important role in cerebellar neurogenesis.

REFERENCES

1. Krapp, A., Knöfler, M., Ledermann, B., Bürki, K., Berney, C., Zoerkler, N., Hagenbüchle, O. and Wellauer, P.K. 1998. The bHLH protein PTF1-p48 is essential for the formation of the exocrine and the correct spatial organization of the endocrine pancreas. *Genes Dev.* 12: 3752-3763.
2. Kawaguchi, Y., Cooper, B., Gannon, M., Ray, M., MacDonald, R.J. and Wright, C.V. 2002. The role of the transcriptional regulator Ptf1a in converting intestinal to pancreatic progenitors. *Nat. Genet.* 32: 128-134.
3. Online Mendelian Inheritance in Man, OMIM™. 2002. Johns Hopkins University, Baltimore, MD. MIM Number: 607194. World Wide Web URL: <http://www.ncbi.nlm.nih.gov/omim/>
4. Miyatsuka, T., Matsuoka, T.A., Shiraiwa, T., Yamamoto, T., Kojima, I. and Kaneto, H. 2007. Ptf1a and RBP-J cooperate in activating Pdx1 gene expression through binding to Area III. *Biochem. Biophys. Res. Commun.* 362: 905-909.
5. Masui, T., Long, Q., Beres, T.M., Magnuson, M.A. and MacDonald, R.J. 2007. Early pancreatic development requires the vertebrate Suppressor of Hairless (RBPJ) in the PTF1 bHLH complex. *Genes Dev.* 21: 2629-2643.

CHROMOSOMAL LOCATION

Genetic locus: PTF1A (human) mapping to 10p12.2; Ptf1a (mouse) mapping to 2 A3.

SOURCE

PTF1 (F-6) is a mouse monoclonal antibody specific for an epitope mapping between amino acids 257-283 of PTF1 of human origin.

PRODUCT

Each vial contains 200 μ g IgG κ light chain in 1.0 ml of PBS with < 0.1% sodium azide and 0.1% gelatin. Also available as TransCruz reagent for Gel Supershift and ChIP applications, sc-390519 X, 200 μ g/0.1 ml.

Blocking peptide available for competition studies, sc-390519 P, (100 μ g peptide in 0.5 ml PBS containing < 0.1% sodium azide and 0.2% stabilizer protein).

APPLICATIONS

PTF1 (F-6) is recommended for detection of PTF1 of mouse, rat and human origin by Western Blotting (starting dilution 1:100, dilution range 1:100-1:1000), immunoprecipitation [1-2 μ g per 100-500 μ g of total protein (1 ml of cell lysate)], immunofluorescence (starting dilution 1:50, dilution range 1:50-1:500) and solid phase ELISA (starting dilution 1:30, dilution range 1:30-1:3000).

PTF1 (F-6) is also recommended for detection of PTF1 in additional species, including bovine and porcine.

Suitable for use as control antibody for PTF1 siRNA (h): sc-76285, PTF1 siRNA (m): sc-76286, PTF1 shRNA Plasmid (h): sc-76285-SH, PTF1 shRNA Plasmid (m): sc-76286-SH, PTF1 shRNA (h) Lentiviral Particles: sc-76285-V and PTF1 shRNA (m) Lentiviral Particles: sc-76286-V.

PTF1 (F-6) X TransCruz antibody is recommended for Gel Supershift and ChIP applications.

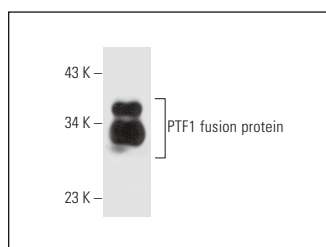
Molecular Weight of PTF1: 42 kDa.

Positive Controls: MIA PaCa-2 cell lysate: sc-2285.

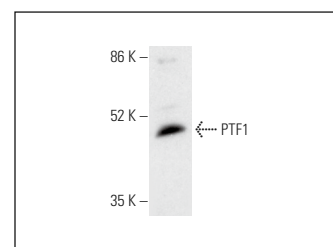
RECOMMENDED SUPPORT REAGENTS

To ensure optimal results, the following support reagents are recommended: 1) Western Blotting: use m-IgG κ BP-HRP: sc-516102 or m-IgG κ BP-HRP (Cruz Marker): sc-516102-CM (dilution range: 1:1000-1:10000), Cruz Marker™ Molecular Weight Standards: sc-2035, UltraCruz® Blocking Reagent: sc-516214 and Western Blotting Luminol Reagent: sc-2048. 2) Immunoprecipitation: use Protein A/G PLUS-Agarose: sc-2003 (0.5 ml agarose/2.0 ml). 3) Immunofluorescence: use m-IgG κ BP-FITC: sc-516140 or m-IgG κ BP-PE: sc-516141 (dilution range: 1:50-1:200) with UltraCruz® Mounting Medium: sc-24941 or UltraCruz® Hard-set Mounting Medium: sc-359850.

DATA



PTF1 (F-6): sc-390519. Western blot analysis of human recombinant PTF1 fusion protein.



PTF1 (F-6): sc-390519. Western blot analysis of PTF1 expression in MIA PaCa-2 whole cell lysate.

STORAGE

Store at 4° C, **DO NOT FREEZE**. Stable for one year from the date of shipment. Non-hazardous. No MSDS required.

RESEARCH USE

For research use only, not for use in diagnostic procedures.