

Cbl-3 (G-6): sc-390649

BACKGROUND

Cbl (also designated the c-Cbl proto-oncogene, E3 ubiquitin-protein ligase CBL, Casitas B-lineage lymphoma proto-oncogene, and RING finger protein 55) has been identified as the cellular homolog of the v-Cbl oncogene isolated from an NFS/N mouse that developed a pre-B cell lymphoma following infection with the replication-competent Cas Br-M murine leukemic virus. c-Cbl is expressed at relatively high levels in a wide range of hematopoietic tumor cell lines as well as in normal tissues such as thymus and testis. The c-Cbl gene product has been identified as a cytoplasmic protein with apparent DNA binding and dimerization domains characteristic of transcription factors. A single c-Cbl locus termed CBL2 has been mapped to human chromosome 11q23. This region of chromosome 11 is involved in translocations and deletions in a broad range of leukemias; c-Cbl has been found to be translocated from chromosome 11 in leukemias with either t(4;11) or t(11;14) abnormalities. Two proteins related to c-Cbl have been identified as Cbl-b (RING finger protein 56) and Cbl-3 (RING finger protein 57). Cbl-b has a proline-rich domain, a nuclear localization signal, a C3HC4 zinc finger and a putative leucine zipper. Cbl-b is expressed in normal and malignant mammary epithelial cells, various normal tissues and hematopoietic tissue and cell lines. Data suggests that Cbl-b encodes a protein that can interact with signal transduction proteins to regulate their function or be regulated by them.

REFERENCES

- Langdon, W.Y., et al. 1989. v-Cbl, an oncogene from a dual-recombinant murine retrovirus that induces early B-lineage lymphomas. *Proc. Natl. Acad. Sci. USA* 86: 1168-1172.
- Regnier, D.C., et al. 1989. Identification of two murine loci homologous to the v-Cbl oncogene. *J. Virol.* 63: 3678-3682.
- Langdon, W.Y., et al. 1989. The c-Cbl proto-oncogene is preferentially expressed in thymus and testis tissue and encodes a nuclear protein. *J. Virol.* 63: 5420-5424.
- Blake, T.J., et al. 1991. The sequences of the human and mouse c-Cbl proto-oncogenes show v-Cbl was generated by a large truncation encompassing a proline-rich domain and a leucine zipper-like motif. *Oncogene* 6: 653-657.

CHROMOSOMAL LOCATION

Genetic locus: CBLC (human) mapping to 19q13.32.

SOURCE

Cbl-3 (G-6) is a mouse monoclonal antibody specific for an epitope mapping between amino acids 438-474 of Cbl-3 of human origin.

PRODUCT

Each vial contains 200 µg IgG₁ kappa light chain in 1.0 ml of PBS with < 0.1% sodium azide and 0.1% gelatin.

Blocking peptide available for competition studies, sc-390649 P, (100 µg peptide in 0.5 ml PBS containing < 0.1% sodium azide and 0.2% stabilizer protein).

APPLICATIONS

Cbl-3 (G-6) is recommended for detection of Cbl-3 of human origin by Western Blotting (starting dilution 1:100, dilution range 1:100-1:1000), immunoprecipitation [1-2 µg per 100-500 µg of total protein (1 ml of cell lysate)], immunofluorescence (starting dilution 1:50, dilution range 1:50-1:500) and solid phase ELISA (starting dilution 1:30, dilution range 1:30-1:3000).

Suitable for use as control antibody for Cbl-3 siRNA (h): sc-40390, Cbl-3 shRNA Plasmid (h): sc-40390-SH and Cbl-3 shRNA (h) Lentiviral Particles: sc-40390-V.

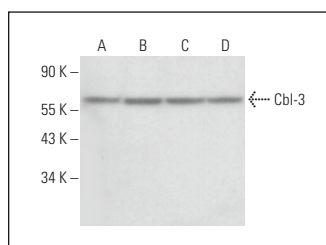
Molecular Weight of Cbl-3: 52 kDa.

Positive Controls: Cbl-3 (h3): 293T Lysate: sc-176341, A2058 whole cell lysate: sc-364178 or HeLa whole cell lysate: sc-2200.

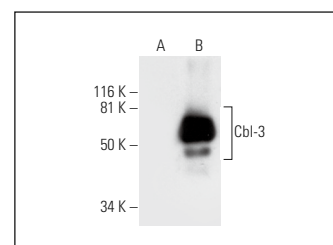
RECOMMENDED SUPPORT REAGENTS

To ensure optimal results, the following support reagents are recommended: 1) Western Blotting: use m-IgGκ BP-HRP: sc-516102 or m-IgGκ BP-HRP (Cruz Marker): sc-516102-CM (dilution range: 1:1000-1:10000), Cruz Marker™ Molecular Weight Standards: sc-2035, UltraCruz® Blocking Reagent: sc-516214 and Western Blotting Luminol Reagent: sc-2048. 2) Immunoprecipitation: use Protein A/G PLUS-Agarose: sc-2003 (0.5 ml agarose/2.0 ml). 3) Immunofluorescence: use m-IgGκ BP-FITC: sc-516140 or m-IgGκ BP-PE: sc-516141 (dilution range: 1:50-1:200) with UltraCruz® Mounting Medium: sc-24941 or UltraCruz® Hard-set Mounting Medium: sc-359850.

DATA



Cbl-3 (G-6): sc-390649. Western blot analysis of Cbl-3 expression in A2058 (A), SK-MEL-24 (B), MIA PaCa-2 (C) and HeLa (D) whole cell lysates.



Cbl-3 (G-6): sc-390649. Western blot analysis of Cbl-3 expression in non-transfected: sc-117752 (A) and human Cbl-3 transfected: sc-176341 (B) 293T whole cell lysates.

STORAGE

Store at 4° C, **DO NOT FREEZE**. Stable for one year from the date of shipment. Non-hazardous. No MSDS required.

RESEARCH USE

For research use only, not for use in diagnostic procedures.

PROTOCOLS

See our web site at www.scbt.com for detailed protocols and support products.