

TFIP11 (D-4): sc-390703



The Power to Question

BACKGROUND

TFIP11 (tuftelin-interacting protein 11), also known as NTR1, TIP39, STIP or hNtr1, is an 837 amino acid protein that belongs to the TFP11/STIP family. TFIP11 localizes to the nucleus as well as the cytoplasm and contains one G-patch domain, which is suggested to be a highly conserved domain of many RNA-processing proteins. Considered a novel splicing factor, TFIP11 may be involved in spliceosome disassembly and may act as a subnuclear storage compartment for splicing components. As a possible enamel protein, TFIP11 is thought to play a role in the differentiation of ameloblasts and odontoblasts or in the formation of the enamel extracellular matrix. Two isoforms of TFIP11 exists due to alternative splicing events.

REFERENCES

- Usdin, T.B., et al. 2000. New members of the parathyroid hormone/parathyroid hormone receptor family: the parathyroid hormone 2 receptor and tuberoinsulin peptide of 39 residues. *Front. Neuroendocrinol.* 21: 349-383.
- Paine, C.T., et al. 2000. A tuftelin-interacting protein (TIP39) localizes to the apical secretory pole of mouse ameloblasts. *J. Biol. Chem.* 275: 22284-22292.
- Usdin, T.B., et al. 2002. The parathyroid hormone 2 (PTH2) receptor. *Recept. Channels* 8: 211-218.
- Wen, X., et al. 2005. Structural organization and cellular localization of tuftelin-interacting protein 11 (TFIP11). *Cell. Mol. Life Sci.* 62: 1038-1046.
- Wang, H.J., et al. 2006. Using the yeast two-hybrid assay to discover protein partners for the leucine-rich amelogenin peptide and for tuftelin-interacting protein 11. *Eur. J. Oral Sci.* 114: 276-279.
- Herrmann, G., et al. 2007. Conserved interactions of the splicing factor Ntr1/Spp382 with proteins involved in DNA double-strand break repair and telomere metabolism. *Nucleic Acids Res.* 35: 2321-2332.
- Patir, A., et al. 2008. Enamel formation genes are associated with high caries experience in Turkish children. *Caries Res.* 42: 394-400.
- Tannukit, S., et al. 2008. TFIP11, CCNL1 and EWSR1 protein-protein interactions, and their nuclear localization. *Int. J. Mol. Sci.* 9: 1504-1514.
- Wen, X., et al. 2008. TFIP11 interacts with mDEAH9, an RNA helicase involved in spliceosome disassembly. *Int. J. Mol. Sci.* 9: 2105-2113.

CHROMOSOMAL LOCATION

Genetic locus: TFIP11 (human) mapping to 22q12.1; Tfp11 (mouse) mapping to 5 F.

SOURCE

TFIP11 (D-4) is a mouse monoclonal antibody raised against amino acids 538-837 mapping at the C-terminus of TFIP11 of human origin.

PRODUCT

Each vial contains 200 µg IgG_{2a} kappa light chain in 1.0 ml of PBS with < 0.1% sodium azide and 0.1% gelatin.

APPLICATIONS

TFIP11 (D-4) is recommended for detection of TFIP11 of mouse, rat and human origin by Western Blotting (starting dilution 1:100, dilution range 1:100-1:1000), immunoprecipitation [1-2 µg per 100-500 µg of total protein (1 ml of cell lysate)], immunofluorescence (starting dilution 1:50, dilution range 1:50-1:500) and solid phase ELISA (starting dilution 1:30, dilution range 1:30-1:3000).

TFIP11 (D-4) is also recommended for detection of TFIP11 in additional species, including equine, canine and porcine.

Suitable for use as control antibody for TFIP11 siRNA (h): sc-76671, TFIP11 siRNA (m): sc-154236, TFIP11 shRNA Plasmid (h): sc-76671-SH, TFIP11 shRNA Plasmid (m): sc-154236-SH, TFIP11 shRNA (h) Lentiviral Particles: sc-76671-V and TFIP11 shRNA (m) Lentiviral Particles: sc-154236-V.

Molecular Weight of TFIP11: 97 kDa.

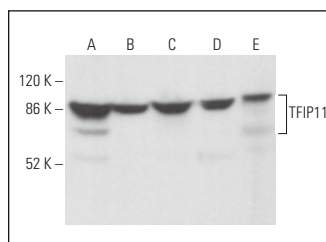
Positive Controls: K-562 whole cell lysate: sc-2203, MCF7 whole cell lysate: sc-2206 or HeLa whole cell lysate: sc-2200.

RECOMMENDED SUPPORT REAGENTS

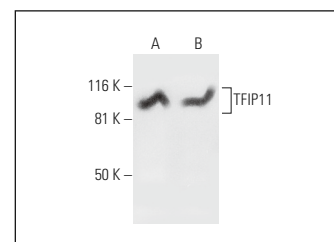
To ensure optimal results, the following support reagents are recommended:

- 1) Western Blotting: use m-IgGκ BP-HRP: sc-516102 or m-IgGκ BP-HRP (Cruz Marker): sc-516102-CM (dilution range: 1:1000-1:10000), Cruz Marker™ Molecular Weight Standards: sc-2035, UltraCruz® Blocking Reagent: sc-516214 and Western Blotting Luminol Reagent: sc-2048.
- 2) Immunoprecipitation: use Protein A/G PLUS-Agarose: sc-2003 (0.5 ml agarose/2.0 ml).
- 3) Immunofluorescence: use m-IgGκ BP-FITC: sc-516140 or m-IgGκ BP-PE: sc-516141 (dilution range: 1:50-1:200) with UltraCruz® Mounting Medium: sc-24941 or UltraCruz® Hard-set Mounting Medium: sc-359850.

DATA



TFIP11 (D-4): sc-390703. Western blot analysis of TFIP11 expression in K-562 (A), MCF7 (B), Hep G2 (C) and TK-1 (D) whole cell lysates and rat testis tissue extract (E).



TFIP11 (D-4): sc-390703. Western blot analysis of TFIP11 expression in K-562 (A) and HeLa (B) whole cell lysates.

STORAGE

Store at 4° C, **DO NOT FREEZE**. Stable for one year from the date of shipment. Non-hazardous. No MSDS required.

RESEARCH USE

For research use only, not for use in diagnostic procedures.