

# TORC2 (D-2): sc-390765

## BACKGROUND

The TORC (transducer of regulated cAMP response element-binding) proteins, TORC1 and TORC2, are potent CREB coactivators that are exported from the nucleus in a CRM1-dependent manner. The translocation of TORC proteins is a conserved step in the activation of CRE-mediated gene expression induced by cAMP. TORC1 and TORC2 operate via phosphorylation-dependent interactions.

## REFERENCES

1. Conkright, M.D., Canettieri, G., Screaton, R., Guzman, E., Miraglia, L., Hogenesch, J.B. and Montminy, M. 2003. TORCs: transducers of regulated CREB activity. *Mol. Cell* 12: 413-423.
2. Iourgenko, V., Zhang, W., Mickanin, C., Daly, I., Jiang, C., Hexham, J.M., Orth, A.P., Miraglia, L., Meltzer, J., Garza, D., Chirn, G.W., McWhinnie, E., Cohen, D., Skelton, J., Terry, R., Yu, Y., Bodian, D., Buxton, F.P., et al. 2003. Identification of a family of cAMP response element-binding protein coactivators by genome-scale functional analysis in mammalian cells. *Proc. Natl. Acad. Sci. USA* 100: 12147-12152.
3. Bittinger, M.A., McWhinnie, E., Meltzer, J., Iourgenko, V., Latario, B., Liu, X., Chen, C.H., Song, C., Garza, D. and Labow, M. 2004. Activation of cAMP response element-mediated gene expression by regulated nuclear transport of TORC proteins. *Curr. Biol.* 14: 2156-2161.
4. Screaton, R.A., Conkright, M.D., Katoh, Y., Best, J.L., Canettieri, G., Jeffries, S., Guzman, E., Niessen, S., Yates, J.R., 3rd., Takemori, H., Okamoto, M. and Montminy, M. 2004. The CREB coactivator TORC2 functions as a calcium- and cAMP-sensitive coincidence detector. *Cell* 119: 61-74.
5. Behboudi, A., Winnes, M., Gorunova, L., van den Oord, J.J., Mertens, F., Enlund, F. and Stenman, G. 2005. Clear cell hidradenoma of the skin—a third tumor type with a t(11;19) associated TORC1-MAML2 gene fusion. *Genes Chromosomes Cancer* 43: 202-205.

## CHROMOSOMAL LOCATION

Genetic locus: CRTC2 (human) mapping to 1q21.3; Crtc2 (mouse) mapping to 3 F1.

## SOURCE

TORC2 (D-2) is a mouse monoclonal antibody specific for an epitope mapping between amino acids 102-127 of TORC2 of human origin.

## PRODUCT

Each vial contains 200 µg IgG<sub>2b</sub> in 1.0 ml of PBS with < 0.1% sodium azide and 0.1% gelatin. Available as TransCruz reagent for Gel Supershift and ChIP applications, sc-390765 X, 200 µg/0.1 ml.

Blocking peptide available for competition studies, sc-390765 P, (100 µg peptide in 0.5 ml PBS containing < 0.1% sodium azide and 0.2% stabilizer protein).

## RESEARCH USE

For research use only, not for use in diagnostic procedures.

## APPLICATIONS

TORC2 (D-2) is recommended for detection of TORC2 of mouse, rat and human origin by Western Blotting (starting dilution 1:100, dilution range 1:100-1:1000), immunoprecipitation [1-2 µg per 100-500 µg of total protein (1 ml of cell lysate)], immunofluorescence (starting dilution 1:50, dilution range 1:50-1:500) and solid phase ELISA (starting dilution 1:30, dilution range 1:30-1:3000).

TORC2 (D-2) is also recommended for detection of TORC2 in additional species, including equine, canine, bovine and porcine.

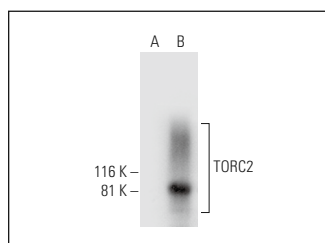
Suitable for use as control antibody for TORC2 siRNA (h): sc-45832, TORC2 siRNA (m): sc-45833, TORC2 shRNA Plasmid (h): sc-45832-SH, TORC2 shRNA Plasmid (m): sc-45833-SH, TORC2 shRNA (h) Lentiviral Particles: sc-45832-V and TORC2 shRNA (m) Lentiviral Particles: sc-45833-V.

TORC2 (D-2) X TransCruz antibody is recommended for Gel Supershift and ChIP applications.

Molecular Weight of TORC2: 87 kDa.

Positive Controls: TORC2 (h): 293T Lysate: sc-116557.

## DATA



TORC2 (D-2): sc-390765. Western blot analysis of TORC2 expression in non-transfected: sc-117752 (A) and human TORC2 transfected: sc-116557 (B) 293T whole cell lysates.

## STORAGE

Store at 4° C, \*\*DO NOT FREEZE\*\*. Stable for one year from the date of shipment. Non-hazardous. No MSDS required.

## PROTOCOLS

See our web site at [www.scbt.com](http://www.scbt.com) for detailed protocols and support products.