

syncollin (H-6): sc-390795

BACKGROUND

Syncollin (SYCN), also known as SYL, INSSA1 or Insulin synthesis-associated protein 1, is a 134 amino acid protein expressed in pancreatic acinar cells. Localizing to secretory vesicle membranes of cytoplasmic vesicles and the luminal side of peripheral membranes, syncollin plays a role in exocytosis and is thought to influence maturation or concentration of zymogens in zymogen granules. The gene encoding syncollin maps to human chromosome 19, which consists of over 63 million bases, houses approximately 1,400 genes and is recognized for having the greatest gene density of the human chromosomes. It is the genetic home for a number of immunoglobulin (Ig) superfamily members, including the killer cell and leukocyte Ig-like receptors, a number of ICAMs, the CEACAM and PSG family and Fc receptors (FcRs).

REFERENCES

1. Teglund, S., et al. 1994. The pregnancy-specific glycoprotein (PSG) gene cluster on human chromosome 19: fine structure of the 11 PSG genes and identification of 6 new genes forming a third subgroup within the carcinoembryonic antigen (CEA) family. *Genomics* 23: 669-684.
2. Wang, L., et al. 2000. C-CAM1, a candidate tumor suppressor gene, is abnormally expressed in primary lung cancers. *Clin. Cancer Res.* 6: 2988-2993.
3. Trowsdale, J., et al. 2001. The genomic context of natural killer receptor extended gene families. *Immunol. Rev.* 181: 20-38.
4. Antonin, W., et al. 2002. Loss of the zymogen granule protein syncollin affects pancreatic protein synthesis and transport but not secretion. *Mol. Cell. Biol.* 22: 1545-1554.

CHROMOSOMAL LOCATION

Genetic locus: SYCN (human) mapping to 19q13.2; Sycn (mouse) mapping to 7 A3.

SOURCE

syncollin (H-6) is a mouse monoclonal antibody raised against amino acids 1-134 representing full length syncollin of mouse origin.

PRODUCT

Each vial contains 200 µg IgG_{2a} kappa light chain in 1.0 ml of PBS with < 0.1% sodium azide and 0.1% gelatin.

syncollin (H-6) is available conjugated to agarose (sc-390795 AC), 500 µg/0.25 ml agarose in 1 ml, for IP; to HRP (sc-390795 HRP), 200 µg/ml, for WB, IHC(P) and ELISA; to either phycoerythrin (sc-390795 PE), fluorescein (sc-390795 FITC), Alexa Fluor® 488 (sc-390795 AF488), Alexa Fluor® 546 (sc-390795 AF546), Alexa Fluor® 594 (sc-390795 AF594) or Alexa Fluor® 647 (sc-390795 AF647), 200 µg/ml, for WB (RGB), IF, IHC(P) and FCM; and to either Alexa Fluor® 680 (sc-390795 AF680) or Alexa Fluor® 790 (sc-390795 AF790), 200 µg/ml, for Near-Infrared (NIR) WB, IF and FCM.

STORAGE

Store at 4° C, **DO NOT FREEZE**. Stable for one year from the date of shipment. Non-hazardous. No MSDS required.

APPLICATIONS

syncollin (H-6) is recommended for detection of syncollin of mouse, rat and human origin by Western Blotting (starting dilution 1:100, dilution range 1:100-1:1000), immunoprecipitation [1-2 µg per 100-500 µg of total protein (1 ml of cell lysate)], immunofluorescence (starting dilution 1:50, dilution range 1:50-1:500), immunohistochemistry (including paraffin-embedded sections) (starting dilution 1:50, dilution range 1:50-1:500) and solid phase ELISA (starting dilution 1:30, dilution range 1:30-1:3000).

Suitable for use as control antibody for syncollin siRNA (h): sc-97291, syncollin siRNA (m): sc-153985, syncollin shRNA Plasmid (h): sc-97291-SH, syncollin shRNA Plasmid (m): sc-153985-SH, syncollin shRNA (h) Lentiviral Particles: sc-97291-V and syncollin shRNA (m) Lentiviral Particles: sc-153985-V.

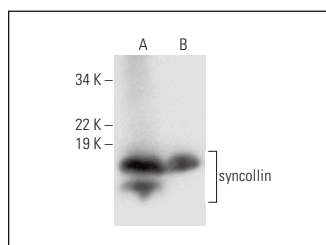
Molecular Weight of syncollin: 16 kDa.

Positive Controls: mouse pancreas extract: sc-sc-364244 or mouse spleen extract: sc-2391.

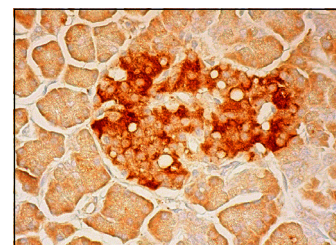
RECOMMENDED SUPPORT REAGENTS

To ensure optimal results, the following support reagents are recommended: 1) Western Blotting: use m-IgGκ BP-HRP: sc-516102 or m-IgGκ BP-HRP (Cruz Marker): sc-516102-CM (dilution range: 1:1000-1:10000), Cruz Marker™ Molecular Weight Standards: sc-2035, UltraCruz® Blocking Reagent: sc-516214 and Western Blotting Luminol Reagent: sc-2048. 2) Immunoprecipitation: use Protein A/G PLUS-Agarose: sc-2003 (0.5 ml agarose/2.0 ml). 3) Immunofluorescence: use m-IgGκ BP-FITC: sc-516140 or m-IgGκ BP-PE: sc-516141 (dilution range: 1:50-1:200) with UltraCruz® Mounting Medium: sc-24941 or UltraCruz® Hard-set Mounting Medium: sc-359850. 4) Immunohistochemistry: use m-IgGκ BP-HRP: sc-516102 with DAB, 50X: sc-24982 and Immunohistomount: sc-45086, or Organo/Limonene Mount: sc-45087.

DATA



syncollin (H-6): sc-390795. Western blot analysis of syncollin expression in mouse pancreas (A) and mouse spleen (B) tissue extracts.



syncollin (H-6): sc-390795. Immunoperoxidase staining of formalin fixed, paraffin-embedded human pancreas tissue showing cytoplasmic staining of exocrine glandular cells.

RESEARCH USE

For research use only, not for use in diagnostic procedures.

Alexa Fluor® is a trademark of Molecular Probes, Inc., Oregon, USA