

GID4 (B-6): sc-390887

BACKGROUND

Chromosome 17 makes up over 2.5% of the human genome with about 81 million bases encoding over 1,200 genes. Two key tumor suppressor genes are associated with chromosome 17, namely, p53 and BRCA1. Tumor suppressor p53 is necessary for maintenance of cellular genetic integrity by moderating cell fate through DNA repair versus cell death. Malfunction or loss of p53 expression is associated with malignant cell growth and Li-Fraumeni syndrome. Like p53, BRCA1 is directly involved in DNA repair, though specifically it is recognized as a genetic determinant of early onset breast cancer and predisposition to cancers of the ovary, colon, prostate gland and fallopian tubes. Chromosome 17 is also linked to neurofibromatosis, a condition characterized by neural and epidermal lesions, and dysregulated Schwann cell growth. Alexander disease, Birt-Hogg-Dube syndrome and Canavan disease are also associated with chromosome 17.

REFERENCES

1. Welsch, M.J., et al. 2005. Birt-Hogg-Dube Syndrome. *Int. J. Dermatol.* 44: 668-673.
2. Nusbaum, R., et al. 2006-2007. Susceptibility to breast cancer: hereditary syndromes and low penetrance genes. *Breast Dis.* 27: 21-50.
3. Al-Darbashi, O.Y., et al. 2007. Quantification of N-acetylaspartic acid in urine by LC-MS/MS for the diagnosis of Canavan disease. *J. Inherit. Metab. Dis.* 30: 612.
4. Dann, R.B., et al. 2007. Strategies for ovarian cancer prevention. *Obstet. Gynecol. Clin. North Am.* 34: 667-686.
5. Farrell, C.J. and Plotkin, S.R. 2007. Genetic causes of brain tumors: neurofibromatosis, tuberous sclerosis, von Hippel-Lindau, and other syndromes. *Neurol. Clin.* 25: 925-946.
6. Suela, J., et al. 2007. Neurofibromatosis 1, and Not TP53, seems to be the main target of chromosome 17 deletions in *de novo* acute myeloid leukemia. *J. Clin. Oncol.* 25: 1151-1152.
7. Tai, Y.C., et al. 2007. Breast cancer risk among male BRCA1 and BRCA2 mutation carriers. *J. Natl. Cancer Inst.* 99: 1811-1814.

CHROMOSOMAL LOCATION

Genetic locus: GID4 (human) mapping to 17p11.2; Gid4 (mouse) mapping to 11 B2.

SOURCE

GID4 (B-6) is a mouse monoclonal antibody specific for an epitope mapping between amino acids 277-293 near the C-terminus of GID4 of human origin.

PRODUCT

Each vial contains 200 µg IgG₃ kappa light chain in 1.0 ml of PBS with < 0.1% sodium azide and 0.1% gelatin.

Blocking peptide available for competition studies, sc-390887 P, (100 µg peptide in 0.5 ml PBS containing < 0.1% sodium azide and 0.2% stabilizer protein).

APPLICATIONS

GID4 (B-6) is recommended for detection of GID4 of mouse, rat and human origin by Western Blotting (starting dilution 1:100, dilution range 1:100-1:1000), immunoprecipitation [1-2 µg per 100-500 µg of total protein (1 ml of cell lysate)], immunofluorescence (starting dilution 1:50, dilution range 1:50-1:500), immunohistochemistry (including paraffin-embedded sections) (starting dilution 1:50, dilution range 1:50-1:500) and solid phase ELISA (starting dilution 1:30, dilution range 1:30-1:3000).

Suitable for use as control antibody for GID4 siRNA (h): sc-93740, GID4 siRNA (m): sc-140331, GID4 shRNA Plasmid (h): sc-93740-SH, GID4 shRNA Plasmid (m): sc-140331-SH, GID4 shRNA (h) Lentiviral Particles: sc-93740-V and GID4 shRNA (m) Lentiviral Particles: sc-140331-V.

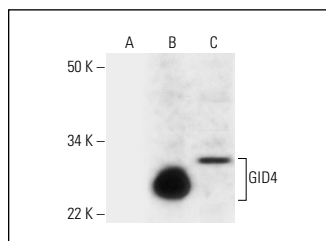
Molecular Weight of GID4: 34 kDa.

Positive Controls: GID4 (m): 293T Lysate: sc-124887 or Hep G2 cell lysate: sc-2227.

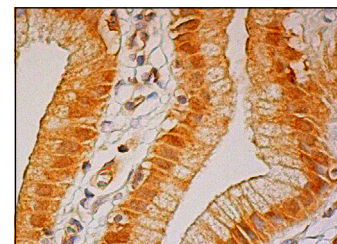
RECOMMENDED SUPPORT REAGENTS

To ensure optimal results, the following support reagents are recommended: 1) Western Blotting: use m-IgGκ BP-HRP: sc-516102 or m-IgGκ BP-HRP (Cruz Marker): sc-516102-CM (dilution range: 1:1000-1:10000), Cruz Marker™ Molecular Weight Standards: sc-2035, UltraCruz® Blocking Reagent: sc-516214 and Western Blotting Luminol Reagent: sc-2048. 2) Immunoprecipitation: use Protein A/G PLUS-Agarose: sc-2003 (0.5 ml agarose/2.0 ml). 3) Immunofluorescence: use m-IgGκ BP-FITC: sc-516140 or m-IgGκ BP-PE: sc-516141 (dilution range: 1:50-1:200) with UltraCruz® Mounting Medium: sc-24941 or UltraCruz® Hard-set Mounting Medium: sc-359850. 4) Immunohistochemistry: use m-IgGκ BP-HRP: sc-516102 with DAB, 50X: sc-24982 and Immunohistomount: sc-45086, or Organo/Limonene Mount: sc-45087.

DATA



GID4 (B-6): sc-390887. Western blot analysis of GID4 expression in non-transfected 293T: sc-117752 (A), mouse GID4 transfected 293T: sc-124887 (B) and Hep G2 (C) whole cell lysates.



GID4 (B-6): sc-390887. Immunoperoxidase staining of formalin fixed, paraffin-embedded human gall bladder tissue showing nuclear and cytoplasmic staining of glandular cells.

STORAGE

Store at 4° C, **DO NOT FREEZE**. Stable for one year from the date of shipment. Non-hazardous. No MSDS required.

RESEARCH USE

For research use only, not for use in diagnostic procedures.