

TEX13A (F-7): sc-390891

BACKGROUND

TEX13A (testis-expressed sequence 13A) is a 409 amino acid protein that is expressed specifically in the testis. One of two human orthologs of the mouse *Tex13* protein, TEX13A contains one RanBP2-type zinc finger domain; a motif that is thought to be involved in nucleocytoplasmic transport. Like its mouse counterpart, the gene encoding TEX13A is located on chromosome X, suggesting a possible role in the pre-meiotic stages of mammalian spermatogenesis. Translocations in the chromosomal region in which the TEX13A gene is located may be involved in the pathogenesis of azoospermia, a condition characterized by a complete absence of sperm in male semen. Chromosome X contains nearly 153 million base pairs and houses over 1,000 genes. In conjunction with chromosome Y, chromosome X is responsible for sex determination. There are a number of conditions related to an abnormal number and combination of sex chromosomes, some of which include Turner's syndrome, color blindness, hemophilia and Duchenne muscular dystrophy.

REFERENCES

1. Givens, J.R., et al. 1975. Features of Turner's syndrome in women with polycystic ovaries. *Obstet. Gynecol.* 45: 619-624.
2. Patzak, D., et al. 1999. Identification, mapping, and genomic structure of a novel X-chromosomal human gene (SMPX) encoding a small muscular protein. *Hum. Genet.* 105: 506-512.
3. Wang, P.J., et al. 2001. An abundance of X-linked genes expressed in spermatogonia. *Nat. Genet.* 27: 422-426.
4. Online Mendelian Inheritance in Man, OMIM™. 2002. Johns Hopkins University, Baltimore, MD. MIM Number: 300312. World Wide Web URL: <http://www.ncbi.nlm.nih.gov/omim/>

CHROMOSOMAL LOCATION

Genetic locus: *Tex13a* (mouse) mapping to X F1.

SOURCE

TEX13A (F-7) is a mouse monoclonal antibody specific for an epitope mapping between amino acids 278-313 within an internal region of TEX13A of mouse origin.

PRODUCT

Each vial contains 200 µg IgG_{2b} kappa light chain in 1.0 ml of PBS with < 0.1% sodium azide and 0.1% gelatin.

TEX13A (F-7) is available conjugated to agarose (sc-390891 AC), 500 µg/0.25 ml agarose in 1 ml, for IP; to HRP (sc-390891 HRP), 200 µg/ml, for WB, IHC(P) and ELISA; to either phycoerythrin (sc-390891 PE), fluorescein (sc-390891 FITC), Alexa Fluor® 488 (sc-390891 AF488), Alexa Fluor® 546 (sc-390891 AF546), Alexa Fluor® 594 (sc-390891 AF594) or Alexa Fluor® 647 (sc-390891 AF647), 200 µg/ml, for WB (RGB), IF, IHC(P) and FCM; and to either Alexa Fluor® 680 (sc-390891 AF680) or Alexa Fluor® 790 (sc-390891 AF790), 200 µg/ml, for Near-Infrared (NIR) WB, IF and FCM.

Blocking peptide available for competition studies, sc-390891 P, (100 µg peptide in 0.5 ml PBS containing < 0.1% sodium azide and 0.2% stabilizer protein).

APPLICATIONS

TEX13A (F-7) is recommended for detection of TEX13A of mouse and rat origin by Western Blotting (starting dilution 1:100, dilution range 1:100-1:1000), immunoprecipitation [1-2 µg per 100-500 µg of total protein (1 ml of cell lysate)], immunofluorescence (starting dilution 1:50, dilution range 1:50-1:500) and solid phase ELISA (starting dilution 1:30, dilution range 1:30-1:3000).

Suitable for use as control antibody for TEX13A siRNA (m): sc-154212, TEX13A shRNA Plasmid (m): sc-154212-SH and TEX13A shRNA (m) Lentiviral Particles: sc-154212-V.

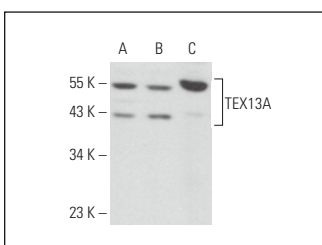
Molecular Weight of TEX13A: 46 kDa.

Positive Controls: Neuro-2A whole cell lysate: sc-364185, F9 cell lysate: sc-2245 or mouse testis extract: sc-2405.

RECOMMENDED SUPPORT REAGENTS

To ensure optimal results, the following support reagents are recommended: 1) Western Blotting: use m-IgGκ BP-HRP: sc-516102 or m-IgGκ BP-HRP (Cruz Marker): sc-516102-CM (dilution range: 1:1000-1:10000), Cruz Marker™ Molecular Weight Standards: sc-2035, UltraCruz® Blocking Reagent: sc-516214 and Western Blotting Luminol Reagent: sc-2048. 2) Immunoprecipitation: use Protein A/G PLUS-Agarose: sc-2003 (0.5 ml agarose/2.0 ml). 3) Immunofluorescence: use m-IgGκ BP-FITC: sc-516140 or m-IgGκ BP-PE: sc-516141 (dilution range: 1:50-1:200) with UltraCruz® Mounting Medium: sc-24941 or UltraCruz® Hard-set Mounting Medium: sc-359850.

DATA



TEX13A (F-7): sc-390891. Western blot analysis of TEX13A expression in Neuro-2A (A) and F9 (B) whole cell lysates and mouse testis tissue extract (C).

STORAGE

Store at 4° C, **DO NOT FREEZE**. Stable for one year from the date of shipment. Non-hazardous. No MSDS required.

RESEARCH USE

For research use only, not for use in diagnostic procedures.

PROTOCOLS

See our web site at www.scbt.com for detailed protocols and support products.

Alexa Fluor® is a trademark of Molecular Probes, Inc., Oregon, USA