

FAM110A (F-4): sc-390894

BACKGROUND

FAM110A (family with sequence similarity 110, member A) is a 295 amino acid protein that localizes to the cytoplasm, the cytoskeleton and the centrosome. Specifically, it colocalizes with microtubules during interphase and at spindle poles in mitosis. Expressed in thyroid, lymph node, trachea, adrenal gland, bone marrow, spleen, thymus, prostate, and peripheral blood leukocyte, FAM110A is thought to interact with CSPP and play a role in proper cell cycle progression. FAM110A expression is increased during S phase and G₂/M phase. The gene encoding FAM110A maps to human chromosome 20, which houses over 60 genes and comprises approximately 2% of the human genome. Chromosome 20 contains a region with numerous genes expressed in the epididymis which are thought important for seminal production and some viewed as potential targets for male contraception.

REFERENCES

1. Prusiner, S.B. 1998. The prion diseases. *Brain Pathol.* 8: 499-513.
2. Collins, S., et al. 2001. Gerstmann-Sträussler-Scheinker syndrome, fatal familial insomnia and kuru: a review of these less common human transmissible spongiform encephalopathies. *J. Clin. Neurosci.* 8: 387-397.
3. Masullo, C., et al. 2001. Does PRNP gene control the clinical and pathological phenotype of human spongiform transmissible encephalopathies? *Clin. Neuropathol.* 20: 19-25.
4. Joó, J.G., et al. 2006. Trisomy 20 mosaicism and nonmosaic trisomy 20: a report of 2 cases. *J. Reprod. Med.* 51: 209-212.
5. Ville, D., et al. 2006. Early pattern of epilepsy in the ring chromosome 20 syndrome. *Epilepsia* 47: 543-549.
6. Elghezal, H., et al. 2007. Ring chromosome 20 syndrome without deletions of the subtelomeric and CHRNA4-KCNQ2 genes loci. *Eur. J. Med. Genet.* 50: 441-445.
7. Kazantsev, A.G. 2007. Cellular pathways leading to neuronal dysfunction and degeneration. *Drug News Perspect.* 20: 501-509.
8. Lundwall, A. 2007. A locus on chromosome 20 encompassing genes that are highly expressed in the epididymis. *Asian J. Androl.* 9: 540-544.
9. O'Rand, M.G., et al. 2007. Eppin: an epididymal protease inhibitor and a target for male contraception. *Soc. Reprod. Fertil. Suppl.* 63: 445-453.

CHROMOSOMAL LOCATION

Genetic locus: FAM110A (human) mapping to 20p13; Fam110a (mouse) mapping to 2 G3.

SOURCE

FAM110A (F-4) is a mouse monoclonal antibody specific for an epitope mapping between amino acids 30-87 near the N-terminus of FAM110A of human origin.

STORAGE

Store at 4° C, **DO NOT FREEZE**. Stable for one year from the date of shipment. Non-hazardous. No MSDS required.

PRODUCT

Each vial contains 200 µg IgG₁ in 1.0 ml of PBS with < 0.1% sodium azide and 0.1% gelatin.

Blocking peptide available for competition studies, sc-390894 P, (100 µg peptide in 0.5 ml PBS containing < 0.1% sodium azide and 0.2% stabilizer protein).

APPLICATIONS

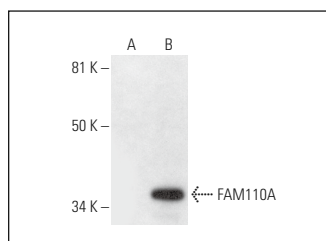
FAM110A (F-4) is recommended for detection of FAM110A of mouse, rat and human origin by Western Blotting (starting dilution 1:100, dilution range 1:100-1:1000), immunoprecipitation [1-2 µg per 100-500 µg of total protein (1 ml of cell lysate)], immunofluorescence (starting dilution 1:50, dilution range 1:50-1:500) and solid phase ELISA (starting dilution 1:30, dilution range 1:30-1:3000).

Suitable for use as control antibody for FAM110A siRNA (h): sc-77297, FAM110A siRNA (m): sc-77298, FAM110A shRNA Plasmid (h): sc-77297-SH, FAM110A shRNA Plasmid (m): sc-77298-SH, FAM110A shRNA (h) Lentiviral Particles: sc-77297-V and FAM110A shRNA (m) Lentiviral Particles: sc-77298-V.

Molecular Weight of FAM110A: 31 kDa.

Positive Controls: FAM110A (m4): 293T Lysate: sc-126828.

DATA



FAM110A (F-4): sc-390894. Western blot analysis of FAM110A expression in non-transfected: sc-117752 (A) and mouse FAM110A transfected: sc-126828 (B) 293T whole cell lysates.

SELECT PRODUCT CITATIONS

1. Aquino Perez, C., et al. 2021. CK1-mediated phosphorylation of FAM110A promotes its interaction with mitotic spindle and controls chromosomal alignment. *EMBO Rep.* 22: e51847.

RESEARCH USE

For research use only, not for use in diagnostic procedures.

PROTOCOLS

See our web site at www.scbt.com for detailed protocols and support products.