

mouse anti-rabbit IgG-TR: sc-3917

BACKGROUND

Santa Cruz Biotechnology's high quality, well characterized monoclonal secondary antibodies are available conjugated to either an enzyme, biotin or fluorophore for use in a variety of antibody-based applications, including Western blotting, immunostaining and flow cytometry. Santa Cruz secondary antibodies are commonly affinity purified against immobilized whole IgG isotypes, including IgG₁, IgG_{2a}, IgG_{2b}, IgG₃ and IgG₄. Monoclonal secondary antibodies are available conjugated to HRP for Western blotting (WB) and immunohistochemistry (IHC); (CM) or Cruz Marker form of HRP conjugated secondary antibodies are suitable for use with our Cruz Marker™ molecular weight standards; FITC (fluorescein isothiocyanate), PE (phycoerythrin), R (TRITC: tetramethyl rhodamine isothiocyanate), TR (Texas Red®), PerCP (peridinin chlorophyll protein complex), PerCP-Cy5.5 (peridinin chlorophyll protein complex with cyanin-5.5), and CruzFluor™ (488, 555 and 594) for immunofluorescence (IF), immunohistochemistry (IHC) and flow cytometry (FCM); B (biotin) for immunohistochemistry (IHC); AP (alkaline phosphatase) for Western blotting (WB); and CruzFluor® 680 and 790 for near-infrared (NIR) Western blotting (WB), immunofluorescence (IF), immunohistochemistry (IHC) and flow cytometry (FCM).

SOURCE

mouse anti-rabbit IgG-TR is a pre-adsorbed, affinity purified secondary antibody raised in mouse against rabbit IgG and conjugated to Texas Red®.

PRODUCT

Each vial contains 200 µg mouse IgG in 0.5 ml of PBS containing 1% stabilizer protein and 0.02% sodium azide.

APPLICATIONS

mouse anti-rabbit IgG-TR is recommended for detection of rabbit IgG by immunofluorescence staining (starting dilution: 1:100, dilution range: 1:100-1:400), immunohistochemical staining (starting dilution: 1:100, dilution range: 1:100-1:400) and flow cytometry (0.5-1 µg per 1 x 10⁶ cells). Optimal dilution to be determined by titration.

RECOMMENDED SUPPORT PRODUCTS

- CrystalCruz® Cover Glasses, 22 x 50 mm, precleaned: sc-24975
- PBS (Phosphate Buffered Saline), powder, 1 packet: sc-24947
- Formaldehyde, 37% formaldehyde solution, 25 ml: sc-203049
- Hydrogen Peroxide, 30% solution, 100 ml: sc-203336
- Organo/Limonene Mount, non-toxic alternative to Permount, 100 ml: sc-45087
- UltraCruz® Mounting Medium, aqueous-based, 10 ml: sc-24941
- ImmunoHistoMount, aqueous-based mounting medium, 30 ml: sc-45086
- Immuno In Situ Mount, for use with *in situ* hybridization, 30 ml: sc-45088
- Paraffin, for the preparation of tissue samples for staining, 500 g: sc-286633
- Xylenes, mixed isomers with ethylbenzene, 500 ml: sc-237422
- Hematoxylin, Gill's Formulation #2; nuclear counter stain, 100 ml: sc-24973

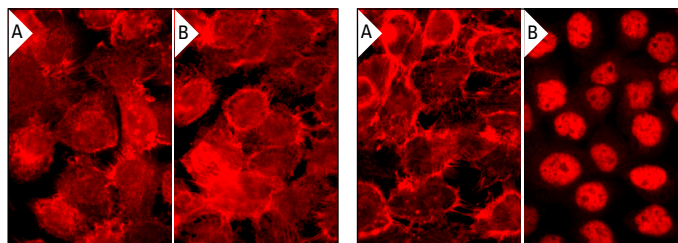
RESEARCH USE

For research use only, not for use in diagnostic procedures.

STORAGE

Store at 4° C, **DO NOT FREEZE**. Stable for one year from the date of shipment. Non-hazardous. No MSDS required.

DATA



MCF2L2 (N-14): sc-103037. Immunofluorescence staining of formalin-fixed A-431 cells showing membrane localization (A). C3orf39 (N-17): sc-99803. Immunofluorescence staining of formalin-fixed A-431 cells showing membrane localization (B). Detection reagent used: mouse anti-rabbit IgG-TR: sc-3917.

TDE2L (E-18): sc-138678. Immunofluorescence staining of formalin-fixed A-431 cells showing membrane localization (A). Ac-Histone H4 (Lys 8)-R: sc-8660-R. Immunofluorescence staining of formalin-fixed A-431 cells showing nuclear localization (B). Detection reagent used: mouse anti-rabbit IgG-TR: sc-3917.

SELECT PRODUCT CITATIONS

- Shi, H., et al. 2012. Real-time monitoring of cell apoptosis and drug screening using fluorescent light-up probe with aggregation-induced emission characteristics. *J. Am. Chem. Soc.* 134: 17972-17981.
- Xu, J., et al. 2013. Dietary GD3 ganglioside reduces the incidence and severity of necrotizing enterocolitis by sustaining regulatory immune responses. *J. Pediatr. Gastroenterol. Nutr.* 57: 550-556.
- Yuan, Y., et al. 2014. Targeted theranostic platinum(IV) prodrug with a built-in aggregation-induced emission light-up apoptosis sensor for non-invasive early evaluation of its therapeutic responses *in situ*. *J. Am. Chem. Soc.* 136: 2546-2554.
- Rakocevic, J., et al. 2015. Co-expression of vascular and lymphatic endothelial cell markers on early endothelial cells present in aspirated coronary thrombi from patients with ST-elevation myocardial infarction. *Exp. Mol. Pathol.* 100: 31-38.
- Marley, K., et al. 2015. Osteoprotegerin activates osteosarcoma cells that co-express RANK and RANKL. *Exp. Cell Res.* 338: 32-38.

PROTOCOLS

See our web site at www.scbt.com for detailed protocols and support products.

Texas Red® is a registered trademark of Molecular Probes (6/02).