

FAM110A (D-8): sc-393049

BACKGROUND

FAM110A (family with sequence similarity 110, member A) is a 295 amino acid protein that localizes to the cytoplasm, the cytoskeleton and the centrosome. Specifically, it colocalizes with microtubules during interphase and at spindle poles in mitosis. Expressed in thyroid, lymph node, trachea, adrenal gland, bone marrow, spleen, thymus, prostate, and peripheral blood leukocyte, FAM110A is thought to interact with CSPP and play a role in proper cell cycle progression. FAM110A expression is increased during S phase and G₂/M phase. The gene encoding FAM110A maps to human chromosome 20, which houses over 60 genes and comprises approximately 2% of the human genome. Chromosome 20 contains a region with numerous genes expressed in the epididymis which are thought important for seminal production and some viewed as potential targets for male contraception.

REFERENCES

1. Prusiner, S.B. 1998. The prion diseases. *Brain Pathol.* 8: 499-513.
2. Collins, S., et al. 2001. Gerstmann-Sträussler-Scheinker syndrome, fatal familial insomnia and kuru: a review of these less common human transmissible spongiform encephalopathies. *J. Clin. Neurosci.* 8: 387-397.
3. Masullo, C. and Macchi, G. 2001. Does PRNP gene control the clinical and pathological phenotype of human spongiform transmissible encephalopathies? *Clin. Neuropathol.* 20: 19-25.
4. Joó, J.G., et al. 2006. Trisomy 20 mosaicism and nonmosaic trisomy 20: a report of 2 cases. *J. Reprod. Med.* 51: 209-212.
5. Ville, D., et al. 2006. Early pattern of epilepsy in the ring chromosome 20 syndrome. *Epilepsia* 47: 543-549.
6. Elghezal, H., et al. 2007. Ring chromosome 20 syndrome without deletions of the subtelomeric and CHRNA4-KCNQ2 genes loci. *Eur. J. Med. Genet.* 50: 441-445.
7. Kazantsev, A.G. 2007. Cellular pathways leading to neuronal dysfunction and degeneration. *Drug News Perspect.* 20: 501-509.
8. Lundwall, A. 2007. A locus on chromosome 20 encompassing genes that are highly expressed in the epididymis. *Asian J. Androl.* 9: 540-544.
9. O'Rand, M.G., et al. 2007. Eppin: an epididymal protease inhibitor and a target for male contraception. *Soc. Reprod. Fertil. Suppl.* 63: 445-453.

CHROMOSOMAL LOCATION

Genetic locus: FAM110A (human) mapping to 20p13; Fam110a (mouse) mapping to 2 G3.

SOURCE

FAM110A (D-8) is a mouse monoclonal antibody raised against amino acids 32-91 mapping near the N-terminus of FAM110A of human origin.

PRODUCT

Each vial contains 200 µg IgG_{2a} kappa light chain in 1.0 ml of PBS with < 0.1% sodium azide and 0.1% gelatin.

APPLICATIONS

FAM110A (D-8) is recommended for detection of FAM110A of mouse, rat and human origin by Western Blotting (starting dilution 1:100, dilution range 1:100-1:1000), immunoprecipitation [1-2 µg per 100-500 µg of total protein (1 ml of cell lysate)], immunofluorescence (starting dilution 1:50, dilution range 1:50-1:500) and solid phase ELISA (starting dilution 1:30, dilution range 1:30-1:3000).

Suitable for use as control antibody for FAM110A siRNA (h): sc-77297, FAM110A siRNA (m): sc-77298, FAM110A shRNA Plasmid (h): sc-77297-SH, FAM110A shRNA Plasmid (m): sc-77298-SH, FAM110A shRNA (h) Lentiviral Particles: sc-77297-V and FAM110A shRNA (m) Lentiviral Particles: sc-77298-V.

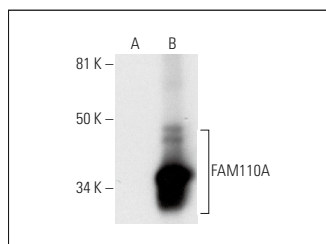
Molecular Weight of FAM110A: 31 kDa.

Positive Controls: FAM110A (m4): 293T Lysate: sc-126828 or NIH/3T3 whole cell lysate: sc-2210.

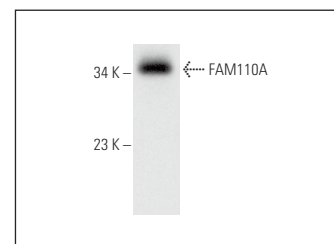
RECOMMENDED SUPPORT REAGENTS

To ensure optimal results, the following support reagents are recommended: 1) Western Blotting: use m-IgGκ BP-HRP: sc-516102 or m-IgGκ BP-HRP (Cruz Marker): sc-516102-CM (dilution range: 1:1000-1:10000), Cruz Marker™ Molecular Weight Standards: sc-2035, UltraCruz® Blocking Reagent: sc-516214 and Western Blotting Luminol Reagent: sc-2048. 2) Immunoprecipitation: use Protein A/G PLUS-Agarose: sc-2003 (0.5 ml agarose/2.0 ml). 3) Immunofluorescence: use m-IgGκ BP-FITC: sc-516140 or m-IgGκ BP-PE: sc-516141 (dilution range: 1:50-1:200) with UltraCruz® Mounting Medium: sc-24941 or UltraCruz® Hard-set Mounting Medium: sc-359850.

DATA



FAM110A (D-8): sc-393049. Western blot analysis of FAM110A expression in non-transfected: sc-117752 (A) and mouse FAM110A transfected: sc-126828 (B) 293T whole cell lysates.



FAM110A (D-8): sc-393049. Western blot analysis of FAM110A expression in NIH/3T3 whole cell lysate.

STORAGE

Store at 4° C, **DO NOT FREEZE**. Stable for one year from the date of shipment. Non-hazardous. No MSDS required.

RESEARCH USE

For research use only, not for use in diagnostic procedures.