

NDUFB11 (E-6): sc-393110

BACKGROUND

Complex I (also known as NADH dehydrogenase) of the electron transport chain (respiratory chain) is an enzymatic complex that catalyzes the transfer of electrons from NADH to ubiquinone. Free energy from the reaction is conserved in the transfer of protons into the intermembrane space to create an electrochemical proton gradient, a driving force for ATP synthesis. Complex I is a complicated, multi-protein, L-shaped complex composed of at least 45 different subunits and located in the mitochondrial inner membrane. NDUFB11 (NADH dehydrogenase (ubiquinone) 1 β subcomplex subunit 11), also known as ESSS, Np15, Np17.3 (neuronal protein 17.3) or p17.3, is a hydrophobic transmembrane protein belonging to the Complex I NDUFB11 subunit family. Ubiquitously expressed, NDUFB11 localizes to the inner membrane of the mitochondrion and functions as an accessory subunit of Complex I. The cAMP-dependent phosphorylation of NDUFB11 is important for the regulation of Complex I activity.

CHROMOSOMAL LOCATION

Genetic locus: NDUFB11 (human) mapping to Xp11.23; Ndufb11 (mouse) mapping to X A1.3.

SOURCE

NDUFB11 (E-6) is a mouse monoclonal antibody raised against amino acids 1-151 representing full length NDUFB11 of mouse origin.

PRODUCT

Each vial contains 200 μ g IgG₃ kappa light chain in 1.0 ml of PBS with < 0.1% sodium azide and 0.1% gelatin.

STORAGE

Store at 4° C, ****DO NOT FREEZE****. Stable for one year from the date of shipment. Non-hazardous. No MSDS required.

APPLICATIONS

NDUFB11 (E-6) is recommended for detection of NDUFB11 of mouse, rat and human origin by Western Blotting (starting dilution 1:100, dilution range 1:100-1:1000), immunoprecipitation [1-2 μ g per 100-500 μ g of total protein (1 ml of cell lysate)], immunofluorescence (starting dilution 1:50, dilution range 1:50-1:500), immunohistochemistry (including paraffin-embedded sections) (starting dilution 1:50, dilution range 1:50-1:500) and solid phase ELISA (starting dilution 1:30, dilution range 1:30-1:3000).

Suitable for use as control antibody for NDUFB11 siRNA (h): sc-90885, NDUFB11 siRNA (m): sc-149878, NDUFB11 shRNA Plasmid (h): sc-90885-SH, NDUFB11 shRNA Plasmid (m): sc-149878-SH, NDUFB11 shRNA (h) Lentiviral Particles: sc-90885-V and NDUFB11 shRNA (m) Lentiviral Particles: sc-149878-V.

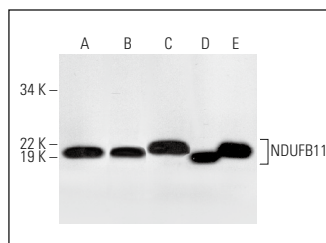
Molecular Weight of phosphorylated NDUFB11: 18 kDa.

Positive Controls: c4 whole cell lysate: sc-364186, NIH/3T3 whole cell lysate: sc-2210 or HeLa whole cell lysate: sc-2200.

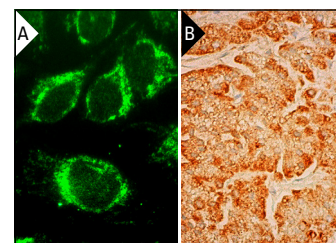
RECOMMENDED SUPPORT REAGENTS

To ensure optimal results, the following support reagents are recommended: 1) Western Blotting: use m-IgG κ BP-HRP: sc-516102 or m-IgG κ BP-HRP (Cruz Marker): sc-516102-CM (dilution range: 1:1000-1:10000), Cruz Marker™ Molecular Weight Standards: sc-2035, UltraCruz® Blocking Reagent: sc-516214 and Western Blotting Luminol Reagent: sc-2048. 2) Immunoprecipitation: use Protein A/G PLUS-Agarose: sc-2003 (0.5 ml agarose/2.0 ml). 3) Immunofluorescence: use m-IgG κ BP-FITC: sc-516140 or m-IgG κ BP-PE: sc-516141 (dilution range: 1:50-1:200) with UltraCruz® Mounting Medium: sc-24941 or UltraCruz® Hard-set Mounting Medium: sc-359850. 4) Immunohistochemistry: use m-IgG κ BP-HRP: sc-516102 with DAB, 50X: sc-24982 and Immunohistomount: sc-45086, or Organo/Limonene Mount: sc-45087.

DATA



NDUFB11 (E-6): sc-393110. Western blot analysis of NDUFB11 expression in c4 (A), NIH/3T3 (B) and HeLa (C) whole cell lysates and mouse heart (D) and human heart (E) tissue extracts.



NDUFB11 (E-6): sc-393110. Immunofluorescence staining of methanol-fixed HeLa cells showing mitochondrial localization (A). Immunoperoxidase staining of formalin fixed, paraffin-embedded human adrenal gland tissue showing cytoplasmic staining of glandular cells (B).

SELECT PRODUCT CITATIONS

1. Jackson, T.D., et al. 2022. Sideroflexin 4 is a complex I assembly factor that interacts with the MCIA complex and is required for the assembly of the ND2 module. *Proc. Natl. Acad. Sci. USA* 119: e2115566119.

RESEARCH USE

For research use only, not for use in diagnostic procedures.

PROTOCOLS

See our web site at www.scbt.com for detailed protocols and support products.