

# DOM3Z (D-9): sc-393167

## BACKGROUND

DOM3Z (dom-3 homolog Z), also known as NG6 or DOM3L, is a 396 amino acid ubiquitously expressed protein belonging to the DOM3Z family. The gene encoding DOM3Z maps to human chromosome 6 in the major histocompatibility complex (MHC) class III region. Chromosome 6 contains 170 million base pairs and comprises nearly 6% of the human genome. Deletion of a portion of the q arm of chromosome 6 is associated with early onset intestinal cancer, suggesting the presence of a cancer susceptibility locus. Additionally, porphyria cutanea tarda, Parkinson's disease and Stickler syndrome are all associated with genes that map to chromosome 6.

## REFERENCES

1. Brunner, H.G., et al. 1994. A Stickler syndrome gene is linked to chromosome 6 near the COL11A2 gene. *Hum. Mol. Genet.* 3: 1561-1564.
2. Yu, C.Y. 1998. Molecular genetics of the human MHC complement gene cluster. *Exp. Clin. Immunogenet.* 15: 213-230.
3. Yang, Z., et al. 1998. Four ubiquitously expressed genes, RD (D6S45)-SKI2V (SKI2V2L)-DOM3Z-RP1 (D6S60E), are present between complement component genes factor B and C4 in the class III region of the HLA. *Genomics* 53: 338-347.
4. Yang, Z. and Yu, C.Y. 2000. Organizations and gene duplications of the human and mouse MHC complement gene clusters. *Exp. Clin. Immunogenet.* 17: 1-17.
5. Cesari, R., et al. 2003. Parkin, a gene implicated in autosomal recessive juvenile parkinsonism, is a candidate tumor suppressor gene on chromosome 6q25-q27. *Proc. Natl. Acad. Sci. USA* 100: 5956-5961.

## CHROMOSOMAL LOCATION

Genetic locus: DOM3Z (human) mapping to 6p21.33; Dom3z (mouse) mapping to 17 B1.

## SOURCE

DOM3Z (D-9) is a mouse monoclonal antibody raised against amino acids 82-381 mapping within an internal region of DOM3Z of human origin.

## PRODUCT

Each vial contains 200 µg IgG<sub>1</sub> kappa light chain in 1.0 ml of PBS with < 0.1% sodium azide and 0.1% gelatin.

DOM3Z (D-9) is available conjugated to agarose (sc-393167 AC), 500 µg/0.25 ml agarose in 1 ml, for IP; to HRP (sc-393167 HRP), 200 µg/ml, for WB, IHC(P) and ELISA; to either phycoerythrin (sc-393167 PE), fluorescein (sc-393167 FITC), Alexa Fluor® 488 (sc-393167 AF488), Alexa Fluor® 546 (sc-393167 AF546), Alexa Fluor® 594 (sc-393167 AF594) or Alexa Fluor® 647 (sc-393167 AF647), 200 µg/ml, for WB (RGB), IF, IHC(P) and FCM; and to either Alexa Fluor® 680 (sc-393167 AF680) or Alexa Fluor® 790 (sc-393167 AF790), 200 µg/ml, for Near-Infrared (NIR) WB, IF and FCM.

## RESEARCH USE

For research use only, not for use in diagnostic procedures.

## APPLICATIONS

DOM3Z (D-9) is recommended for detection of DOM3Z of mouse, rat and human origin by Western Blotting (starting dilution 1:100, dilution range 1:100-1:1000), immunoprecipitation [1-2 µg per 100-500 µg of total protein (1 ml of cell lysate)], immunofluorescence (starting dilution 1:50, dilution range 1:50-1:500) and solid phase ELISA (starting dilution 1:30, dilution range 1:30-1:3000).

Suitable for use as control antibody for DOM3Z siRNA (h): sc-95321, DOM3Z siRNA (m): sc-143143, DOM3Z shRNA Plasmid (h): sc-95321-SH, DOM3Z shRNA Plasmid (m): sc-143143-SH, DOM3Z shRNA (h) Lentiviral Particles: sc-95321-V and DOM3Z shRNA (m) Lentiviral Particles: sc-143143-V.

Molecular Weight of DOM3Z: 45 kDa.

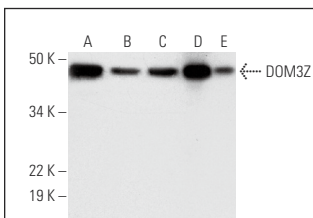
Positive Controls: SH-SY5Y cell lysate: sc-3812, MOLT-4 cell lysate: sc-2233 or Raji whole cell lysate: sc-364236.

## RECOMMENDED SUPPORT REAGENTS

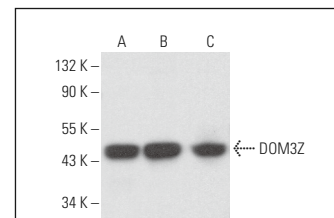
To ensure optimal results, the following support reagents are recommended:

- 1) Western Blotting: use m-IgGκ BP-HRP: sc-516102 or m-IgGκ BP-HRP (Cruz Marker): sc-516102-CM (dilution range: 1:1000-1:10000), Cruz Marker™ Molecular Weight Standards: sc-2035, UltraCruz® Blocking Reagent: sc-516214 and Western Blotting Luminol Reagent: sc-2048.
- 2) Immunoprecipitation: use Protein A/G PLUS-Agarose: sc-2003 (0.5 ml agarose/2.0 ml).
- 3) Immunofluorescence: use m-IgGκ BP-FITC: sc-516140 or m-IgGκ BP-PE: sc-516141 (dilution range: 1:50-1:200) with UltraCruz® Mounting Medium: sc-24941 or UltraCruz® Hard-set Mounting Medium: sc-359850.

## DATA



DOM3Z (D-9): sc-393167. Western blot analysis of DOM3Z expression in SH-SY5Y (A), MOLT-4 (B) and Raji (C) whole cell lysates and mouse testis (D) and human testis (E) tissue extracts.



DOM3Z (D-9): sc-393167. Western blot analysis of DOM3Z expression in CCRF-CEM (A), SK-N-SH (B) and RAW 264.7 (C) whole cell lysates.

## STORAGE

Store at 4° C, \*\*DO NOT FREEZE\*\*. Stable for one year from the date of shipment. Non-hazardous. No MSDS required.

## PROTOCOLS

See our web site at [www.scbt.com](http://www.scbt.com) for detailed protocols and support products.

Alexa Fluor® is a trademark of Molecular Probes, Inc., Oregon, USA