

HCF2 (C-6): sc-393250

BACKGROUND

The herpes simplex virus (HSV) infection is initiated by VP16, a viral transcription factor that activates the viral immediate-early (IE) genes. VP16 recognizes the IE gene promoters by forming a multiprotein complex with Oct-1 and HCF1 (host cell factor 1), a nuclear protein required for progression through the G₁ phase of the cell cycle. This multiprotein complex, called C1, is responsible for transcription of the HSV immediate-early genes and may be critical for the regulation of the HSV lytic-latent cycle. A second HCF-like protein, designated HCF2 is smaller than HCF1 and is homologous with HCF1 in the β -propeller domain, which is required for association with VP16. HCF2 associates with VP16 and supports complex assembly with Oct-1 and DNA, although binds VP16 less efficiently than HCF1. This VP16 binding selectivity is dictated by differences in the Kelch repeats of the β -propeller domains of HCF1 and HCF2.

REFERENCES

1. Johnson, K.M., et al. 1999. Herpes simplex virus transactivator VP16 discriminates between HCF-1 and a novel family member, HCF-2. *J. Virol.* 73: 3930-3940.
2. Lu, R. and Misra, V. 2000. Zhangfei: a second cellular protein interacts with herpes simplex virus accessory factor HCF in a manner similar to Luman and VP16. *Nucleic Acids Res.* 28: 2446-2454.
3. Mahajan, S.S. and Wilson, A.C. 2000. Mutations in host cell factor 1 separate its role in cell proliferation from recruitment of VP16 and LZIP. *Mol. Cell. Biol.* 20: 919-928.
4. Scarr, R.B., et al. 2000. A novel 50-kilodalton fragment of host cell factor 1 (C1) in G₀ cells. *Mol. Cell. Biol.* 20: 3568-3575.
5. Vogel, J.L. and Kristie, T.M. 2000. The novel coactivator C1 (HCF) coordinates multiprotein enhancer formation and mediates transcription activation by GABP. *EMBO J.* 19: 683-690.

CHROMOSOMAL LOCATION

Genetic locus: HCF2 (human) mapping to 12q23.3; Hcf2 (mouse) mapping to 10 C1.

SOURCE

HCF2 (C-6) is a mouse monoclonal antibody raised against amino acids 555-792 mapping at the C-terminus of HCF2 of human origin.

PRODUCT

Each vial contains 200 μ g IgG₁ kappa light chain in 1.0 ml of PBS with < 0.1% sodium azide and 0.1% gelatin.

HCF2 (C-6) is available conjugated to agarose (sc-393250 AC), 500 μ g/0.25 ml agarose in 1 ml, for IP; to HRP (sc-393250 HRP), 200 μ g/ml, for WB, IHC(P) and ELISA; to either phycoerythrin (sc-393250 PE), fluorescein (sc-393250 FITC), Alexa Fluor® 488 (sc-393250 AF488), Alexa Fluor® 546 (sc-393250 AF546), Alexa Fluor® 594 (sc-393250 AF594) or Alexa Fluor® 647 (sc-393250 AF647), 200 μ g/ml, for WB (RGB), IF, IHC(P) and FCM; and to either Alexa Fluor® 680 (sc-393250 AF680) or Alexa Fluor® 790 (sc-393250 AF790), 200 μ g/ml, for Near-Infrared (NIR) WB, IF and FCM.

APPLICATIONS

HCF2 (C-6) is recommended for detection of HCF2 of mouse, rat and human origin by Western Blotting (starting dilution 1:100, dilution range 1:100-1:1000), immunoprecipitation [1-2 μ g per 100-500 μ g of total protein (1 ml of cell lysate)], immunofluorescence (starting dilution 1:50, dilution range 1:50-1:500) and solid phase ELISA (starting dilution 1:30, dilution range 1:30-1:3000).

Suitable for use as control antibody for HCF2 siRNA (h): sc-37998, HCF2 siRNA (m): sc-37999, HCF2 shRNA Plasmid (h): sc-37998-SH, HCF2 shRNA Plasmid (m): sc-37999-SH, HCF2 shRNA (h) Lentiviral Particles: sc-37998-V and HCF2 shRNA (m) Lentiviral Particles: sc-37999-V.

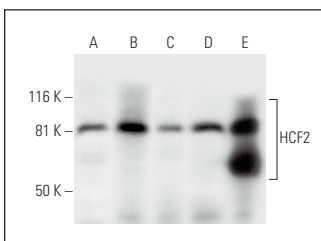
Molecular Weight of HCF2: 87 kDa.

Positive Controls: Jurkat whole cell lysate: sc-2204, Hs 181 Tes whole cell lysate: sc-364779 or RT-4 whole cell lysate: sc-364257.

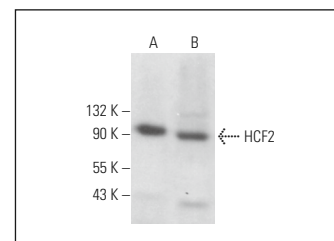
RECOMMENDED SUPPORT REAGENTS

To ensure optimal results, the following support reagents are recommended: 1) Western Blotting: use m-IgG κ BP-HRP: sc-516102 or m-IgG κ BP-HRP (Cruz Marker): sc-516102-CM (dilution range: 1:1000-1:10000), Cruz Marker™ Molecular Weight Standards: sc-2035, UltraCruz® Blocking Reagent: sc-516214 and Western Blotting Luminol Reagent: sc-2048. 2) Immunoprecipitation: use Protein A/G PLUS-Agarose: sc-2003 (0.5 ml agarose/2.0 ml). 3) Immunofluorescence: use m-IgG κ BP-FITC: sc-516140 or m-IgG κ BP-PE: sc-516141 (dilution range: 1:50-1:200) with UltraCruz® Mounting Medium: sc-24941 or UltraCruz® Hard-set Mounting Medium: sc-359850.

DATA



HCF2 (C-6): sc-393250. Western blot analysis of HCF2 expression in Jurkat (A), Hs 181 Tes (B), RT-4 (C) and U-251-MG (D) whole cell lysates and human testis tissue extract (E).



HCF2 (C-6): sc-393250. Western blot analysis of HCF2 expression in U-251-MG (A) and C6 (B) whole cell lysates.

STORAGE

Store at 4° C, **DO NOT FREEZE**. Stable for one year from the date of shipment. Non-hazardous. No MSDS required.

RESEARCH USE

For research use only, not for use in diagnostic procedures.

Alexa Fluor® is a trademark of Molecular Probes, Inc., Oregon, USA