

ALDH4A1 (C-12): sc-393354

BACKGROUND

Aldehyde dehydrogenases (ALDHs) mediate NADP⁺-dependent oxidation of aldehydes into acids during detoxification of alcohol-derived acetaldehyde, lipid peroxidation and metabolism of corticosteroids, biogenic amines and neurotransmitters. ALDH4A1 (aldehyde dehydrogenase 4 family member A1), also known as P5CD (Δ^1 -pyrroline-5-carboxylate dehydrogenase), P5CDh, P5CDhL, P5CDhS or ALDH4, is a major enzyme involved in the proline degradation pathway. Localizing to the mitochondrial matrix, ALDH4A1 catalyzes the conversion of Δ^1 -pyrroline-5-carboxylate (P5C) to glutamate. A mutation in the gene encoding ALDH4A1 results in HPII (hyperprolinemia type II), a disease characterized by an excess of P5C and proline that is associated with mental retardation and seizures.

REFERENCES

- Goodman, S.I., et al. 1974. Defective hydroxyproline metabolism in type II hyperprolinemia. *Biochem. Med.* 10: 329-336.
- Flynn, M.P., et al. 1989. Type II hyperprolinaemia in a pedigree of Irish travellers (nomads). *Arch. Dis. Child.* 64: 1699-1707.
- Yoshida, Y., et al. 1997. Regulation of levels of proline as an osmolyte in plants under water stress. *Plant Cell Physiol.* 38: 1095-1102.
- Geraghty, M.T., et al. 1998. Mutations in the Δ^1 -pyrroline 5-carboxylate dehydrogenase gene cause type II hyperprolinemia. *Hum. Mol. Genet.* 7: 1411-1415.
- Vasilou, V., et al. 1999. Eukaryotic aldehyde dehydrogenase (ALDH) genes: human polymorphisms, and recommended nomenclature based on divergent evolution and chromosomal mapping. *Pharmacogenetics* 9: 421-434.
- Vasilou, V. and Pappa, A. 2000. Polymorphisms of human aldehyde dehydrogenases. Consequences for drug metabolism and disease. *Pharmacology* 61: 192-198.
- Online Mendelian Inheritance in Man, OMIMTM. 2002. Johns Hopkins University, Baltimore, MD. MIM Number: 606811. World Wide Web URL: <http://www.ncbi.nlm.nih.gov/omim/>
- Onenli-Mungan, N., et al. 2004. Type II hyperprolinemia: a case report. *Turk. J. Pediatr.* 46: 167-169.
- Yoon, K.A., et al. 2004. Identification of ALDH4 as a p53-inducible gene and its protective role in cellular stresses. *J. Hum. Genet.* 49: 134-140.

CHROMOSOMAL LOCATION

Genetic locus: ALDH4A1 (human) mapping to 1p36.13.

SOURCE

ALDH4A1 (C-12) is a mouse monoclonal antibody raised against amino acids 1-300 mapping at the N-terminus of ALDH4A1 of human origin.

PRODUCT

Each vial contains 200 μ g IgG₁ kappa light chain in 1.0 ml of PBS with < 0.1% sodium azide and 0.1% gelatin.

APPLICATIONS

ALDH4A1 (C-12) is recommended for detection of ALDH4A1 of human origin by Western Blotting (starting dilution 1:100, dilution range 1:100-1:1000), immunoprecipitation [1-2 μ g per 100-500 μ g of total protein (1 ml of cell lysate)], immunofluorescence (starting dilution 1:50, dilution range 1:50-1:500), immunohistochemistry (including paraffin-embedded sections) (starting dilution 1:50, dilution range 1:50-1:500) and solid phase ELISA (starting dilution 1:30, dilution range 1:30-1:3000).

Suitable for use as control antibody for ALDH4A1 siRNA (h): sc-72478, ALDH4A1 shRNA Plasmid (h): sc-72478-SH and ALDH4A1 shRNA (h) Lentiviral Particles: sc-72478-V.

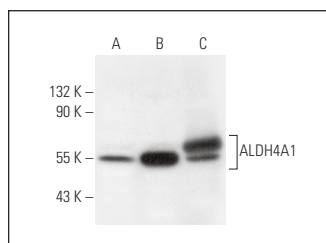
Molecular Weight of ALDH4A1: 62 kDa.

Positive Controls: Hep G2 cell lysate: sc-2227, human liver extract: sc-363766 or human heart extract: sc-363763.

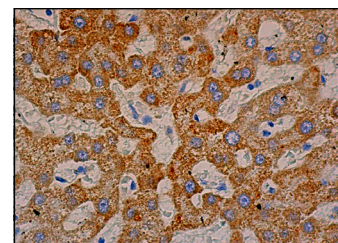
RECOMMENDED SUPPORT REAGENTS

To ensure optimal results, the following support reagents are recommended: 1) Western Blotting: use m-IgG κ BP-HRP: sc-516102 or m-IgG κ BP-HRP (Cruz Marker): sc-516102-CM (dilution range: 1:1000-1:10000), Cruz MarkerTM Molecular Weight Standards: sc-2035, UltraCruz[®] Blocking Reagent: sc-516214 and Western Blotting Luminol Reagent: sc-2048. 2) Immunoprecipitation: use Protein A/G PLUS-Agarose: sc-2003 (0.5 ml agarose/2.0 ml). 3) Immunofluorescence: use m-IgG κ BP-FITC: sc-516140 or m-IgG κ BP-PE: sc-516141 (dilution range: 1:50-1:200) with UltraCruz[®] Mounting Medium: sc-24941 or UltraCruz[®] Hard-set Mounting Medium: sc-359850. 4) Immunohistochemistry: use m-IgG κ BP-HRP: sc-516102 with DAB, 50X: sc-24982 and Immunohistomount: sc-45086, or Organo/Limonene Mount: sc-45087.

DATA



ALDH4A1 (C-12): sc-393354. Western blot analysis of ALDH4A1 expression in Hep G2 whole cell lysate (A) and human liver (B) and human heart (C) tissue extracts.



ALDH4A1 (C-12): sc-393354. Immunoperoxidase staining of formalin fixed, paraffin-embedded human liver tissue showing cytoplasmic staining of hepatocytes.

STORAGE

Store at 4° C, **DO NOT FREEZE**. Stable for one year from the date of shipment. Non-hazardous. No MSDS required.

RESEARCH USE

For research use only, not for use in diagnostic procedures.