

Dia 2 (C-12): sc-393499

BACKGROUND

Dia 2, also known as DIAPH2 (diaphanous homolog 2), DRF2 or mDia3 of mouse origin, is a mammalian homolog of the *Drosophila* diaphanous gene, and belongs to a family of formin homology (FH) proteins which are characterized by having tandemly aligned FH1 (formin homology 1) and FH2 (formin homology 2) domains in their carboxy terminal regions. Dia 2 contains a DAD (diaphanous autoregulatory) domain, which is involved in the elongation of Actin filaments, and a GBD/FH3 (Rho GTPase-binding/formin homology 3) domain, which interacts with the DAD domain via autoinhibitory interactions to regulate the activation of Dia 2. Expressed in testis and ovary, Dia 2 may be involved in oogenesis. Defects to the gene encoding Dia 2 have been implicated in premature ovarian failure type 2A, a disorder characterized by decreased ovarian function. Dia 2 exists as three alternatively spliced isoforms.

REFERENCES

1. Lynch, E.D., et al. 1997. Nonsyndromic deafness DFNA1 associated with mutation of a human homolog of the *Drosophila* gene diaphanous. *Science* 278: 1315-1318.
2. Bione, S., et al. 1998. A human homologue of the *Drosophila melanogaster* diaphanous gene is disrupted in a patient with premature ovarian failure: evidence for conserved function in oogenesis and implications for human sterility. *Am. J. Hum. Genet.* 62: 533-541.
3. Alberts, A.S., et al. 1998. Analysis of RhoA-binding proteins reveals an interaction domain conserved in heterotrimeric G protein β subunits and the yeast response regulator protein Skn7. *J. Biol. Chem.* 273: 8616-8622.
4. Nakano, K., et al. 1999. Distinct actions and cooperative roles of ROCK and mDia in Rho small G protein-induced reorganization of the Actin cytoskeleton in Madin-Darby canine kidney cells. *Mol. Biol. Cell* 10: 2481-2491.

CHROMOSOMAL LOCATION

Genetic locus: DIAPH2 (human) mapping to Xq21.33; Diap2 (mouse) mapping to X E3.

SOURCE

Dia 2 (C-12) is a mouse monoclonal antibody specific for an epitope mapping between amino acids 48-69 within an internal region of Dia 2 of human origin.

PRODUCT

Each vial contains 200 μ g IgG_{2b} kappa light chain in 1.0 ml of PBS with < 0.1% sodium azide and 0.1% gelatin.

Blocking peptide available for competition studies, sc-393499 P, (100 μ g peptide in 0.5 ml PBS containing < 0.1% sodium azide and 0.2% stabilizer protein).

STORAGE

Store at 4° C, **DO NOT FREEZE**. Stable for one year from the date of shipment. Non-hazardous. No MSDS required.

APPLICATIONS

Dia 2 (C-12) is recommended for detection of Dia 2 (also designated mDia3 of mouse origin) of mouse, rat and human origin by Western Blotting (starting dilution 1:100, dilution range 1:100-1:1000), immunoprecipitation [1-2 μ g per 100-500 μ g of total protein (1 ml of cell lysate)], immunofluorescence (starting dilution 1:50, dilution range 1:50-1:500) and solid phase ELISA (starting dilution 1:30, dilution range 1:30-1:3000).

Dia 2 (C-12) is also recommended for detection of Dia 2 (also designated mDia3 of mouse origin) in additional species, including bovine and avian.

Suitable for use as control antibody for Dia 2 siRNA (h): sc-35192, Dia 2 siRNA (m): sc-155883, Dia 2 shRNA Plasmid (h): sc-35192-SH, Dia 2 shRNA Plasmid (m): sc-155883-SH, Dia 2 shRNA (h) Lentiviral Particles: sc-35192-V and Dia 2 shRNA (m) Lentiviral Particles: sc-155883-V.

Molecular Weight of Dia 2: 134 kDa.

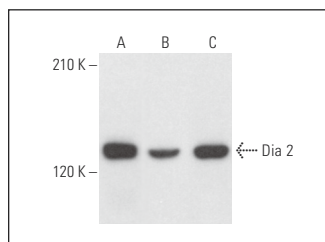
Positive Controls: MDA-MB-435S whole cell lysate: sc-364184, COLO 205 whole cell lysate: sc-364177 or NIH/3T3 whole cell lysate: sc-2210.

RECOMMENDED SUPPORT REAGENTS

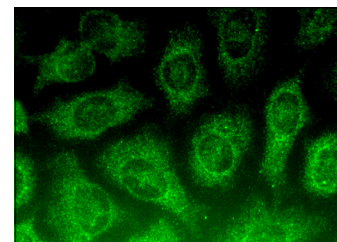
To ensure optimal results, the following support reagents are recommended:

- 1) Western Blotting: use m-IgG κ BP-HRP: sc-516102 or m-IgG κ BP-HRP (Cruz Marker): sc-516102-CM (dilution range: 1:1000-1:10000), Cruz Marker™ Molecular Weight Standards: sc-2035, UltraCruz® Blocking Reagent: sc-516214 and Western Blotting Luminol Reagent: sc-2048.
- 2) Immunoprecipitation: use Protein A/G PLUS-Agarose: sc-2003 (0.5 ml agarose/2.0 ml).
- 3) Immunofluorescence: use m-IgG κ BP-FITC: sc-516140 or m-IgG κ BP-PE: sc-516141 (dilution range: 1:50-1:200) with UltraCruz® Mounting Medium: sc-24941 or UltraCruz® Hard-set Mounting Medium: sc-359850.

DATA



Dia 2 (C-12): sc-393499. Western blot analysis of Dia 2 expression in NIH/3T3 (A), COLO 205 (B) and MDA-MB-435S (C) whole cell lysates.



Dia 2 (C-12): sc-393499. Immunofluorescence staining of methanol-fixed HeLa cells showing cytoplasmic localization.

SELECT PRODUCT CITATIONS

1. Nejedla, M., et al. 2016. Profilin connects Actin assembly with microtubule dynamics. *Mol. Biol. Cell* 27: 2381-2393.

RESEARCH USE

For research use only, not for use in diagnostic procedures.