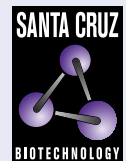


CHMP3 (C-1): sc-393541



The Power to Question

BACKGROUND

The charged multivesicular body proteins, commonly designated CHMPs, belong to the vacuolar sorting protein family and function as chromatin-modifying proteins. CHMP1-6 are all components of ESCRT (endosomal sorting complex required for transport) I, II or III complexes. These complexes are crucial for sorting endosomal articles into multivesicular bodies (MVBs), as well as required for the formation of these bodies. CHMP3, also known as Vps24, associates directly with CHMP2 and CHMP4 for the disassembly of ESCRT-III complex in an ATP-dependent manner. During HIV-1 infection, the virus uses the ESCRT-III complex to mediate budding and exocytosis of viral proteins. Overexpression of CHMP3 strongly inhibits HIV-1 release. CHMP3 is expressed in brain, skeletal muscle, heart, lung, kidney and liver.

REFERENCES

1. von Schwedler, U.K., Stuchell, M., Müller, B., Ward, D.M., Chung, H.Y., Morita, E., Wang, H.E., Davis, T., He, G.P., Cimbara, D.M., Scott, A., Kräusslich, H.G., Kaplan, J., Morham, S.G. and Sundquist, W.I. 2003. The protein network of HIV budding. *Cell* 114: 701-713.
2. Agromayor, M. and Martin-Serrano, J. 2006. Interaction of AMSh with ESCRT-III and deubiquitination of endosomal cargo. *J. Biol. Chem.* 281: 23083-23091.
3. Muziol, T., Pineda-Molina, E., Ravelli, R.B., Zamborini, A., Usami, Y., Gottlinger, H. and Weissenhorn, W. 2006. Structural basis for budding by the ESCRT-III factor CHMP3. *Dev. Cell* 10: 821-830.
4. Bache, K.G., Stuffers, S., Malerod, L., Slagsvold, T., Raiborg, C., Lechardeur, D., Walchli, S., Lukacs, G.L., Brech, A. and Stenmark, H. 2006. The ESCRT-III subunit hVps24 is required for degradation but not silencing of the epidermal growth factor receptor. *Mol. Biol. Cell* 17: 2513-2523.

CHROMOSOMAL LOCATION

Genetic locus: CHMP3 (human) mapping to 2p11.2; Chmp3 (mouse) mapping to 6 C1.

SOURCE

CHMP3 (C-1) is a mouse monoclonal antibody specific for an epitope mapping between amino acids 28-49 near the N-terminus of CHMP3 of human origin.

PRODUCT

Each vial contains 200 µg IgG_{2a} kappa light chain in 1.0 ml of PBS with < 0.1% sodium azide and 0.1% gelatin.

Blocking peptide available for competition studies, sc-393541 P, (100 µg peptide in 0.5 ml PBS containing < 0.1% sodium azide and 0.2% stabilizer protein).

STORAGE

Store at 4° C, **DO NOT FREEZE**. Stable for one year from the date of shipment. Non-hazardous. No MSDS required.

APPLICATIONS

CHMP3 (C-1) is recommended for detection of CHMP3 of mouse, rat and human origin by Western Blotting (starting dilution 1:100, dilution range 1:100-1:1000), immunoprecipitation [1-2 µg per 100-500 µg of total protein (1 ml of cell lysate)], immunofluorescence (starting dilution 1:50, dilution range 1:50-1:500) and solid phase ELISA (starting dilution 1:30, dilution range 1:30-1:3000).

CHMP3 (C-1) is also recommended for detection of CHMP3 in additional species, including equine, canine, bovine and porcine.

Suitable for use as control antibody for CHMP3 siRNA (h): sc-60371, CHMP3 siRNA (m): sc-60372, CHMP3 shRNA Plasmid (h): sc-60371-SH, CHMP3 shRNA Plasmid (m): sc-60372-SH, CHMP3 shRNA (h) Lentiviral Particles: sc-60371-V and CHMP3 shRNA (m) Lentiviral Particles: sc-60372-V.

Molecular Weight of CHMP3: 33 kDa.

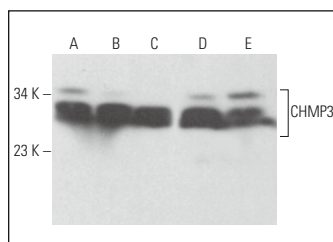
Positive Controls: A-10 cell lysate: sc-3806, CHMP3 (m): 293T Lysate: sc-119240 or Hep G2 cell lysate: sc-2227.

RECOMMENDED SUPPORT REAGENTS

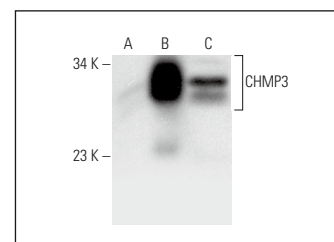
To ensure optimal results, the following support reagents are recommended:

- 1) Western Blotting: use m-IgGκ BP-HRP: sc-516102 or m-IgGκ BP-HRP (Cruz Marker): sc-516102-CM (dilution range: 1:1000-1:10000), Cruz Marker™ Molecular Weight Standards: sc-2035, UltraCruz® Blocking Reagent: sc-516214 and Western Blotting Luminol Reagent: sc-2048.
- 2) Immunoprecipitation: use Protein A/G PLUS-Agarose: sc-2003 (0.5 ml agarose/2.0 ml).
- 3) Immunofluorescence: use m-IgGκ BP-FITC: sc-516140 or m-IgGκ BP-PE: sc-516141 (dilution range: 1:50-1:200) with UltraCruz® Mounting Medium: sc-24941 or UltraCruz® Hard-set Mounting Medium: sc-359850.

DATA



CHMP3 (C-1): sc-393541. Western blot analysis of CHMP3 expression in Hep G2 (A), A549 (B), 3T3-L1 (C) and A-10 (D) whole cell lysates and human brain tissue extract (E).



CHMP3 (C-1): sc-393541. Western blot analysis of CHMP3 expression in non-transfected 293T: sc-117752 (A), mouse CHMP3 transfected 293T: sc-119240 (B) and Hep G2 (C) whole cell lysates.

RESEARCH USE

For research use only, not for use in diagnostic procedures.

PROTOCOLS

See our web site at www.scbt.com for detailed protocols and support products.