

ARMCX3 (A-8): sc-393752

BACKGROUND

The armadillo (ARM) repeat family of proteins are related to the *Drosophila melanogaster* armadillo protein, a protein essential for wingless signal transduction. ARM proteins are involved in a variety of processes such as cell migration, cell proliferation, tissue maintenance and tumorigenesis. They are intracellular proteins and function in signal transduction and cell structure. ARMCX3 (armadillo repeat containing, X-linked 3), also known as ALEX3 (ARM protein lost in epithelial cancers on chromosome X 3), is a single pass membrane protein belonging to the armadillo repeat family of proteins. ARMCX3 contains three ARM repeats and shares 60% sequence similarity with the related proteins, ARMCX1 and ARMCX2. ARMCX3 is believed to play a role in embryonic development and tissue maintenance and may also function as a tumor suppressor.

REFERENCES

1. Kurochkin, I.V., et al. 2001. ALEX1, a novel human armadillo repeat protein that is expressed differentially in normal tissues and carcinomas. *Biochem. Biophys. Res. Commun.* 280: 340-347.
2. Online Mendelian Inheritance in Man, OMIM™. 2002. Johns Hopkins University, Baltimore, MD. MIM Number: 300364. World Wide Web URL: <http://www.ncbi.nlm.nih.gov/omim/>

CHROMOSOMAL LOCATION

Genetic locus: ARMCX3 (human) mapping to Xq22.1; *Armxc3* (mouse) mapping to X E3.

SOURCE

ARMCX3 (A-8) is a mouse monoclonal antibody specific for an epitope mapping between amino acids 98-129 within an internal region of ARMCX3 of human origin.

PRODUCT

Each vial contains 200 µg IgG₁ kappa light chain in 1.0 ml of PBS with < 0.1% sodium azide and 0.1% gelatin.

ARMCX3 (A-8) is available conjugated to agarose (sc-393752 AC), 500 µg/0.25 ml agarose in 1 ml, for IP; to HRP (sc-393752 HRP), 200 µg/ml, for WB, IHC(P) and ELISA; to either phycoerythrin (sc-393752 PE), fluorescein (sc-393752 FITC), Alexa Fluor® 488 (sc-393752 AF488), Alexa Fluor® 546 (sc-393752 AF546), Alexa Fluor® 594 (sc-393752 AF594) or Alexa Fluor® 647 (sc-393752 AF647), 200 µg/ml, for WB (RGB), IF, IHC(P) and FCM; and to either Alexa Fluor® 680 (sc-393752 AF680) or Alexa Fluor® 790 (sc-393752 AF790), 200 µg/ml, for Near-Infrared (NIR) WB, IF and FCM.

Blocking peptide available for competition studies, sc-393752 P, (100 µg peptide in 0.5 ml PBS containing < 0.1% sodium azide and 0.2% stabilizer protein).

Alexa Fluor® is a trademark of Molecular Probes, Inc., Oregon, USA

STORAGE

Store at 4° C, **DO NOT FREEZE**. Stable for one year from the date of shipment. Non-hazardous. No MSDS required.

APPLICATIONS

ARMCX3 (A-8) is recommended for detection of ARMCX3 of mouse, rat and human origin by Western Blotting (starting dilution 1:100, dilution range 1:100-1:1000), immunoprecipitation [1-2 µg per 100-500 µg of total protein (1 ml of cell lysate)], immunofluorescence (starting dilution 1:50, dilution range 1:50-1:500) and solid phase ELISA (starting dilution 1:30, dilution range 1:30-1:3000).

ARMCX3 (A-8) is also recommended for detection of ARMCX3 in additional species, including porcine.

Suitable for use as control antibody for ARMCX3 siRNA (h): sc-91193, ARMCX3 siRNA (m): sc-105090, ARMCX3 shRNA Plasmid (h): sc-91193-SH, ARMCX3 shRNA Plasmid (m): sc-105090-SH, ARMCX3 shRNA (h) Lentiviral Particles: sc-91193-V and ARMCX3 shRNA (m) Lentiviral Particles: sc-105090-V.

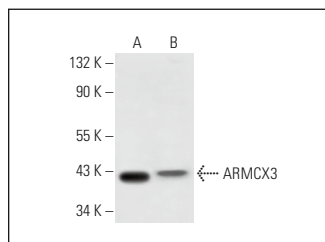
Molecular Weight of ARMCX3: 43 kDa.

Positive Controls: RT-4 whole cell lysate: sc-364257 or 3T3-L1 cell lysate: sc-2243.

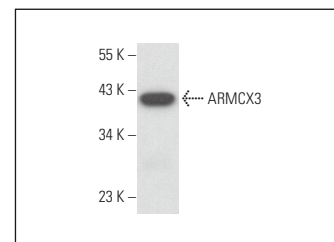
RECOMMENDED SUPPORT REAGENTS

To ensure optimal results, the following support reagents are recommended: 1) Western Blotting: use m-IgGκ BP-HRP: sc-516102 or m-IgGκ BP-HRP (Cruz Marker): sc-516102-CM (dilution range: 1:1000-1:10000), Cruz Marker™ Molecular Weight Standards: sc-2035, UltraCruz® Blocking Reagent: sc-516214 and Western Blotting Luminol Reagent: sc-2048. 2) Immunoprecipitation: use Protein A/G PLUS-Agarose: sc-2003 (0.5 ml agarose/2.0 ml). 3) Immunofluorescence: use m-IgGκ BP-FITC: sc-516140 or m-IgGκ BP-PE: sc-516141 (dilution range: 1:50-1:200) with UltraCruz® Mounting Medium: sc-24941 or UltraCruz® Hard-set Mounting Medium: sc-359850.

DATA



ARMCX3 (A-8): sc-393752. Western blot analysis of ARMCX3 expression in 293T (A) and RT-4 (B) whole cell lysates.



ARMCX3 (A-8): sc-393752. Western blot analysis of ARMCX3 expression in 3T3-L1 whole cell lysate.

SELECT PRODUCT CITATIONS

1. Du, J., et al. 2017. Alex3 suppresses non-small cell lung cancer invasion via Akt/Slug/E-cadherin pathway. *Tumour Biol.* 39: 1010428317701441.

RESEARCH USE

For research use only, not for use in diagnostic procedures.