

Grancalcin (D-12): sc-393792

BACKGROUND

Grancalcin is a calcium-binding protein that is especially abundant in human neutrophils. Grancalcin belongs to the penta EF-hand (PEF) subfamily of EF-hand proteins, which also comprises calpain, sorcin, peflin and ALG-2. Grancalcin forms a homodimer through the association of the unpaired EF5 hands. Grancalcin undergoes important conformational changes upon binding of calcium, which subsequently exposes hydrophobic amino acid residues to direct the protein to hydrophobic surfaces. Grancalcin interacts with L-plastin, a protein known to have Actin bundling activity, which suggests that Grancalcin may play a role in the regulation of neutrophil adhesion. Grancalcin is specifically associated with cells originating in the bone marrow, and it is particularly abundant in neutrophils and monocytes, with relatively small amounts detected in lymphocytes.

REFERENCES

1. Teahan, C.G., Totty, N.F. and Segal, A.W. 1992. Isolation and characterization of Grancalcin, a novel 28 kDa EF-hand calcium-binding protein from human neutrophils. *Biochem. J.* 286: 549-554.
2. Boyhan, A., Casimir, C.M., French, J.K., Teahan, C.G. and Segal, A.W. 1992. Molecular cloning and characterization of Grancalcin, a novel EF-hand calcium-binding protein abundant in neutrophils and monocytes. *J. Biol. Chem.* 267: 2928-2933.
3. Lollike, K., Sorensen, O., Bundgaard, J.R., Segal, A.W., Boyhan, A. and Borregaard, N. 1995. An ELISA for Grancalcin, a novel cytosolic calcium-binding protein present in leukocytes. *J. Immunol. Methods* 185: 1-8.
4. Jia, J., Han, Q., Borregaard, N., Lollike, K. and Cygler, M. 2000. Crystal structure of human Grancalcin, a member of the penta-EF-hand protein family. *J. Mol. Biol.* 300: 1271-1281.
5. Lollike, K., Johnsen, A.H., Durussel, I., Borregaard, N. and Cox, J.A. 2001. Biochemical characterization of the penta-EF-hand protein Grancalcin, and identification of L-Plastin as a binding partner. *J. Biol. Chem.* 276: 17762-17769.

CHROMOSOMAL LOCATION

Genetic locus: GCA (human) mapping to 2q24.2.

SOURCE

Grancalcin (D-12) is a mouse monoclonal antibody specific for an epitope mapping between amino acids 189-214 at the C-terminus of Grancalcin of human origin.

PRODUCT

Each vial contains 200 µg IgG₁ in 1.0 ml of PBS with < 0.1% sodium azide and 0.1% gelatin.

Blocking peptide available for competition studies, sc-393792 P, (100 µg peptide in 0.5 ml PBS containing < 0.1% sodium azide and 0.2% stabilizer protein).

APPLICATIONS

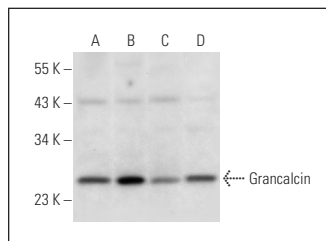
Grancalcin (D-12) is recommended for detection of Grancalcin of human origin by Western Blotting (starting dilution 1:100, dilution range 1:100-1:1000), immunoprecipitation [1-2 µg per 100-500 µg of total protein (1 ml of cell lysate)], immunofluorescence (starting dilution 1:50, dilution range 1:50-1:500) and solid phase ELISA (starting dilution 1:30, dilution range 1:30-1:3000).

Suitable for use as control antibody for Grancalcin siRNA (h): sc-43349, Grancalcin shRNA Plasmid (h): sc-43349-SH and Grancalcin shRNA (h) Lentiviral Particles: sc-43349-V.

Molecular Weight of Grancalcin: 28 kDa.

Positive Controls: HL-60 whole cell lysate: sc-2209, AML-193 whole cell lysate: sc-364182 or THP-1 cell lysate: sc-2238.

DATA



Grancalcin (D-12): sc-393792. Western blot analysis of Grancalcin expression in HL-60 (A), AML-193 (B), THP-1 (C) and MCF7 (D) whole cell lysates.

STORAGE

Store at 4° C, ****DO NOT FREEZE****. Stable for one year from the date of shipment. Non-hazardous. No MSDS required.

RESEARCH USE

For research use only, not for use in diagnostic procedures.

PROTOCOLS

See our web site at www.scbt.com for detailed protocols and support products.