

# FAM163A (G-12): sc-393821

## BACKGROUND

FAM163A, also known as C1orf76 or NDSP (neuroblastoma-derived secretory protein), is a 167 amino acid single-pass membrane protein that belongs to the FAM163 family. Due to the high expression in neuroblastoma, FAM163A may be used as a maker for metastasis in bone marrow. The gene encoding FAM163A maps to human chromosome 1, which spans 260 million base pairs, contains over 3,000 genes and comprises nearly 8% of the human genome. Chromosome 1 houses a large number of disease-associated genes, including those that are involved in familial adenomatous polyposis, Stickler syndrome, Parkinson's disease, Gaucher disease, schizophrenia and Usher syndrome. Aberrations in chromosome 1 are found in a variety of cancers, including head and neck cancer, malignant melanoma and multiple myeloma.

## REFERENCES

1. Eudy, J.D., et al. 1998. Mutation of a gene encoding a protein with extra-cellular matrix motifs in Usher syndrome type IIa. *Science* 280: 1753-1757.
2. Tayebi, N., et al. 2001. Gaucher disease and parkinsonism: a phenotypic and genotypic characterization. *Mol. Genet. Metab.* 73: 313-321.
3. Plasilova, M., et al. 2004. Exclusion of an extracolonic disease modifier locus on chromosome 1p33-36 in a large Swiss familial adenomatous polyposis kindred. *Eur. J. Hum. Genet.* 12: 365-371.
4. Vasudevan, S.A., et al. 2007. Neuroblastoma-derived secretory protein messenger RNA levels correlate with high-risk neuroblastoma. *J. Pediatr. Surg.* 42: 148-152.

## CHROMOSOMAL LOCATION

Genetic locus: FAM163A (human) mapping to 1q25.2; Fam163a (mouse) mapping to 1 G3.

## SOURCE

FAM163A (G-12) is a mouse monoclonal antibody specific for an epitope mapping between amino acids 66-89 within an internal region of FAM163A of human origin.

## PRODUCT

Each vial contains 200 µg IgG<sub>2b</sub> kappa light chain in 1.0 ml of PBS with < 0.1% sodium azide and 0.1% gelatin.

FAM163A (G-12) is available conjugated to agarose (sc-393821 AC), 500 µg/0.25 ml agarose in 1 ml, for IP; to HRP (sc-393821 HRP), 200 µg/ml, for WB, IHC(P) and ELISA; to either phycoerythrin (sc-393821 PE), fluorescein (sc-393821 FITC), Alexa Fluor® 488 (sc-393821 AF488), Alexa Fluor® 546 (sc-393821 AF546), Alexa Fluor® 594 (sc-393821 AF594) or Alexa Fluor® 647 (sc-393821 AF647), 200 µg/ml, for WB (RGB), IF, IHC(P) and FCM; and to either Alexa Fluor® 680 (sc-393821 AF680) or Alexa Fluor® 790 (sc-393821 AF790), 200 µg/ml, for Near-Infrared (NIR) WB, IF and FCM.

Blocking peptide available for competition studies, sc-393821 P, (100 µg peptide in 0.5 ml PBS containing < 0.1% sodium azide and 0.2% stabilizer protein).

Alexa Fluor® is a trademark of Molecular Probes, Inc., Oregon, USA

## APPLICATIONS

FAM163A (G-12) is recommended for detection of FAM163A of mouse, rat and human origin by Western Blotting (starting dilution 1:100, dilution range 1:100-1:1000), immunoprecipitation [1-2 µg per 100-500 µg of total protein (1 ml of cell lysate)], immunofluorescence (starting dilution 1:50, dilution range 1:50-1:500) and solid phase ELISA (starting dilution 1:30, dilution range 1:30-1:3000).

Suitable for use as control antibody for FAM163A siRNA (h): sc-88530, FAM163A siRNA (m): sc-140624, FAM163A shRNA Plasmid (h): sc-88530-SH, FAM163A shRNA Plasmid (m): sc-140624-SH, FAM163A shRNA (h) Lentiviral Particles: sc-88530-V and FAM163A shRNA (m) Lentiviral Particles: sc-140624-V.

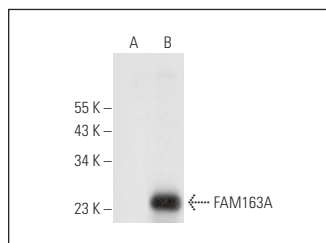
Molecular Weight of FAM163A: 18 kDa.

Positive Controls: FAM163A (h2): 293T Lysate: sc-175533.

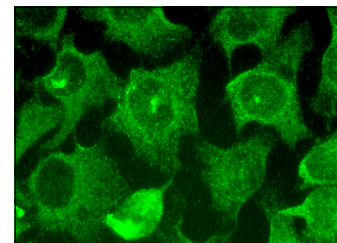
## RECOMMENDED SUPPORT REAGENTS

To ensure optimal results, the following support reagents are recommended: 1) Western Blotting: use m-IgGκ BP-HRP: sc-516102 or m-IgGκ BP-HRP (Cruz Marker): sc-516102-CM (dilution range: 1:1000-1:10000), Cruz Marker™ Molecular Weight Standards: sc-2035, UltraCruz® Blocking Reagent: sc-516214 and Western Blotting Luminol Reagent: sc-2048. 2) Immunoprecipitation: use Protein A/G PLUS-Agarose: sc-2003 (0.5 ml agarose/2.0 ml). 3) Immunofluorescence: use m-IgGκ BP-FITC: sc-516140 or m-IgGκ BP-PE: sc-516141 (dilution range: 1:50-1:200) with UltraCruz® Mounting Medium: sc-24941 or UltraCruz® Hard-set Mounting Medium: sc-359850.

## DATA



FAM163A (G-12): sc-393821. Western blot analysis of FAM163A expression in non-transfected: sc-117752 (A) and human FAM163A transfected: sc-175533 (B) 293T whole cell lysates.



FAM163A (G-12): sc-393821. Immunofluorescence staining of methanol-fixed HeLa cells showing cytoplasmic and membrane localization.

## STORAGE

Store at 4° C, \*\*DO NOT FREEZE\*\*. Stable for one year from the date of shipment. Non-hazardous. No MSDS required.

## RESEARCH USE

For research use only, not for use in diagnostic procedures.

## PROTOCOLS

See our web site at [www.scbt.com](http://www.scbt.com) for detailed protocols and support products.