

CYP3A43 (E-9): sc-393860

BACKGROUND

Chromosome 7 is about 158 million bases long, encodes over 1,000 genes and makes up about 5% of the human genome. Chromosome 7 has been linked to osteogenesis imperfecta, Pendred syndrome, lissencephaly, citrullinemia and Shwachman-Diamond syndrome. The deletion of a portion of the q arm of chromosome 7 is associated with Williams-Beuren syndrome, a condition characterized by mild mental retardation, an unusual comf and friendliness with strangers and an elfin appearance. Deletions of portions of the q arm of chromosome 7 are also seen in a number of myeloid disorders including cases of acute myelogenous leukemia and myelodysplasia.

REFERENCES

1. Tsipouras, P., et al. 1983. Restriction fragment length polymorphism associated with the pro α 2(I) gene of human type I procollagen. Application to a family with an autosomal dominant form of osteogenesis imperfecta. *J. Clin. Invest.* 72: 1262-1267.
2. Liang, H., et al. 1998. Molecular anatomy of chromosome 7q deletions in myeloid neoplasms: evidence for multiple critical loci. *Proc. Natl. Acad. Sci. USA* 95: 3781-3785.
3. Hillier, L.W., et al. 2003. The DNA sequence of human chromosome 7. *Nature* 424: 157-164.
4. Eckert, M.A., et al. 2006. The neurobiology of Williams syndrome: cascading influences of visual system impairment? *Cell. Mol. Life Sci.* 63: 1867-1875.
5. Osborne, L.R., et al. 2006. Williams-Beuren syndrome diagnosis using fluorescence *in situ* hybridization. *Methods Mol. Med.* 126:113-128.

CHROMOSOMAL LOCATION

Genetic locus: CYP3A43 (human) mapping to 7q22.1.

SOURCE

CYP3A43 (E-9) is a mouse monoclonal antibody specific for an epitope mapping between amino acids 46-79 near the N-terminus of CYP3A43 of human origin.

PRODUCT

Each vial contains 200 μ g IgG_{2b} kappa light chain in 1.0 ml of PBS with < 0.1% sodium azide and 0.1% gelatin.

CYP3A43 (E-9) is available conjugated to agarose (sc-393860 AC), 500 μ g/0.25 ml agarose in 1 ml, for IP; to HRP (sc-393860 HRP), 200 μ g/ml, for WB, IHC(P) and ELISA; to either phycoerythrin (sc-393860 PE), fluorescein (sc-393860 FITC), Alexa Fluor® 488 (sc-393860 AF488), Alexa Fluor® 546 (sc-393860 AF546), Alexa Fluor® 594 (sc-393860 AF594) or Alexa Fluor® 647 (sc-393860 AF647), 200 μ g/ml, for WB (RGB), IF, IHC(P) and FCM; and to either Alexa Fluor® 680 (sc-393860 AF680) or Alexa Fluor® 790 (sc-393860 AF790), 200 μ g/ml, for Near-Infrared (NIR) WB, IF and FCM.

Blocking peptide available for competition studies, sc-393860 P, (100 μ g peptide in 0.5 ml PBS containing < 0.1% sodium azide and 0.2% stabilizer protein).

Alexa Fluor® is a trademark of Molecular Probes, Inc., Oregon, USA

APPLICATIONS

CYP3A43 (E-9) is recommended for detection of CYP3A43 of human origin by Western Blotting (starting dilution 1:100, dilution range 1:100-1:1000), immunoprecipitation [1-2 μ g per 100-500 μ g of total protein (1 ml of cell lysate)], immunofluorescence (starting dilution 1:50, dilution range 1:50-1:500), immunohistochemistry (including paraffin-embedded sections) (starting dilution 1:50, dilution range 1:50-1:500) and solid phase ELISA (starting dilution 1:30, dilution range 1:30-1:3000).

Suitable for use as control antibody for CYP3A43 siRNA (h): sc-105258, CYP3A43 shRNA Plasmid (h): sc-105258-SH and CYP3A43 shRNA (h) Lentiviral Particles: sc-105258-V.

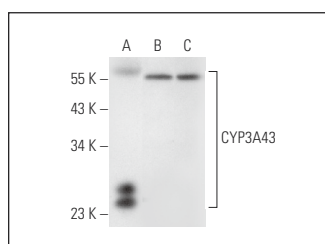
Molecular Weight of CYP3A43 isoforms: 58/58/48/28 kDa.

Positive Controls: LNCaP cell lysate: sc-2231, DU 145 cell lysate: sc-2268 or human prostate extract: sc-363774.

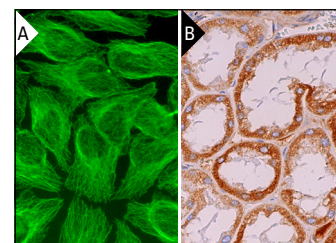
RECOMMENDED SUPPORT REAGENTS

To ensure optimal results, the following support reagents are recommended: 1) Western Blotting: use m-IgG κ BP-HRP: sc-516102 or m-IgG κ BP-HRP (Cruz Marker): sc-516102-CM (dilution range: 1:1000-1:10000), Cruz Marker™ Molecular Weight Standards: sc-2035, UltraCruz® Blocking Reagent: sc-516214 and Western Blotting Luminol Reagent: sc-2048. 2) Immunoprecipitation: use Protein A/G PLUS-Agarose: sc-2003 (0.5 ml agarose/2.0 ml). 3) Immunofluorescence: use m-IgG κ BP-FITC: sc-516140 or m-IgG κ BP-PE: sc-516141 (dilution range: 1:50-1:200) with UltraCruz® Mounting Medium: sc-24941 or UltraCruz® Hard-set Mounting Medium: sc-359850. 4) Immunohistochemistry: use m-IgG κ BP-HRP: sc-516102 with DAB, 50X: sc-24982 and Immunohistomount: sc-45086, or Organo/Limonene Mount: sc-45087.

DATA



CYP3A43 (E-9): sc-393860. Western blot analysis of CYP3A43 expression in human prostate tissue extract (A) and LNCaP (B) and DU 145 (C) whole cell lysates.



CYP3A43 (E-9): sc-393860. Immunofluorescence staining of methanol-fixed HeLa cells showing cytoplasmic and membrane localization (A). Immunoperoxidase staining of formalin fixed, paraffin-embedded human kidney tissue showing cytoplasmic staining of cells in tubules (B).

STORAGE

Store at 4° C, **DO NOT FREEZE**. Stable for one year from the date of shipment. Non-hazardous. No MSDS required.

RESEARCH USE

For research use only, not for use in diagnostic procedures.