

LECT2 (B-6): sc-398071

BACKGROUND

Leukocyte cell-derived chemotaxin 2 (LECT2) is a secreted protein with a neutrophil chemotactic activity. LECT2 is highly expressed in liver and shows diffuse immunostaining within the cytoplasm of hepatocytes. The LECT2 protein consists of 133 amino acids and three intramolecular disulfide bonds, and homologues of LECT2 have been widely identified in many vertebrates. LECT2 has a multifunctional role that extends from cell growth, differentiation, damage/repair process and carcinogenesis to autoimmune diseases. LECT2 expression is specifically induced in liver by β -catenin signaling. Serum LECT2 levels have been shown to increase in response to liver recovery, suggesting LECT2 may be used as a prognostic indicator.

REFERENCES

1. Kishimoto, H., et al. 1976. Anomalous origin of of a successful corrective surgery. *Nippon Kyobu Geka Gakkai Zasshi* 24: 1519-1527.
2. Yamagoe, S., et al. 1998. Molecular cloning, structural characterization, and chromosomal mapping of the human LECT2 gene. *Genomics* 48: 324-329.
3. Yamagoe, S., et al. 1998. The mouse *Lect2* gene: cloning of cDNA and genomic DNA, structural characterization and chromosomal localization. *Gene* 216: 171-178.

CHROMOSOMAL LOCATION

Genetic locus: LECT2 (human) mapping to 5q31.1; *Lect2* (mouse) mapping to 13 B1.

SOURCE

LECT2 (B-6) is a mouse monoclonal antibody specific for an epitope mapping between amino acids 48-75 near the N-terminus of LECT2 of human origin.

PRODUCT

Each vial contains 200 μ g IgG₁ kappa light chain in 1.0 ml of PBS with < 0.1% sodium azide and 0.1% gelatin.

LECT2 (B-6) is available conjugated to agarose (sc-398071 AC), 500 μ g/0.25 ml agarose in 1 ml, for IP; to HRP (sc-398071 HRP), 200 μ g/ml, for WB, IHC(P) and ELISA; to either phycoerythrin (sc-398071 PE), fluorescein (sc-398071 FITC), Alexa Fluor® 488 (sc-398071 AF488), Alexa Fluor® 546 (sc-398071 AF546), Alexa Fluor® 594 (sc-398071 AF594) or Alexa Fluor® 647 (sc-398071 AF647), 200 μ g/ml, for WB (RGB), IF, IHC(P) and FCM; and to either Alexa Fluor® 680 (sc-398071 AF680) or Alexa Fluor® 790 (sc-398071 AF790), 200 μ g/ml, for Near-Infrared (NIR) WB, IF and FCM.

Blocking peptide available for competition studies, sc-398071 P, (100 μ g peptide in 0.5 ml PBS containing < 0.1% sodium azide and 0.2% stabilizer protein).

Alexa Fluor® is a trademark of Molecular Probes, Inc., Oregon, USA

STORAGE

Store at 4° C, ****DO NOT FREEZE****. Stable for one year from the date of shipment. Non-hazardous. No MSDS required.

APPLICATIONS

LECT2 (B-6) is recommended for detection of mature LECT2 and LECT2 precursor of mouse, rat and human origin by Western Blotting (starting dilution 1:100, dilution range 1:100-1:1000), immunoprecipitation [1-2 μ g per 100-500 μ g of total protein (1 ml of cell lysate)], immunofluorescence (starting dilution 1:50, dilution range 1:50-1:500) and solid phase ELISA (starting dilution 1:30, dilution range 1:30-1:3000).

Suitable for use as control antibody for LECT2 siRNA (h): sc-60928, LECT2 siRNA (m): sc-60929, LECT2 shRNA Plasmid (h): sc-60928-SH, LECT2 shRNA Plasmid (m): sc-60929-SH, LECT2 shRNA (h) Lentiviral Particles: sc-60928-V and LECT2 shRNA (m) Lentiviral Particles: sc-60929-V.

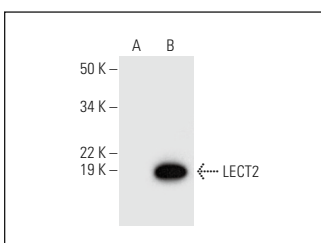
Molecular Weight of LECT2: 16 kDa.

Positive Controls: human LECT2 transfected HEK293T whole cell lysate.

RECOMMENDED SUPPORT REAGENTS

To ensure optimal results, the following support reagents are recommended: 1) Western Blotting: use m-IgG κ BP-HRP: sc-516102 or m-IgG κ BP-HRP (Cruz Marker): sc-516102-CM (dilution range: 1:1000-1:10000), Cruz Marker™ Molecular Weight Standards: sc-2035, UltraCruz® Blocking Reagent: sc-516214 and Western Blotting Luminol Reagent: sc-2048. 2) Immunoprecipitation: use Protein A/G PLUS-Agarose: sc-2003 (0.5 ml agarose/2.0 ml). 3) Immunofluorescence: use m-IgG κ BP-FITC: sc-516140 or m-IgG κ BP-PE: sc-516141 (dilution range: 1:50-1:200) with UltraCruz® Mounting Medium: sc-24941 or UltraCruz® Hard-set Mounting Medium: sc-359850.

DATA



LECT2 (B-6): sc-398071. Western blot analysis of LECT2 expression in non-transfected (A) and human LECT2 transfected (B) HEK293T whole cell lysates.

SELECT PRODUCT CITATIONS

1. Xu, H., et al. 2021. LECT2, a novel and direct biomarker of liver fibrosis in patients with CHB. *Front. Mol. Biosci.* 8: 749648.
2. Gao, Y., et al. 2023. β -catenin/TCF4 inhibitors ICG-001 and LF3 alleviate BDL-induced liver fibrosis by suppressing LECT2 signaling. *Chem. Biol. Interact.* 371: 110350.

RESEARCH USE

For research use only, not for use in diagnostic procedures.