

ICSBP (F-11): sc-398237

BACKGROUND

ICSBP (interferon (IFN) consensus sequence-binding protein, interferon regulatory factor 8; IRF-8) is a transcription factor that is important for IFN- γ -mediated signaling during dendritic cell and macrophage differentiation. ICSBP physically interacts with TRAF6 (between amino acid residues 356 and 305), and this interaction of ICSBP with TRAF6 modulates TLR signaling and may contribute to the cross-talk between IFN- γ and TLR signal pathways. ICSBP antagonizes Bcr/Abl by downregulation of Bcl-2. ICSBP is known to interact with chromatin, and bind PU.1 in macrophages. ICSBP belongs to the IFN regulatory factor (IRF) family that also includes IRF-1, IRF-2, and ISGF-3. These proteins are composed of a conserved DNA-binding domain in the N-terminal region and a divergent C-terminal region that serves as the regulatory domain. The IRF family proteins bind to the IFN-stimulated response element (ISRE) and regulate expression of IFN- α and IFN- β .

REFERENCES

1. Burchert, A., et al. 2004. Interferon consensus sequence binding protein (ICSBP; IRF-8) antagonizes Bcr/Abl and downregulates Bcl-2. *Blood* 103: 3480-3489.
2. Schmidt, M., et al. 2004. The interferon regulatory factor ICSBP/IRF-8 in combination with PU.1 upregulates expression of tumor suppressor p15^{Ink4b} in murine myeloid cells. *Blood* 103: 4142-4149.
3. Laricchia-Robbio, L., et al. 2005. Partner-regulated interaction of IFN regulatory factor 8 with chromatin visualized in live macrophages. *Proc. Natl. Acad. Sci. USA* 102: 14368-14373.
4. Xiong, H., et al. 2005. Ubiquitin-dependent degradation of interferon regulatory factor-8 mediated by Cbl downregulates interleukin-12 expression. *J. Biol. Chem.* 280: 23531-23539.
5. Tamura, T., et al. 2005. IFN regulatory factor-4 and -8 govern dendritic cell subset development and their functional diversity. *J. Immunol.* 174: 2573-2581.

CHROMOSOMAL LOCATION

Genetic locus: IRF8 (human) mapping to 16q24.1; Irf8 (mouse) mapping to 8 E1.

SOURCE

ICSBP (F-11) is a mouse monoclonal antibody specific for an epitope mapping between amino acids 248-269 within an internal region of ICSBP of mouse origin.

PRODUCT

Each vial contains 200 μ g IgG γ kappa light chain in 1.0 ml of PBS with < 0.1% sodium azide and 0.1% gelatin. Also available as TransCruz reagent for Gel Supershift and ChIP applications, sc-398237 X, 200 μ g/0.1 ml.

Blocking peptide available for competition studies, sc-398237 P, (100 μ g peptide in 0.5 ml PBS containing < 0.1% sodium azide and 0.2% stabilizer protein).

APPLICATIONS

ICSBP (F-11) is recommended for detection of ICSBP of mouse, rat and human origin by Western Blotting (starting dilution 1:100, dilution range 1:100-1:1000), immunoprecipitation [1-2 μ g per 100-500 μ g of total protein (1 ml of cell lysate)], immunofluorescence (starting dilution 1:50, dilution range 1:50-1:500) and solid phase ELISA (starting dilution 1:30, dilution range 1:30-1:3000).

Suitable for use as control antibody for ICSBP siRNA (h): sc-35630, ICSBP siRNA (m): sc-35631, ICSBP shRNA Plasmid (h): sc-35630-SH, ICSBP shRNA Plasmid (m): sc-35631-SH, ICSBP shRNA (h) Lentiviral Particles: sc-35630-V and ICSBP shRNA (m) Lentiviral Particles: sc-35631-V.

ICSBP (F-11) X TransCruz antibody is recommended for Gel Supershift and ChIP applications.

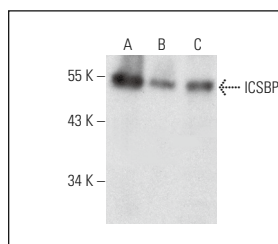
Molecular Weight of ICSBP: 48 kDa.

Positive Controls: M1 whole cell lysate: sc-364782, RAW 264.7 whole cell lysate: sc-2211 or mouse spleen extract: sc-2391.

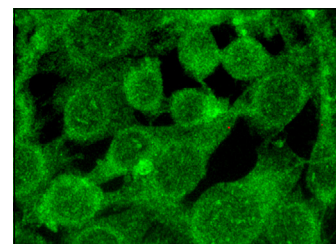
RECOMMENDED SUPPORT REAGENTS

To ensure optimal results, the following support reagents are recommended: 1) Western Blotting: use m-IgG κ BP-HRP: sc-516102 or m-IgG κ BP-HRP (Cruz Marker): sc-516102-CM (dilution range: 1:1000-1:10000), Cruz Marker™ Molecular Weight Standards: sc-2035, UltraCruz® Blocking Reagent: sc-516214 and Western Blotting Luminol Reagent: sc-2048. 2) Immunoprecipitation: use Protein A/G PLUS-Agarose: sc-2003 (0.5 ml agarose/2.0 ml). 3) Immunofluorescence: use m-IgG κ BP-FITC: sc-516140 or m-IgG κ BP-PE: sc-516141 (dilution range: 1:50-1:200) with UltraCruz® Mounting Medium: sc-24941 or UltraCruz® Hard-set Mounting Medium: sc-359850.

DATA



ICSBP (F-11): sc-398237. Western blot analysis of ICSBP expression in M1 (A) and RAW 264.7 (B) whole cell lysates and mouse spleen tissue extract (C).



ICSBP (F-11): sc-398237. Immunofluorescence staining of methanol-fixed NIH/3T3 cells showing nuclear and cytoplasmic localization.

STORAGE

Store at 4° C, **DO NOT FREEZE**. Stable for one year from the date of shipment. Non-hazardous. No MSDS required.

RESEARCH USE

For research use only, not for use in diagnostic procedures.