

FIGNL1 (A-4): sc-398264

BACKGROUND

FIGNL1 (fidgetin-like 1) is a 674 amino acid protein belonging to the AAA ATPase family. FIGNL1 exists as a hexamer that undergoes alternative splicing to produce two isoforms. FIGNL1 utilizes magnesium as a cofactor and is phosphorylated upon DNA damage, probably by ATM or ATR. FIGNL1 is suggested to regulate osteoblast proliferation and differentiation. FIGNL1 is encoded by a gene located on human chromosome 7, which consists about 158 million bases, encodes over 1,000 genes and makes up about 5% of the human genome. Chromosome 7 has been linked to osteogenesis imperfecta, Pendred syndrome, lissencephaly, citrullinemia and Shwachman-Diamond syndrome. The deletion of a portion of the q arm of chromosome 7 is associated with Williams-Beuren syndrome, a condition characterized by mild mental retardation, an unusual comfort and friendliness with strangers and an elfin appearance. Deletions of portions of the q arm of chromosome 7 are also seen in a number of myeloid disorders including cases of acute myelogenous leukemia and myelodysplasia.

REFERENCES

1. Tsipouras, P., et al. 1983. Restriction fragment length polymorphism associated with the proc α 2(I) gene of human type I procollagen. Application to a family with an autosomal dominant form of osteogenesis imperfecta. *J. Clin. Invest.* 72: 1262-1267.
2. Liang, H., et al. 1998. Molecular anatomy of chromosome 7q deletions in myeloid neoplasms: evidence for multiple critical loci. *Proc. Natl. Acad. Sci. USA* 95: 3781-3785.
3. Mayer, H., et al. 2001. Molecular cloning, characterization, and tissue-specific expression of human LANCL2, a novel member of the LanC-like protein family. *DNA Seq.* 12: 161-166.

CHROMOSOMAL LOCATION

Genetic locus: FIGNL1 (human) mapping to 7p12.1; Fignl1 (mouse) mapping to 11 A1.

SOURCE

FIGNL1 (A-4) is a mouse monoclonal antibody raised against amino acids 378-423 mapping within an internal region of FIGNL1 of human origin.

PRODUCT

Each vial contains 200 μ g IgG_{2a} kappa light chain in 1.0 ml of PBS with < 0.1% sodium azide and 0.1% gelatin.

FIGNL1 (A-4) is available conjugated to agarose (sc-398264 AC), 500 μ g/0.25 ml agarose in 1 ml, for IP; to HRP (sc-398264 HRP), 200 μ g/ml, for WB, IHC(P) and ELISA; to either phycoerythrin (sc-398264 PE), fluorescein (sc-398264 FITC), Alexa Fluor[®] 488 (sc-398264 AF488), Alexa Fluor[®] 546 (sc-398264 AF546), Alexa Fluor[®] 594 (sc-398264 AF594) or Alexa Fluor[®] 647 (sc-398264 AF647), 200 μ g/ml, for WB (RGB), IF, IHC(P) and FCM; and to either Alexa Fluor[®] 680 (sc-398264 AF680) or Alexa Fluor[®] 790 (sc-398264 AF790), 200 μ g/ml, for Near-Infrared (NIR) WB, IF and FCM.

Alexa Fluor[®] is a trademark of Molecular Probes, Inc., Oregon, USA

APPLICATIONS

FIGNL1 (A-4) is recommended for detection of FIGNL1 of mouse, rat and human origin by Western Blotting (starting dilution 1:100, dilution range 1:100-1:1000), immunoprecipitation [1-2 μ g per 100-500 μ g of total protein (1 ml of cell lysate)], immunofluorescence (starting dilution 1:50, dilution range 1:50-1:500) and solid phase ELISA (starting dilution 1:30, dilution range 1:30-1:3000).

Suitable for use as control antibody for FIGNL1 siRNA (h): sc-89427, FIGNL1 siRNA (m): sc-145181, FIGNL1 shRNA Plasmid (h): sc-89427-SH, FIGNL1 shRNA Plasmid (m): sc-145181-SH, FIGNL1 shRNA (h) Lentiviral Particles: sc-89427-V and FIGNL1 shRNA (m) Lentiviral Particles: sc-145181-V.

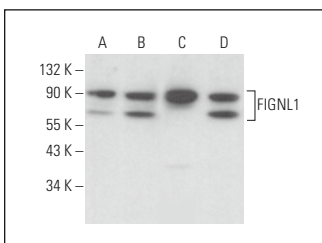
Molecular Weight of FIGNL1 isoforms 1/2: 74/62 kDa.

Positive Controls: HeLa whole cell lysate: sc-2200, Jurkat whole cell lysate: sc-2204 or NIH/3T3 whole cell lysate: sc-2210.

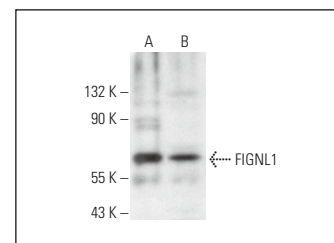
RECOMMENDED SUPPORT REAGENTS

To ensure optimal results, the following support reagents are recommended: 1) Western Blotting: use m-IgG κ BP-HRP: sc-516102 or m-IgG κ BP-HRP (Cruz Marker): sc-516102-CM (dilution range: 1:1000-1:10000), Cruz Marker[™] Molecular Weight Standards: sc-2035, UltraCruz[®] Blocking Reagent: sc-516214 and Western Blotting Luminol Reagent: sc-2048. 2) Immunoprecipitation: use Protein A/G PLUS-Agarose: sc-2003 (0.5 ml agarose/2.0 ml). 3) Immunofluorescence: use m-IgG κ BP-FITC: sc-516140 or m-IgG κ BP-PE: sc-516141 (dilution range: 1:50-1:200) with UltraCruz[®] Mounting Medium: sc-24941 or UltraCruz[®] Hard-set Mounting Medium: sc-359850.

DATA



FIGNL1 (A-4): sc-398264. Western blot analysis of FIGNL1 expression in MIA PaCa-2 (A), Jurkat (B), 3T3-L1 (C) and C3H/10T1/2 (D) whole cell lysates.



FIGNL1 (A-4): sc-398264. Western blot analysis of FIGNL1 expression in HeLa (A) and NIH/3T3 (B) whole cell lysates.

STORAGE

Store at 4° C, **DO NOT FREEZE**. Stable for one year from the date of shipment. Non-hazardous. No MSDS required.

RESEARCH USE

For research use only, not for use in diagnostic procedures.

PROTOCOLS

See our web site at www.scbt.com for detailed protocols and support products.