

CCDC180 (G-10): sc-398312

BACKGROUND

Chromosome 9 consists of about 145 million bases and 4% of the human genome and encodes nearly 900 genes. Considered to play a role in gender determination, deletion of the distal portion of 9p can lead to development of male to female sex reversal, the phenotype of a female with a male X,Y genotype. Hereditary hemorrhagic telangiectasia, which is characterized by harmful vascular defects, is associated with the chromosome 9 gene encoding Endoglin protein, ENG. Familial dysautonomia is also associated with chromosome 9 though through the gene IKBKAP. Notably, chromosome 9 encompasses the largest interferon family gene cluster. Chromosome 9 is partnered with chromosome 22 in the translocation leading to the aberrant production of Bcr-Abl fusion protein often found in leukemias.

REFERENCES

1. Humphray, S.J., et al. 2004. DNA sequence and analysis of human chromosome 9. *Nature* 429: 369-374.
2. Coppo, P., et al. 2006. Bcr-Abl activates STAT3 via JAK and MEK pathways in human cells. *Br. J. Haematol.* 134: 171-179.
3. Zheng, X., et al. 2006. Bcr and its mutants, the reciprocal t(9;22)-associated Abl/Bcr fusion proteins, differentially regulate the cytoskeleton and cell motility. *BMC Cancer* 6: 262.
4. Burmeister, T., et al. 2007. Atypical Bcr-Abl mRNA transcripts in adult acute lymphoblastic leukemia. *Haematologica* 92: 1699-1702.
5. Cottin, V., et al. 2007. Pulmonary vascular manifestations of hereditary hemorrhagic telangiectasia (Rendu-Osler disease). *Respiration* 74: 361-378.
6. Fernandez-L, A., et al. 2007. Gene expression fingerprinting for human hereditary hemorrhagic telangiectasia. *Hum. Mol. Genet.* 16: 1515-1533.
7. Gardiner, J., et al. 2007. Potential role of Tubulin acetylation and microtubule-based protein trafficking in familial dysautonomia. *Traffic* 8: 1145-1149.
8. Hims, M.M., et al. 2007. A humanized IKBKAP transgenic mouse models a tissue-specific human splicing defect. *Genomics* 90: 389-396.

CHROMOSOMAL LOCATION

Genetic locus: CCDC180 (human) mapping to 9q22.33; Ccdc180 (mouse) mapping to 4 A1.

SOURCE

CCDC180 (G-10) is a mouse monoclonal antibody specific for an epitope mapping between amino acids 1-32 at the N-terminus of Ccdc180 of mouse origin.

PRODUCT

Each vial contains 200 µg IgM kappa light chain in 1.0 ml of PBS with < 0.1% sodium azide and 0.1% gelatin.

Blocking peptide available for competition studies, sc-398312 P, (100 µg peptide in 0.5 ml PBS containing < 0.1% sodium azide and 0.2% stabilizer protein).

APPLICATIONS

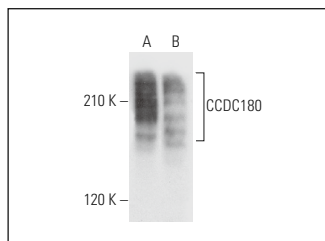
CCDC180 (G-10) is recommended for detection of CCDC180 of mouse, rat and human origin by Western Blotting (starting dilution 1:100, dilution range 1:100-1:1000), immunoprecipitation [1-2 µg per 100-500 µg of total protein (1 ml of cell lysate)], immunofluorescence (starting dilution 1:50, dilution range 1:50-1:500) and solid phase ELISA (starting dilution 1:30, dilution range 1:30-1:3000).

Positive Controls: NIH/3T3 whole cell lysate: sc-2210 or 3T3-L1 cell lysate: sc-2243.

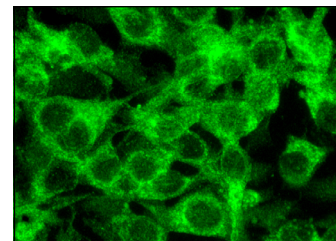
RECOMMENDED SUPPORT REAGENTS

To ensure optimal results, the following support reagents are recommended: 1) Western Blotting: use m-IgGκ BP-HRP: sc-516102 or m-IgGκ BP-HRP (Cruz Marker): sc-516102-CM (dilution range: 1:1000-1:10000), Cruz Marker™ Molecular Weight Standards: sc-2035, UltraCruz® Blocking Reagent: sc-516214 and Western Blotting Luminol Reagent: sc-2048. 2) Immunoprecipitation: use Protein L-Agarose: sc-2336 (0.5 ml agarose/2.0 ml). 3) Immunofluorescence: use m-IgGκ BP-FITC: sc-516140 or m-IgGκ BP-PE: sc-516141 (dilution range: 1:50-1:200) with UltraCruz® Mounting Medium: sc-24941 or UltraCruz® Hard-set Mounting Medium: sc-359850.

DATA



CCDC180 (G-10): sc-398312. Western blot analysis of CCDC180 expression in 3T3-L1 (A) and NIH/3T3 (B) whole cell lysates.



CCDC180 (G-10): sc-398312. Immunofluorescence staining of methanol-fixed NIH/3T3 cells showing cytoplasmic localization.

STORAGE

Store at 4° C, **DO NOT FREEZE**. Stable for one year from the date of shipment. Non-hazardous. No MSDS required.

RESEARCH USE

For research use only, not for use in diagnostic procedures.

PROTOCOLS

See our web site at www.scbt.com for detailed protocols and support products.