

# RSHL1 (C-9): sc-398317

## BACKGROUND

RSHL1 (radial spoke head-like protein 1), also known as RSPH6A (radial spoke head protein 6 homolog A), is a 717 amino acid protein that belongs to the flagellar radial spoke RSP4/6 family. The gene encoding RSHL1 maps to human chromosome 19q13.32. Consisting of around 63 million bases with over 1,400 genes, chromosome 19 makes up over 2% of human genomic DNA. Chromosome 19 includes a diversity of interesting genes and is recognized for having the greatest gene density of the human chromosomes. It is the genetic home for a number of immunoglobulin superfamily members including the killer cell and leukocyte Ig-like receptors, a number of ICAMs, the CEACAM and PSG families, and Fc $\alpha$  receptors. Key genes for eye color and hair color also map to chromosome 19. Peutz-Jeghers syndrome, spinocerebellar ataxia type 6, the stroke disorder CADASIL, hypercholesterolemia and Insulin-dependent diabetes have been linked to chromosome 19. Translocations with chromosome 19 and chromosome 14 can be seen in some lymphoproliferative disorders and typically involve the proto-oncogene Bcl3.

## REFERENCES

1. Olsen, A., et al. 1994. Gene organization of the pregnancy-specific glycoprotein region on human chromosome 19: assembly and analysis of a 700-kb cosmid contig spanning the region. *Genomics* 23: 659-668.
2. Teglund, S., et al. 1994. The pregnancy-specific glycoprotein (PSG) gene cluster on human chromosome 19: fine structure of the 11 PSG genes and identification of 6 new genes forming a third subgroup within the carcinoembryonic antigen (CEA) family. *Genomics* 23: 669-684.
3. Wang, L., et al. 2000. C-CAM1, a candidate tumor suppressor gene, is abnormally expressed in primary lung cancers. *Clin. Cancer Res.* 6: 2988-2993.

## CHROMOSOMAL LOCATION

Genetic locus: RSPH6A (human) mapping to 19q13.32; Rsph6a (mouse) mapping to 7 A3.

## SOURCE

RSHL1 (C-9) is a mouse monoclonal antibody raised against amino acids 51-199 mapping near the N-terminus of RSHL1 of human origin.

## PRODUCT

Each vial contains 200  $\mu$ g IgG $_1$  kappa light chain in 1.0 ml of PBS with < 0.1% sodium azide and 0.1% gelatin.

RSHL1 (C-9) is available conjugated to agarose (sc-398317 AC), 500  $\mu$ g/0.25 ml agarose in 1 ml, for IP; to HRP (sc-398317 HRP), 200  $\mu$ g/ml, for WB, IHC(P) and ELISA; to either phycoerythrin (sc-398317 PE), fluorescein (sc-398317 FITC), Alexa Fluor<sup>®</sup> 488 (sc-398317 AF488), Alexa Fluor<sup>®</sup> 546 (sc-398317 AF546), Alexa Fluor<sup>®</sup> 594 (sc-398317 AF594) or Alexa Fluor<sup>®</sup> 647 (sc-398317 AF647), 200  $\mu$ g/ml, for WB (RGB), IF, IHC(P) and FCM; and to either Alexa Fluor<sup>®</sup> 680 (sc-398317 AF680) or Alexa Fluor<sup>®</sup> 790 (sc-398317 AF790), 200  $\mu$ g/ml, for Near-Infrared (NIR) WB, IF and FCM.

Alexa Fluor<sup>®</sup> is a trademark of Molecular Probes, Inc., Oregon, USA

## APPLICATIONS

RSHL1 (C-9) is recommended for detection of RSHL1 of mouse, rat and human origin by Western Blotting (starting dilution 1:100, dilution range 1:100-1:1000), immunoprecipitation [1-2  $\mu$ g per 100-500  $\mu$ g of total protein (1 ml of cell lysate)], immunofluorescence (starting dilution 1:50, dilution range 1:50-1:500) and solid phase ELISA (starting dilution 1:30, dilution range 1:30-1:3000).

Suitable for use as control antibody for RSHL1 siRNA (h): sc-97641, RSHL1 siRNA (m): sc-153139, RSHL1 shRNA Plasmid (h): sc-97641-SH, RSHL1 shRNA Plasmid (m): sc-153139-SH, RSHL1 shRNA (h) Lentiviral Particles: sc-97641-V and RSHL1 shRNA (m) Lentiviral Particles: sc-153139-V.

Molecular Weight of RSHL1: 81 kDa.

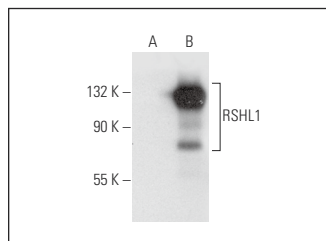
Positive Controls: RSHL1 (h): 293T Lysate: sc-129687 or TT whole cell lysate: sc-364195.

## RECOMMENDED SUPPORT REAGENTS

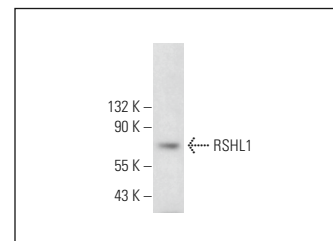
To ensure optimal results, the following support reagents are recommended:

- 1) Western Blotting: use m-IgG $\kappa$  BP-HRP: sc-516102 or m-IgG $\kappa$  BP-HRP (Cruz Marker): sc-516102-CM (dilution range: 1:1000-1:10000), Cruz Marker<sup>™</sup> Molecular Weight Standards: sc-2035, UltraCruz<sup>®</sup> Blocking Reagent: sc-516214 and Western Blotting Luminol Reagent: sc-2048.
- 2) Immunoprecipitation: use Protein A/G PLUS-Agarose: sc-2003 (0.5 ml agarose/2.0 ml).
- 3) Immunofluorescence: use m-IgG $\kappa$  BP-FITC: sc-516140 or m-IgG $\kappa$  BP-PE: sc-516141 (dilution range: 1:50-1:200) with UltraCruz<sup>®</sup> Mounting Medium: sc-24941 or UltraCruz<sup>®</sup> Hard-set Mounting Medium: sc-359850.

## DATA



RSHL1 (C-9): sc-398317. Western blot analysis of RSHL1 expression in non-transfected: sc-117752 (A) and human RSHL1 transfected: sc-129687 (B) 293T whole cell lysates.



RSHL1 (C-9): sc-398317. Western blot analysis of RSHL1 expression in TT whole cell lysate.

## STORAGE

Store at 4 $^{\circ}$  C, \*\*DO NOT FREEZE\*\*. Stable for one year from the date of shipment. Non-hazardous. No MSDS required.

## RESEARCH USE

For research use only, not for use in diagnostic procedures.

## PROTOCOLS

See our web site at [www.scbt.com](http://www.scbt.com) for detailed protocols and support products.