

ILRUN (F-8): sc-398380

BACKGROUND

Making up nearly 6% of the human genome, chromosome 6 contains around 1,200 genes within 170 million base pairs of sequence. Deletion of a portion of the q arm of chromosome 6 is associated with early onset intestinal cancer suggesting the presence of a cancer susceptibility locus. Porphyrria cutanea tarda is associated with chromosome 6 through the HFE gene which, when mutated, predisposes an individual to developing this porphyria. Notably, the PARK2 gene, which is associated with Parkinson's disease, and the genes encoding the major histocompatibility complex proteins, which are key molecular components of the immune system and determine predisposition to rheumatic diseases, are also located on chromosome 6. Stickler syndrome, 21-hydroxylase deficiency and maple syrup urine disease are also associated with genes on chromosome 6. A bipolar disorder susceptibility locus has been identified on the q arm of chromosome 6.

REFERENCES

1. Mungall, A.J., et al. 2003. The DNA sequence and analysis of human chromosome 6. *Nature* 425: 805-811.
2. Liu, Y., et al. 2009. Ablation of p120-catenin enhances invasion and metastasis of human lung cancer cells. *Cancer Sci.* 100: 441-448.
3. Liu, Y., et al. 2009. Abnormal expression of p120-catenin, E-cadherin, and small GTPases is significantly associated with malignant phenotype of human lung cancer. *Lung Cancer* 63: 375-382.
4. Wang, M., et al. 2009. Abnormal expression of p120-catenin and E-cadherin is significantly correlated with malignant phenotype of human lung cancer. *Zhongguo Fei Ai Za Zhi* 12: 306-311.

CHROMOSOMAL LOCATION

Genetic locus: ILRUN (human) mapping to 6p21.31; Ilrun (mouse) mapping to 17 A3.3.

SOURCE

ILRUN (F-8) is a mouse monoclonal antibody raised against amino acids 1-298 representing full length ILRUN of human origin.

PRODUCT

Each vial contains 200 µg IgG_{2b} kappa light chain in 1.0 ml of PBS with < 0.1% sodium azide and 0.1% gelatin.

ILRUN (F-8) is available conjugated to agarose (sc-398380 AC), 500 µg/0.25 ml agarose in 1 ml, for IP; to HRP (sc-398380 HRP), 200 µg/ml, for WB, IHC(P) and ELISA; to either phycoerythrin (sc-398380 PE), fluorescein (sc-398380 FITC), Alexa Fluor® 488 (sc-398380 AF488), Alexa Fluor® 546 (sc-398380 AF546), Alexa Fluor® 594 (sc-398380 AF594) or Alexa Fluor® 647 (sc-398380 AF647), 200 µg/ml, for WB (RGB), IF, IHC(P) and FCM; and to either Alexa Fluor® 680 (sc-398380 AF680) or Alexa Fluor® 790 (sc-398380 AF790), 200 µg/ml, for Near-Infrared (NIR) WB, IF and FCM.

STORAGE

Store at 4° C, **DO NOT FREEZE**. Stable for one year from the date of shipment. Non-hazardous. No MSDS required.

APPLICATIONS

ILRUN (F-8) is recommended for detection of ILRUN of mouse, rat and human origin by Western Blotting (starting dilution 1:100, dilution range 1:100-1:1000), immunoprecipitation [1-2 µg per 100-500 µg of total protein (1 ml of cell lysate)], immunofluorescence (starting dilution 1:50, dilution range 1:50-1:500) and solid phase ELISA (starting dilution 1:30, dilution range 1:30-1:3000).

Suitable for use as control antibody for ILRUN siRNA (h): sc-95499, ILRUN siRNA (m): sc-142795, ILRUN shRNA Plasmid (h): sc-95499-SH, ILRUN shRNA Plasmid (m): sc-142795-SH, ILRUN shRNA (h) Lentiviral Particles: sc-95499-V and ILRUN shRNA (m) Lentiviral Particles: sc-142795-V.

Molecular Weight of ILRUN: 33/26 kDa.

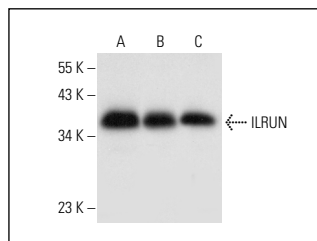
Positive Controls: HeLa whole cell lysate: sc-2200, MDA-MB-231 cell lysate: sc-2232 or Caki-1 cell lysate: sc-2224.

RECOMMENDED SUPPORT REAGENTS

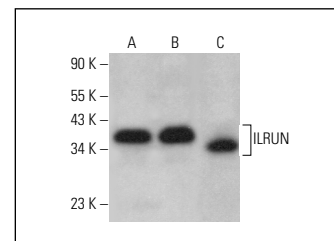
To ensure optimal results, the following support reagents are recommended:

- 1) Western Blotting: use m-IgGκ BP-HRP: sc-516102 or m-IgGκ BP-HRP (Cruz Marker): sc-516102-CM (dilution range: 1:1000-1:10000), Cruz Marker™ Molecular Weight Standards: sc-2035, UltraCruz® Blocking Reagent: sc-516214 and Western Blotting Luminol Reagent: sc-2048.
- 2) Immunoprecipitation: use Protein A/G PLUS-Agarose: sc-2003 (0.5 ml agarose/2.0 ml).
- 3) Immunofluorescence: use m-IgGκ BP-FITC: sc-516140 or m-IgGκ BP-PE: sc-516141 (dilution range: 1:50-1:200) with UltraCruz® Mounting Medium: sc-24941 or UltraCruz® Hard-set Mounting Medium: sc-359850.

DATA



ILRUN (F-8): sc-398380. Western blot analysis of ILRUN expression in HeLa (A), MDA-MB-231 (B) and Caki-1 (C) whole cell lysates.



ILRUN (F-8): sc-398380. Western blot analysis of ILRUN expression in MDA-MB-231 (A), Daudi (B) and NIH/3T3 (C) whole cell lysates.

SELECT PRODUCT CITATIONS

1. Zhang, X., et al. 2015. ILRUN enhances NSCLC cell invasion by upregulating vimentin, and downregulating E-cadherin and p120ctn. *Tumour Biol.* 36: 5979-5985.

RESEARCH USE

For research use only, not for use in diagnostic procedures.

Alexa Fluor® is a trademark of Molecular Probes, Inc., Oregon, USA