

# PSGL-1 (C-9): sc-398402

## BACKGROUND

PSGL-1 (P-Selectin glycoprotein ligand, also designated CD162), exists as a disulfide-linked homodimer. PSGL-1 is a type 1 membrane protein that localizes on the tips of microvilli of leukocytes. Its extracellular domain is rich in serines, threonines and prolines, and includes a series of 15 and 16 decameric repeats in HL-60 and U-937 cells, and human leukocytes, respectively. Although PSGL-1 appears to be the sole receptor for P-Selectin on human hematopoietic cells, it also interacts with E-Selectin through a unique binding site. In order to bind PSGL-1 to either E-Selectin or P-Selectin, PSGL-1 must be sialylated and fucosylated. PSGL-1 is a mucin-like molecule, much like leukosialin (CD43), CD164 and CD34. These proteins belong to an emerging family of cell adhesion receptors called sialomucins, which transduce negative signals in hematopoietic cells.

## REFERENCES

1. Moore, K., et al. 1992. Identification of a specific glycoprotein ligand for P-Selectin (CD62) on myeloid cells. *J. Biol. Chem.* 118: 445-456.
2. Sako, D., et al. 1993. Expression cloning of a functional glycoprotein ligand for P-Selectin. *Cell* 75: 1179-1186.
3. Veldman, G., et al. 1995. Genomic organization and chromosomal localization of the gene encoding human P-Selectin glycoprotein ligand. *J. Biol. Chem.* 7: 16470-16475.
4. Patel, K., et al. 1995. Neutrophils use both shared and distinct mechanisms to adhere to selectins under static and flow conditions. *J. Clin. Invest.* 96: 1887-1896.
5. Li, F., et al. 1996. Visualization of P-Selectin glycoprotein ligand-1 as a highly extended molecule and mapping of protein epitopes for monoclonal antibodies. *J. Biol. Chem.* 271: 6342-6348.
6. Levesque, J.P., et al. 1999. PSGL-1-mediated adhesion of human hematopoietic progenitors to P-Selectin results in suppression of hematopoiesis. *Immunity* 11: 369-378.

## CHROMOSOMAL LOCATION

Genetic locus: SELPLG (human) mapping to 12q24.11.

## SOURCE

PSGL-1 (C-9) is a mouse monoclonal antibody specific for an epitope mapping between amino acids 373-406 at the C-terminus of PSGL-1 of human origin.

## PRODUCT

Each vial contains 200 µg IgG<sub>2a</sub> kappa light chain in 1.0 ml of PBS with < 0.1% sodium azide and 0.1% gelatin.

Blocking peptide available for competition studies, sc-398402 P, (100 µg peptide in 0.5 ml PBS containing < 0.1% sodium azide and 0.2% stabilizer protein).

## STORAGE

Store at 4° C, **\*\*DO NOT FREEZE\*\***. Stable for one year from the date of shipment. Non-hazardous. No MSDS required.

## APPLICATIONS

PSGL-1 (C-9) is recommended for detection of PSGL-1 of human origin by Western Blotting (starting dilution 1:100, dilution range 1:100-1:1000), immunoprecipitation [1-2 µg per 100-500 µg of total protein (1 ml of cell lysate)], immunofluorescence (starting dilution 1:50, dilution range 1:50-1:500) and solid phase ELISA (starting dilution 1:30, dilution range 1:30-1:3000).

Suitable for use as control antibody for PSGL-1 siRNA (h): sc-36323, PSGL-1 shRNA Plasmid (h): sc-36323-SH and PSGL-1 shRNA (h) Lentiviral Particles: sc-36323-V.

Molecular Weight of PSGL-1 monomer: 120 kDa.

Molecular Weight of PSGL-1 homodimer: 240 kDa.

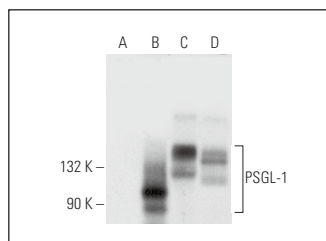
Positive Controls: CCRF-CEM cell lysate: sc-2225, AML-193 whole cell lysate: sc-364182 or PSGL-1 (h): 293T Lysate: sc-114271.

## RECOMMENDED SUPPORT REAGENTS

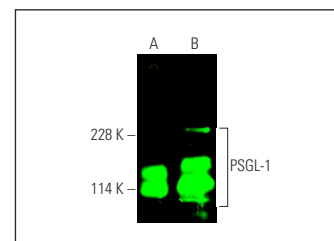
To ensure optimal results, the following support reagents are recommended:

- 1) Western Blotting: use m-IgGκ BP-HRP: sc-516102 or m-IgGκ BP-HRP (Cruz Marker): sc-516102-CM (dilution range: 1:1000-1:10000), Cruz Marker™ Molecular Weight Standards: sc-2035, UltraCruz® Blocking Reagent: sc-516214 and Western Blotting Luminol Reagent: sc-2048.
- 2) Immunoprecipitation: use Protein A/G PLUS-Agarose: sc-2003 (0.5 ml agarose/2.0 ml).
- 3) Immunofluorescence: use m-IgGκ BP-FITC: sc-516140 or m-IgGκ BP-PE: sc-516141 (dilution range: 1:50-1:200) with UltraCruz® Mounting Medium: sc-24941 or UltraCruz® Hard-set Mounting Medium: sc-359850.

## DATA



PSGL-1 (C-9): sc-398402. Western blot analysis of PSGL-1 expression in non-transfected 293T: sc-117752 (A), human PSGL-1 transfected 293T: sc-114271 (B), AML-193 (C) and CCRF-CEM (D) whole cell lysates.



PSGL-1 (C-9): sc-398402. Near-infrared western blot analysis of PSGL-1 expression in AML-193 (A) and Jurkat (B) whole cell lysates. Blocked with UltraCruz® Blocking Reagent: sc-516214. Detection reagent used: m-IgGκ BP-CFL 680: sc-516180.

## RESEARCH USE

For research use only, not for use in diagnostic procedures.



See **PSGL-1 (KPL1): sc-13535** for PSGL-1 antibody conjugates, including AC, HRP, FITC, PE, and Alexa Fluor® 488, 546, 594, 647, 680 and 790.