

# CLEC-16A (H-4): sc-398516

## BACKGROUND

The human  $\beta$ -glucan protein (Dectin-1) is a small, type II transmembrane receptor that enables  $\beta$ -glucan-dependent, nonopsonic recognition of zymosan and other yeast-derived particles by primary macrophages. Dectin-1 is expressed in dendritic cells, and is the human homologue of the C-type (calcium dependent) lectin-like receptor (CLEC) family that plays an important role in regulating innate immunity. CLEC-16A (C-type lectin domain family 16, member A), also known as Gop-1, is a 1,053 amino acid member of the CLEC family and is expressed in dendritic cells, immune cells, B lymphocytes and natural killer cells. Defects in the gene encoding CLEC-16A are associated with Insulin-dependent diabetes mellitus (IDDM) (also known as type I diabetes) and primary adrenal insufficiency. Multiple isoforms of CLEC-16A exist due to alternative splicing events.

## REFERENCES

- Nagase, T., Ishikawa, K., Nakajima, D., Ohira, M., Seki, N., Miyajima, N., Tanaka, A., Kotani, H., Nomura, N. and Ohara, O. 1997. Prediction of the coding sequences of unidentified human genes. VII. The complete sequences of 100 new cDNA clones from brain which can code for large proteins *in vitro*. DNA Res. 4: 141-150.
- Nakajima, D., Okazaki, N., Yamakawa, H., Kikuno, R., Ohara, O. and Nagase, T. 2002. Construction of expression-ready cDNA clones for KIAA genes: manual curation of 330 KIAA cDNA clones. DNA Res. 9: 99-106.
- Online Mendelian Inheritance in Man, OMIM<sup>™</sup>. 2002. Johns Hopkins University, Baltimore, MD. MIM Number: 611303. World Wide Web URL: <http://www.ncbi.nlm.nih.gov/omim/>
- Hakonarson, H., Grant, S.F., Bradfield, J.P., Marchand, L., Kim, C.E., Glessner, J.T., Grabs, R., Casalunovo, T., Taback, S.P., Frackelton, E.C., Lawson, M.L., Robinson, L.J., Skraban, R., Lu, Y., Chiavacci, R.M., et al. 2007. A genome-wide association study identifies KIAA0350 as a type 1 diabetes gene. Nature 448: 591-594.
- Skinningsrud, B., Husebye, E.S., Pearce, S.H., McDonald, D.O., Brandal, K., Wolff, A.B., Lovas, K., Egeland, T. and Undlien, D.E. 2008. Polymorphisms in CLEC-16A and CIITA at 16p13 are associated with primary adrenal insufficiency. J. Clin. Endocrinol. Metab. 93: 3310-3317.

## CHROMOSOMAL LOCATION

Genetic locus: CLEC16A (human) mapping to 16p13.13; Clec16a (mouse) mapping to 16 A1.

## SOURCE

CLEC-16A (H-4) is a mouse monoclonal antibody raised against amino acids 61-360 mapping near the N-terminus of CLEC-16A of human origin.

## PRODUCT

Each vial contains 200  $\mu$ g IgM kappa light chain in 1.0 ml of PBS with < 0.1% sodium azide and 0.1% gelatin.

## RESEARCH USE

For research use only, not for use in diagnostic procedures.

## APPLICATIONS

CLEC-16A (H-4) is recommended for detection of CLEC-16A of mouse, rat and human origin by Western Blotting (starting dilution 1:100, dilution range 1:100-1:1000), immunoprecipitation [1-2  $\mu$ g per 100-500  $\mu$ g of total protein (1 ml of cell lysate)], immunofluorescence (starting dilution 1:50, dilution range 1:50-1:500) and solid phase ELISA (starting dilution 1:30, dilution range 1:30-1:3000).

Suitable for use as control antibody for CLEC-16A siRNA (h): sc-93056, CLEC-16A siRNA (m): sc-142379, CLEC-16A shRNA Plasmid (h): sc-93056-SH, CLEC-16A shRNA Plasmid (m): sc-142379-SH, CLEC-16A shRNA (h) Lentiviral Particles: sc-93056-V and CLEC-16A shRNA (m) Lentiviral Particles: sc-142379-V.

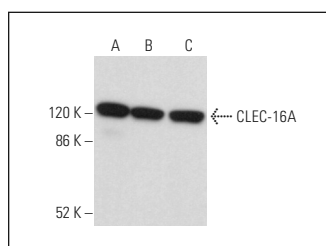
Molecular Weight of CLEC-16A: 118 kDa.

Positive Controls: NK-92 whole cell lysate: sc-364788, MCF7 whole cell lysate: sc-2206 or BJAB whole cell lysate: sc-2207.

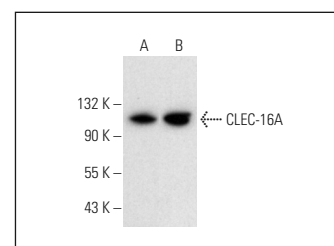
## RECOMMENDED SUPPORT REAGENTS

To ensure optimal results, the following support reagents are recommended: 1) Western Blotting: use m-IgG $\kappa$  BP-HRP: sc-516102 or m-IgG $\kappa$  BP-HRP (Cruz Marker): sc-516102-CM (dilution range: 1:1000-1:10000), Cruz Marker<sup>™</sup> Molecular Weight Standards: sc-2035, UltraCruz<sup>®</sup> Blocking Reagent: sc-516214 and Western Blotting Luminol Reagent: sc-2048. 2) Immunoprecipitation: use Protein L-Agarose: sc-2336 (0.5 ml agarose/2.0 ml). 3) Immunofluorescence: use m-IgG $\kappa$  BP-FITC: sc-516140 or m-IgG $\kappa$  BP-PE: sc-516141 (dilution range: 1:50-1:200) with UltraCruz<sup>®</sup> Mounting Medium: sc-24941 or UltraCruz<sup>®</sup> Hard-set Mounting Medium: sc-359850.

## DATA



CLEC-16A (H-4): sc-398516. Western blot analysis of CLEC-16A expression in BJAB (A), HL-60 (B) and MCF7 (C) whole cell lysates.



CLEC-16A (H-4): sc-398516. Western blot analysis of CLEC-16A expression in NK-92 (A) and BJAB (B) whole cell lysates.

## STORAGE

Store at 4° C, **\*\*DO NOT FREEZE\*\***. Stable for one year from the date of shipment. Non-hazardous. No MSDS required.

## PROTOCOLS

See our web site at [www.scbt.com](http://www.scbt.com) for detailed protocols and support products.