

YIPF2 (A-10): sc-398530

BACKGROUND

The YIP1 family consists of a group of small membrane proteins that bind Rab GTPases and function in membrane trafficking and vesicle biogenesis. YIPF2 (YIP1 family member 2), also known as FinGER2, is a 316 amino acid multi-pass membrane protein belonging to the YIP1 family. YIPF2 is encoded by a gene located on human chromosome 19, which consists of over 63 million bases, houses approximately 1,400 genes and is recognized for having the greatest gene density of the human chromosomes. It is the genetic home for a number of immunoglobulin (Ig) superfamily members, including the killer cell and leukocyte Ig-like receptors, a number of ICAMs, the CEACAM and PSG family and Fc receptors (FcRs).

REFERENCES

- Olsen, A., et al. 1994. Gene organization of the pregnancy-specific glycoprotein region on human chromosome 19: assembly and analysis of a 700-kb cosmid contig spanning the region. *Genomics* 23: 659-668.
- Teglund, S., et al. 1994. The pregnancy-specific glycoprotein (PSG) gene cluster on human chromosome 19: fine structure of the 11 PSG genes and identification of 6 new genes forming a third subgroup within the carcinoembryonic antigen (CEA) family. *Genomics* 23: 669-684.
- Wang, L., et al. 2000. CEACAM1, a candidate tumor suppressor gene, is abnormally expressed in primary lung cancers. *Clin. Cancer Res.* 6: 2988-2993.

CHROMOSOMAL LOCATION

Genetic locus: YIPF2 (human) mapping to 19p13.2; Yipf2 (mouse) mapping to 9 A3.

SOURCE

YIPF2 (A-10) is a mouse monoclonal antibody specific for an epitope mapping between amino acids 21-38 within an N-terminal cytoplasmic domain of YIPF2 of human origin.

PRODUCT

Each vial contains 200 µg IgG_{2a} kappa light chain in 1.0 ml of PBS with < 0.1% sodium azide and 0.1% gelatin.

YIPF2 (A-10) is available conjugated to agarose (sc-398530 AC), 500 µg/0.25 ml agarose in 1 ml, for IP; to HRP (sc-398530 HRP), 200 µg/ml, for WB, IHC(P) and ELISA; to either phycoerythrin (sc-398530 PE), fluorescein (sc-398530 FITC), Alexa Fluor® 488 (sc-398530 AF488), Alexa Fluor® 546 (sc-398530 AF546), Alexa Fluor® 594 (sc-398530 AF594) or Alexa Fluor® 647 (sc-398530 AF647), 200 µg/ml, for WB (RGB), IF, IHC(P) and FCM; and to either Alexa Fluor® 680 (sc-398530 AF680) or Alexa Fluor® 790 (sc-398530 AF790), 200 µg/ml, for Near-Infrared (NIR) WB, IF and FCM.

Blocking peptide available for competition studies, sc-398530 P, (100 µg peptide in 0.5 ml PBS containing < 0.1% sodium azide and 0.2% stabilizer protein).

RESEARCH USE

For research use only, not for use in diagnostic procedures.

APPLICATIONS

YIPF2 (A-10) is recommended for detection of YIPF2 of mouse, rat and human origin by Western Blotting (starting dilution 1:100, dilution range 1:100-1:1000), immunoprecipitation [1-2 µg per 100-500 µg of total protein (1 ml of cell lysate)], immunofluorescence (starting dilution 1:50, dilution range 1:50-1:500) and solid phase ELISA (starting dilution 1:30, dilution range 1:30-1:3000).

Suitable for use as control antibody for YIPF2 siRNA (h): sc-97660, YIPF2 siRNA (m): sc-155405, YIPF2 shRNA Plasmid (h): sc-97660-SH, YIPF2 shRNA Plasmid (m): sc-155405-SH, YIPF2 shRNA (h) Lentiviral Particles: sc-97660-V and YIPF2 shRNA (m) Lentiviral Particles: sc-155405-V.

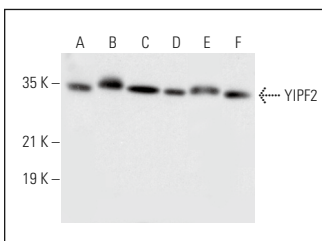
Molecular Weight of YIPF2: 35 kDa.

Positive Controls: human kidney extract: sc-363764, human bladder extract: sc-363751 or human liver extract: sc-363766.

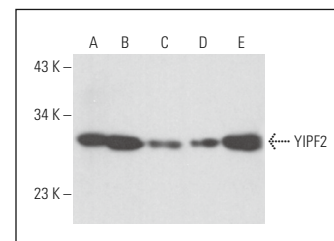
RECOMMENDED SUPPORT REAGENTS

To ensure optimal results, the following support reagents are recommended: 1) Western Blotting: use m-IgGκ BP-HRP: sc-516102 or m-IgGκ BP-HRP (Cruz Marker): sc-516102-CM (dilution range: 1:1000-1:10000), Cruz Marker™ Molecular Weight Standards: sc-2035, UltraCruz® Blocking Reagent: sc-516214 and Western Blotting Luminol Reagent: sc-2048. 2) Immunoprecipitation: use Protein A/G PLUS-Agarose: sc-2003 (0.5 ml agarose/2.0 ml). 3) Immunofluorescence: use m-IgGκ BP-FITC: sc-516140 or m-IgGκ BP-PE: sc-516141 (dilution range: 1:50-1:200) with UltraCruz® Mounting Medium: sc-24941 or UltraCruz® Hard-set Mounting Medium: sc-359850.

DATA



YIPF2 (A-10): sc-398530. Western blot analysis of YIPF2 expression in human liver (A), human tonsil (B), human kidney (C), human bladder (D), human brain (E) and human lung (F) tissue extracts.



YIPF2 (A-10): sc-398530. Western blot analysis of YIPF2 expression in human kidney tissue extract (A) and Caki-1 (B), Saos-2 (C), 3T3-L1 (D) and M1 (E) whole cell lysates.

SELECT PRODUCT CITATIONS

- Nordgaard, C., et al. 2021. Regulation of the Golgi apparatus by p38 and JNK kinases during cellular stress responses. *Int. J. Mol. Sci.* 22: 9595.

STORAGE

Store at 4° C, **DO NOT FREEZE**. Stable for one year from the date of shipment. Non-hazardous. No MSDS required.

Alexa Fluor® is a trademark of Molecular Probes, Inc., Oregon, USA