

BABAM1 (H-10): sc-398570

BACKGROUND

Consisting of around 63 million bases with over 1,400 genes, chromosome 19 makes up over 2% of human genomic DNA. Chromosome 19 includes a diversity of interesting genes and is recognized for having the greatest gene density of the human chromosomes. It is the genetic home for a number of immunoglobulin superfamily members including the killer cell and leukocyte Ig-like receptors, a number of ICAMs, the CEACAM and PSG family, and Fc α receptors. Key genes for eye color and hair color also map to chromosome 19. Peutz-Jeghers syndrome, spinocerebellar ataxia type 6, the stroke disorder CADASIL, hypercholesterolemia and Insulin-dependent diabetes have been linked to chromosome 19. Translocations with chromosome 19 and chromosome 14 can be seen in some lymphoproliferative disorders and typically involve the proto-oncogene Bcl-3.

REFERENCES

- Zimmermann, W., et al. 1988. Chromosomal localization of the carcinoembryonic antigen gene family and differential expression in various tumors. *Cancer Res.* 48: 2550-2554.
- LaPoint, S.F., et al. 2000. Cerebral autosomal dominant arteriopathy with subcortical infarcts and leukoencephalopathy (CADASIL). *Adv. Anat. Pathol.* 7: 307-321.
- Trettel, F., et al. 2000. A fine physical map of the CACNA1A gene region on 19p13.1-p13.2 chromosome. *Gene* 241: 45-50.
- Buchet-Poyau, K., et al. 2002. Search for the second Peutz-Jeghers syndrome locus: exclusion of the STK13, PRKCG, KLK10, and PSCD2 genes on chromosome 19 and the STK11P gene on chromosome 2. *Cytogenet. Genome Res.* 97: 171-178.
- Moodie, S.J., et al. 2002. Analysis of candidate genes on chromosome 19 in coeliac disease: an association study of the KIR and LILR gene clusters. *Eur. J. Immunogenet.* 29: 287-291.

CHROMOSOMAL LOCATION

Genetic locus: BABAM1 (human) mapping to 19p13.11; Babam1 (mouse) mapping to 8 B3.3.

SOURCE

BABAM1 (H-10) is a mouse monoclonal antibody raised against amino acids 191-235 mapping near the C-terminus of BABAM1 of human origin.

PRODUCT

Each vial contains 200 μ g IgG $_1$ kappa light chain in 1.0 ml of PBS with < 0.1% sodium azide and 0.1% gelatin.

BABAM1 (H-10) is available conjugated to agarose (sc-398570 AC), 500 μ g/0.25 ml agarose in 1 ml, for IP; to HRP (sc-398570 HRP), 200 μ g/ml, for WB, IHC(P) and ELISA; to either phycoerythrin (sc-398570 PE), fluorescein (sc-398570 FITC), Alexa Fluor[®] 488 (sc-398570 AF488), Alexa Fluor[®] 546 (sc-398570 AF546), Alexa Fluor[®] 594 (sc-398570 AF594) or Alexa Fluor[®] 647 (sc-398570 AF647), 200 μ g/ml, for WB (RGB), IF, IHC(P) and FCM; and to either Alexa Fluor[®] 680 (sc-398570 AF680) or Alexa Fluor[®] 790 (sc-398570 AF790), 200 μ g/ml, for Near-Infrared (NIR) WB, IF and FCM.

APPLICATIONS

BABAM1 (H-10) is recommended for detection of BABAM1 of mouse, rat and human origin by Western Blotting (starting dilution 1:100, dilution range 1:100-1:1000), immunoprecipitation [1-2 μ g per 100-500 μ g of total protein (1 ml of cell lysate)], immunofluorescence (starting dilution 1:50, dilution range 1:50-1:500) and solid phase ELISA (starting dilution 1:30, dilution range 1:30-1:3000).

Suitable for use as control antibody for BABAM1 siRNA (h): sc-97426, BABAM1 siRNA (m): sc-140368, BABAM1 shRNA Plasmid (h): sc-97426-SH, BABAM1 shRNA Plasmid (m): sc-140368-SH, BABAM1 shRNA (h) Lentiviral Particles: sc-97426-V and BABAM1 shRNA (m) Lentiviral Particles: sc-140368-V.

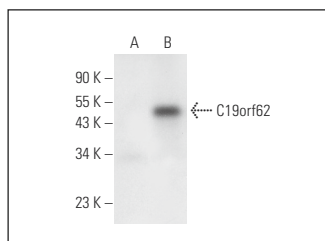
Molecular Weight of BABAM1: 40 kDa.

Positive Controls: BABAM1 (h3): 293T Lysate: sc-128160.

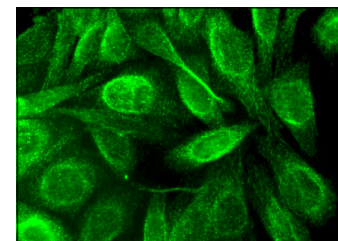
RECOMMENDED SUPPORT REAGENTS

To ensure optimal results, the following support reagents are recommended: 1) Western Blotting: use m-IgG κ BP-HRP: sc-516102 or m-IgG κ BP-HRP (Cruz Marker): sc-516102-CM (dilution range: 1:1000-1:10000), Cruz Marker[™] Molecular Weight Standards: sc-2035, UltraCruz[®] Blocking Reagent: sc-516214 and Western Blotting Luminol Reagent: sc-2048. 2) Immunoprecipitation: use Protein A/G PLUS-Agarose: sc-2003 (0.5 ml agarose/2.0 ml). 3) Immunofluorescence: use m-IgG κ BP-FITC: sc-516140 or m-IgG κ BP-PE: sc-516141 (dilution range: 1:50-1:200) with UltraCruz[®] Mounting Medium: sc-24941 or UltraCruz[®] Hard-set Mounting Medium: sc-359850.

DATA



C19orf62 (H-10): sc-398570. Western blot analysis of C19orf62 expression in non-transfected: sc-117752 (A) and human C19orf62 transfected: sc-128160 (B) 293T whole cell lysates.



BABAM1 (H-10): sc-398570. Immunofluorescence staining of formalin-fixed SW480 cells showing cytoplasmic and nuclear localization.

STORAGE

Store at 4 $^{\circ}$ C, **DO NOT FREEZE**. Stable for one year from the date of shipment. Non-hazardous. No MSDS required.

RESEARCH USE

For research use only, not for use in diagnostic procedures.

Alexa Fluor[®] is a trademark of Molecular Probes, Inc., Oregon, USA