

APCDD1L (F-5): sc-398858

BACKGROUND

APCDD1 (adenomatosis polyposis coli down-regulated 1), also known as B7323, DRAPC1 or FP7019, is a 514 amino acid single-pass type I membrane protein whose transcription is regulated by the β -catenin/ITF-2 complex. Expressed in high levels in ovary, heart, pancreas and prostate, with lower levels in spleen, lung, kidney, liver and colon, APCDD1 is thought to function as a developmental target of the β -catenin pathway and may play an important role in colorectal tumorigenesis. The gene encoding human APCDD1 maps to chromosome 18, which houses over 300 protein-coding genes and contains nearly 76 million bases. There are a variety of diseases associated with defects in chromosome 18-localized genes, some of which include Trisomy 18 (also known as Edwards syndrome), Niemann-Pick disease, hereditary hemorrhagic telangiectasia, erythropoietic protoporphyria and follicular lymphomas.

REFERENCES

- Collins, S., et al. 2001. Gerstmann-Sträussler-Scheinker syndrome, fatal familial insomnia and kuru: a review of these less common human transmissible spongiform encephalopathies. *J. Clin. Neurosci.* 8: 387-397.
- Masullo, C. and Macchi, G. 2001. Does PRNP gene control the clinical and pathological phenotype of human spongiform transmissible encephalopathies? *Clin. Neuropathol.* 20: 19-25.
- Takahashi, M., et al. 2002. Isolation of a novel human gene, APCDD1, as a direct target of the β -catenin/T-cell factor 4 complex with probable involvement in colorectal carcinogenesis. *Cancer Res.* 62: 5651-5656.

CHROMOSOMAL LOCATION

Genetic locus: APCDD1L (human) mapping to 20q13.32.

SOURCE

APCDD1L (F-5) is a mouse monoclonal antibody specific for an epitope mapping between amino acids 448-472 near the C-terminus of APCDD1L of human origin.

PRODUCT

Each vial contains 200 μ g IgG γ kappa light chain in 1.0 ml of PBS with < 0.1% sodium azide and 0.1% gelatin.

APCDD1L (F-5) is available conjugated to agarose (sc-398858 AC), 500 μ g/0.25 ml agarose in 1 ml, for IP; to HRP (sc-398858 HRP), 200 μ g/ml, for WB, IHC(P) and ELISA; to either phycoerythrin (sc-398858 PE), fluorescein (sc-398858 FITC), Alexa Fluor® 488 (sc-398858 AF488), Alexa Fluor® 546 (sc-398858 AF546), Alexa Fluor® 594 (sc-398858 AF594) or Alexa Fluor® 647 (sc-398858 AF647), 200 μ g/ml, for WB (RGB), IF, IHC(P) and FCM; and to either Alexa Fluor® 680 (sc-398858 AF680) or Alexa Fluor® 790 (sc-398858 AF790), 200 μ g/ml, for Near-Infrared (NIR) WB, IF and FCM.

Blocking peptide available for competition studies, sc-398858 P, (100 μ g peptide in 0.5 ml PBS containing < 0.1% sodium azide and 0.2% stabilizer protein).

Alexa Fluor® is a trademark of Molecular Probes, Inc., Oregon, USA

APPLICATIONS

APCDD1L (F-5) is recommended for detection of APCDD1L of human origin by Western Blotting (starting dilution 1:100, dilution range 1:100-1:1000), immunoprecipitation [1-2 μ g per 100-500 μ g of total protein (1 ml of cell lysate)], immunofluorescence (starting dilution 1:50, dilution range 1:50-1:500) and solid phase ELISA (starting dilution 1:30, dilution range 1:30-1:3000).

Suitable for use as control antibody for APCDD1L siRNA (h): sc-72513, APCDD1L shRNA Plasmid (h): sc-72513-SH and APCDD1L shRNA (h) Lentiviral Particles: sc-72513-V.

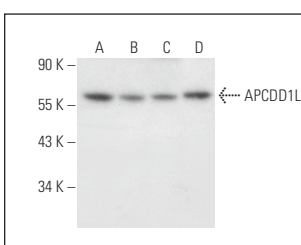
Molecular Weight of APCDD1L: 56 kDa.

Positive Controls: K-562 whole cell lysate: sc-2203, SH-SY5Y cell lysate: sc-3812 or HeLa whole cell lysate: sc-2200.

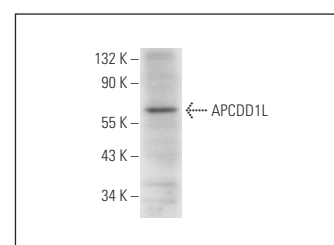
RECOMMENDED SUPPORT REAGENTS

To ensure optimal results, the following support reagents are recommended: 1) Western Blotting: use m-IgG κ BP-HRP: sc-516102 or m-IgG κ BP-HRP (Cruz Marker): sc-516102-CM (dilution range: 1:1000-1:10000), Cruz Marker™ Molecular Weight Standards: sc-2035, UltraCruz® Blocking Reagent: sc-516214 and Western Blotting Luminol Reagent: sc-2048. 2) Immunoprecipitation: use Protein A/G PLUS-Agarose: sc-2003 (0.5 ml agarose/2.0 ml). 3) Immunofluorescence: use m-IgG κ BP-FITC: sc-516140 or m-IgG κ BP-PE: sc-516141 (dilution range: 1:50-1:200) with UltraCruz® Mounting Medium: sc-24941 or UltraCruz® Hard-set Mounting Medium: sc-359850.

DATA



APCDD1L (F-5): sc-398858. Western blot analysis of APCDD1L expression in K-562 (A), SH-SY5Y (B), MIA PaCa-2 (C) and HeLa (D) whole cell lysates.



APCDD1L (F-5): sc-398858. Western blot analysis of APCDD1L expression in Caki-1 whole cell lysate.

STORAGE

Store at 4° C, **DO NOT FREEZE**. Stable for one year from the date of shipment. Non-hazardous. No MSDS required.

RESEARCH USE

For research use only, not for use in diagnostic procedures.

PROTOCOLS

See our web site at www.scbt.com for detailed protocols and support products.