

ATBF1 (H-150): sc-48807

BACKGROUND

AT-motif binding factor 1 (ATBF1) binds to the AT-rich core sequence element in the human α -fetoprotein enhancer. Alternative splicing generates the ATBF1-A and ATBF1-B. While ATBF1-A contains a 920-amino acid extension at the N-terminus, both ATBF1-A and ATBF1-B contain 4 DNA-binding homeobox domains. Additionally, ATBF1-A contains 23 zinc finger motifs while ATBF1-B contains 18 zinc finger motifs. The N-terminal extension unique to ATBF1-A has transcriptional repressor activity. In the small intestine, ATBF1-A inhibits expression of the brushborder enzyme aminopeptidase-N through direct binding to the AT motif element. Besides functioning in transcription regulation, ATBF1 also functions in ATPase activity. ATPase activity associated with ATBF1-A is DNA/RNA-dependent and requires both homeobox domains and zinc finger motifs. ATBF1 is highly expressed in spleen and brain tissues. The gene encoding human ATBF1 maps to chromosome 16q22.2.

CHROMOSOMAL LOCATION

Genetic locus: ZFH3 (human) mapping to 16q22.2; Zfh3 (mouse) mapping to 8 D3.

SOURCE

ATBF1 (H-150) is a rabbit polyclonal antibody raised against amino acids 2371-2520 mapping within an internal region of ATBF1 of human origin.

PRODUCT

Each vial contains 200 μ g IgG in 1.0 ml of PBS with < 0.1% sodium azide and 0.1% gelatin. Also available as TransCruz reagent for Gel Supershift and ChIP applications, sc-48807 X, 200 μ g/0.1 ml.

RESEARCH USE

For research use only, not for use in diagnostic procedures.

APPLICATIONS

ATBF1 (H-150) is recommended for detection of ATBF1-A and ATBF1-B of mouse, rat and human origin by Western Blotting (starting dilution 1:200, dilution range 1:100-1:1000), immunoprecipitation [1-2 μ g per 100-500 μ g of total protein (1 ml of cell lysate)], immunofluorescence (starting dilution 1:50, dilution range 1:50-1:500) and solid phase ELISA (starting dilution 1:30, dilution range 1:30-1:3000).

ATBF1 (H-150) is also recommended for detection of ATBF1-A and ATBF1-B in additional species, including equine, canine and porcine.

Suitable for use as control antibody for ATBF1 siRNA (h): sc-37694, ATBF1 siRNA (m): sc-37695, ATBF1 shRNA Plasmid (h): sc-37694-SH, ATBF1 shRNA Plasmid (m): sc-37695-SH, ATBF1 shRNA (h) Lentiviral Particles: sc-37694-V and ATBF1 shRNA (m) Lentiviral Particles: sc-37695-V.

ATBF1 (H-150) X TransCruz antibody is recommended for Gel Supershift and ChIP applications.

Molecular Weight of ATBF1-A: 404 kDa.

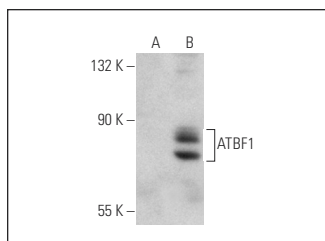
Molecular Weight of ATBF1-B: 306 kDa.

Positive Controls: ATBF1 transfected CHO whole cell lysate.

RECOMMENDED SECONDARY REAGENTS

To ensure optimal results, the following support (secondary) reagents are recommended: 1) Western Blotting: use goat anti-rabbit IgG-HRP: sc-2004 (dilution range: 1:2000-1:100,000) or Cruz Marker™ compatible goat anti-rabbit IgG-HRP: sc-2030 (dilution range: 1:2000-1:5000), Cruz Marker™ Molecular Weight Standards: sc-2035, TBS Blotto A Blocking Reagent: sc-2333 and Western Blotting Luminol Reagent: sc-2048. 2) Immunoprecipitation: use Protein A/G PLUS-Agarose: sc-2003 (0.5 ml agarose/2.0 ml). 3) Immunofluorescence: use goat anti-rabbit IgG-FITC: sc-2012 (dilution range: 1:100-1:400) or goat anti-rabbit IgG-TR: sc-2780 (dilution range: 1:100-1:400) with UltraCruz™ Mounting Medium: sc-24941.

DATA



ATBF1 (H-150): sc-48807. Western blot analysis of ATBF1 expression in non-transfected CHO (A) and human ATBF1 transfected CHO (B) whole cell lysates.

STORAGE

Store at 4° C, ****DO NOT FREEZE****. Stable for one year from the date of shipment. Non-hazardous. No MSDS required.

PROTOCOLS

See our web site at www.scbt.com or our catalog for detailed protocols and support products.


 MONOS
Satisfaction
Guaranteed

Try **ATBF1 (3B1): sc-517126**, our highly recommended monoclonal alternative to ATBF1 (H-150).