

p-Rb (B-4): sc-514031

BACKGROUND

Pediatric cancer retinoblastoma and the formation of other human tumors can be attributed to mutations in the retinoblastoma tumor suppressor gene (Rb). The Rb protein regulates differentiation, apoptosis and cell cycle control by coordinating the cell cycle at G₁-S with transcriptional machinery. During G₁, cyclin D-dependent kinase-mediated phosphorylation of Rb at Ser 795 marks the conversion of Rb from a transcriptionally repressive, hypophosphorylated state to an inactive, phosphorylated state, which may be sustained through mitosis by differential phosphorylation of up to 16 putative serine or threonine residues, including Ser 249/Thr 252, Thr 373, Thr 356, Ser 780, Ser 807/Ser 811 and Thr 821/Thr 826. Hypophosphorylated Rb represses the transcription of genes controlling the cell cycle through direct protein-protein interactions and through the recruitment of histone deacetylase.

CHROMOSOMAL LOCATION

Genetic locus: RB1 (human) mapping to 13q14.2; Rb1 (mouse) mapping to 14 D3.

SOURCE

p-Rb (B-4) is a mouse monoclonal antibody specific for an epitope mapping to a short amino acid sequence containing Ser 795 phosphorylated Rb of human origin.

PRODUCT

Each vial contains 200 µg IgM kappa light chain in 1.0 ml of PBS with < 0.1% sodium azide and 0.1% gelatin.

Also available as TransCruz reagent for Gel Supershift and ChIP applications, sc-514031 X, 200 µg/0.1 ml.

Blocking peptide available for competition studies, sc-514031 P, (100 µg peptide in 0.5 ml PBS containing < 0.1% sodium azide and 0.2% stabilizer protein).

APPLICATIONS

p-Rb (B-4) is recommended for detection of Ser 795 phosphorylated Rb of mouse, rat and human origin by Western Blotting (starting dilution 1:100, dilution range 1:100-1:1000), immunoprecipitation [1-2 µg per 100-500 µg of total protein (1 ml of cell lysate)], immunofluorescence (starting dilution 1:50, dilution range 1:50-1:500) and solid phase ELISA (starting dilution 1:30, dilution range 1:30-1:3000).

Suitable for use as control antibody for Rb siRNA (h): sc-29468, Rb siRNA (m): sc-29469, Rb shRNA Plasmid (h): sc-29468-SH, Rb shRNA Plasmid (m): sc-29469-SH, Rb shRNA (h) Lentiviral Particles: sc-29468-V and Rb shRNA (m) Lentiviral Particles: sc-29469-V.

p-Rb (B-4) X TransCruz antibody is recommended for Gel Supershift and ChIP applications.

Molecular Weight (predicted) of p-Rb: 106 kDa.

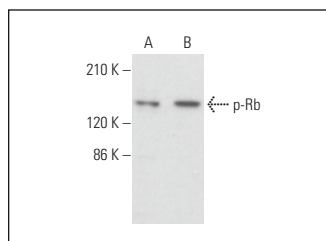
Molecular Weight (observed) of p-Rb: 107-140 kDa.

Positive Controls: MOLT-4 cell lysate: sc-2233, CCRF-CEM cell lysate: sc-2225 or Jurkat whole cell lysate: sc-2204.

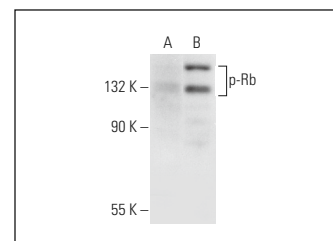
RECOMMENDED SUPPORT REAGENTS

To ensure optimal results, the following support reagents are recommended: 1) Western Blotting: use m-IgGκ BP-HRP: sc-516102 or m-IgGκ BP-HRP (Cruz Marker): sc-516102-CM (dilution range: 1:1000-1:10000), Cruz Marker™ Molecular Weight Standards: sc-2035, TBS Blotto B Blocking Reagent: sc-2335 (use 50 mM NaF, sc-24988, as diluent), Lambda Phosphatase: sc-200312A and Western Blotting Luminol Reagent: sc-2048. 2) Immunoprecipitation: use Protein L-Agarose: sc-2336 (0.5 ml agarose/2.0 ml). 3) Immunofluorescence: use m-IgGκ BP-FITC: sc-516140 or m-IgGκ BP-PE: sc-516141 (dilution range: 1:50-1:200) with UltraCruz® Mounting Medium: sc-24941 or UltraCruz® Hard-set Mounting Medium: sc-359850.

DATA



p-Rb (B-4): sc-514031. Western blot analysis of Rb phosphorylation in CCRF-CEM (A) and Jurkat (B) whole cell lysates.



p-Rb (B-4): sc-514031. Western blot analysis of Rb phosphorylation in MOLT-4 (A) and forskolin treated MOLT-4 (B) whole cell lysates.

SELECT PRODUCT CITATIONS

1. Aboouf, M.A., et al. 2022. Pro-apoptotic and anti-invasive properties underscore the tumor-suppressing impact of myoglobin on a subset of human breast cancer cells. *Int. J. Mol. Sci.* 23: 11483.

STORAGE

Store at 4° C, **DO NOT FREEZE**. Stable for one year from the date of shipment. Non-hazardous. No MSDS required.

RESEARCH USE

For research use only, not for use in diagnostic procedures.

PROTOCOLS

See our web site at www.scbt.com for detailed protocols and support products.