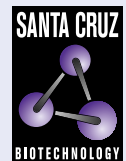


# DDEFL1 (C-3): sc-514132



The Power to Question

## BACKGROUND

DDEFL1 (development and differentiation enhancing factor-like 1), also known as ACAP4, UPLC1, CENTB6 or ASAP3 (ArfGAP with SH3 domain, ankyrin repeat and PH domain 3), is a 903 amino acid cytoplasmic protein belonging to the subfamily of ADP-ribosylation factor (Arf) GTPase-activating proteins. DDEFL1 contains two ANK repeats, an Arf-GAP domain and a PH domain, and is expressed in lung, liver, blood leukocytes and primary hepatocarcinoma. The Arf-GAP domain of DDEFL1 catalyzes the hydrolysis of GTP bound to Arf proteins. DDEFL1 promotes cell differentiation and migration, and has been implicated in the pathogenesis of hepatocellular carcinoma. Existing as two isoforms produced by alternative splicing events, DDEFL1 is encoded by a gene located on human chromosome 1. Human chromosome 1 spans 260 million base pairs, contains over 3,000 genes and comprises nearly 8% of the human genome.

## REFERENCES

1. Jackson, T.R., et al. 2000. ACAPs are arf6 GTPase-activating proteins that function in the cell periphery. *J. Cell Biol.* 151: 627-638.
2. Randazzo, P.A., et al. 2000. Molecular aspects of the cellular activities of ADP-ribosylation factors. *Sci. STKE* 2000: re1.
3. Okabe, H., et al. 2004. Isolation of development and differentiation enhancing factor-like 1 (DDEFL1) as a drug target for hepatocellular carcinomas. *Int. J. Oncol.* 24: 43-48.
4. Randazzo, P.A. and Hirsch, D.S. 2004. Arf GAPs: multifunctional proteins that regulate membrane traffic and actin remodelling. *Cell. Signal.* 16: 401-413.

## CHROMOSOMAL LOCATION

Genetic locus: ASAP3 (human) mapping to 1p36.12; Asap3 (mouse) mapping to 4 D3.

## SOURCE

DDEFL1 (C-3) is a mouse monoclonal antibody specific for an epitope mapping between amino acids 872-892 at the C-terminus of DDEFL1 of human origin.

## PRODUCT

Each vial contains 200 µg IgG<sub>1</sub> kappa light chain in 1.0 ml of PBS with < 0.1% sodium azide and 0.1% gelatin.

DDEFL1 (C-3) is available conjugated to agarose (sc-514132 AC), 500 µg/0.25 ml agarose in 1 ml, for IP; to HRP (sc-514132 HRP), 200 µg/ml, for WB, IHC(P) and ELISA; to either phycoerythrin (sc-514132 PE), fluorescein (sc-514132 FITC), Alexa Fluor® 488 (sc-514132 AF488), Alexa Fluor® 546 (sc-514132 AF546), Alexa Fluor® 594 (sc-514132 AF594) or Alexa Fluor® 647 (sc-514132 AF647), 200 µg/ml, for WB (RGB), IF, IHC(P) and FCM; and to either Alexa Fluor® 680 (sc-514132 AF680) or Alexa Fluor® 790 (sc-514132 AF790), 200 µg/ml, for Near-Infrared (NIR) WB, IF and FCM.

Blocking peptide available for competition studies, sc-514132 P, (100 µg peptide in 0.5 ml PBS containing < 0.1% sodium azide and 0.2% stabilizer protein).

## APPLICATIONS

DDEFL1 (C-3) is recommended for detection of DDEFL1 of mouse, rat and human origin by Western Blotting (starting dilution 1:100, dilution range 1:100-1:1000), immunoprecipitation [1-2 µg per 100-500 µg of total protein (1 ml of cell lysate)], immunofluorescence (starting dilution 1:50, dilution range 1:50-1:500) and solid phase ELISA (starting dilution 1:30, dilution range 1:30-1:3000).

Suitable for use as control antibody for DDEFL1 siRNA (h): sc-88264, DDEFL1 siRNA (m): sc-142915, DDEFL1 shRNA Plasmid (h): sc-88264-SH, DDEFL1 shRNA Plasmid (m): sc-142915-SH, DDEFL1 shRNA (h) Lentiviral Particles: sc-88264-V and DDEFL1 shRNA (m) Lentiviral Particles: sc-142915-V.

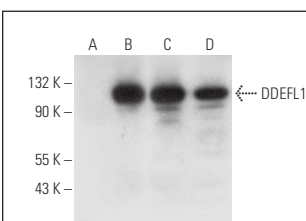
Molecular Weight of DDEFL1: 99 kDa.

Positive Controls: DDEFL1 (m): 293T Lysate: sc-125230, ZR-75-1 cell lysate: sc-2241 or MCF7 whole cell lysate: sc-2206.

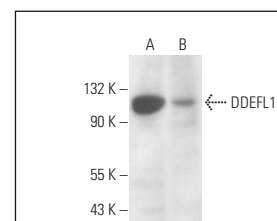
## RECOMMENDED SUPPORT REAGENTS

To ensure optimal results, the following support reagents are recommended: 1) Western Blotting: use m-IgGκ BP-HRP: sc-516102 or m-IgGκ BP-HRP (Cruz Marker): sc-516102-CM (dilution range: 1:1000-1:10000), Cruz Marker™ Molecular Weight Standards: sc-2035, UltraCruz® Blocking Reagent: sc-516214 and Western Blotting Luminol Reagent: sc-2048. 2) Immunoprecipitation: use Protein A/G PLUS-Agarose: sc-2003 (0.5 ml agarose/2.0 ml). 3) Immunofluorescence: use m-IgGκ BP-FITC: sc-516140 or m-IgGκ BP-PE: sc-516141 (dilution range: 1:50-1:200) with UltraCruz® Mounting Medium: sc-24941 or UltraCruz® Hard-set Mounting Medium: sc-359850.

## DATA



DDEFL1 (C-3): sc-514132. Western blot analysis of DDEFL1 expression in non-transfected 293T: sc-117752 (A), mouse DDEFL1 transfected 293T: sc-125230 (B), ZR-75-1 (C) and MCF7 (D) whole cell lysates.



DDEFL1 (C-3): sc-514132. Western blot analysis of DDEFL1 expression in MCF7 (A) and HeLa (B) whole cell lysates.

## STORAGE

Store at 4° C, \*\*DO NOT FREEZE\*\*. Stable for one year from the date of shipment. Non-hazardous. No MSDS required.

## RESEARCH USE

For research use only, not for use in diagnostic procedures.

Alexa Fluor® is a trademark of Molecular Probes, Inc., Oregon, USA