

# EAP30 (G-8): sc-514147



The Power to Question

## BACKGROUND

EAP30 (ELL-associated protein of 30 kDa), also known as SNF8, Dot3 or VPS22, is a 258 amino acid protein that localizes to both the nucleus and the cytoplasm and is a member of the SNF8 family of vacuolar sorting proteins. Expressed as two alternatively spliced isoforms, EAP30 is a component of the multi-protein ESCRT-II complex that is involved in the formation of multivesicular bodies (MVBs) and in the sorting of endosomal cargo proteins within MVBs. In addition to its role in the formation and maintenance of MVBs, the ESCRT-II complex plays a role in targeting proteins to the lysosome for degradation and is also thought to repress the activity of RNA polymerase II (Pol II), thereby regulating transcription. As a member of the ESCRT-II complex, EAP30 is involved in MVB pathways and transcriptional regulation events.

## REFERENCES

- Schmidt, A.E., Miller, T., Schmidt, S.L., Shiekhhattar, R. and Shilatifard, A. 1999. Cloning and characterization of the EAP30 subunit of the ELL complex that confers derepression of transcription by RNA polymerase II. *J. Biol. Chem.* 274: 21981-21985.
- Kamura, T., Burian, D., Khalili, H., Schmidt, S.L., Sato, S., Liu, W.J., Conrad, M.N., Conaway, R.C., Conaway, J.W. and Shilatifard, A. 2001. Cloning and characterization of ELL-associated proteins EAP45 and EAP20. a role for yeast EAP-like proteins in regulation of gene expression by glucose. *J. Biol. Chem.* 276: 16528-16533.
- Martin-Serrano, J., Yarovoy, A., Perez-Caballero, D., Bieniasz, P.D. and Yarovoy, A. 2003. Divergent retroviral late-budding domains recruit vacuolar protein sorting factors by using alternative adaptor proteins. *Proc. Natl. Acad. Sci. USA* 100: 12414-12419.
- Wernimont, A.K. and Weissenhorn, W. 2004. Crystal structure of subunit VPS25 of the endosomal trafficking complex ESCRT-II. *BMC Struct. Biol.* 4: 10.
- Teo, H., Perisic, O., González, B. and Williams, R.L. 2004. ESCRT-II, an endosome-associated complex required for protein sorting: crystal structure and interactions with ESCRT-III and membranes. *Dev. Cell* 7: 559-569.

## CHROMOSOMAL LOCATION

Genetic locus: SNF8 (human) mapping to 17q21.32; Snf8 (mouse) mapping to 11 D.

## SOURCE

EAP30 (G-8) is a mouse monoclonal antibody specific for an epitope mapping between amino acids 39-62 near the N-terminus of EAP30 of human origin.

## PRODUCT

Each vial contains 200 µg IgG<sub>2a</sub> kappa light chain in 1.0 ml of PBS with < 0.1% sodium azide and 0.1% gelatin.

Blocking peptide available for competition studies, sc-514147 P, (100 µg peptide in 0.5 ml PBS containing < 0.1% sodium azide and 0.2% stabilizer protein).

## APPLICATIONS

EAP30 (G-8) is recommended for detection of EAP30 of mouse, rat and human origin by Western Blotting (starting dilution 1:100, dilution range 1:100-1:1000), immunoprecipitation [1-2 µg per 100-500 µg of total protein (1 ml of cell lysate)], immunofluorescence (starting dilution 1:50, dilution range 1:50-1:500) and solid phase ELISA (starting dilution 1:30, dilution range 1:30-1:3000).

Suitable for use as control antibody for EAP30 siRNA (h): sc-77279, EAP30 siRNA (m): sc-77280, EAP30 shRNA Plasmid (h): sc-77279-SH, EAP30 shRNA Plasmid (m): sc-77280-SH, EAP30 shRNA (h) Lentiviral Particles: sc-77279-V and EAP30 shRNA (m) Lentiviral Particles: sc-77280-V.

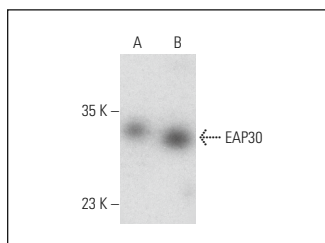
Molecular Weight of EAP30: 30 kDa.

Positive Controls: EAP30 (m): 293T Lysate: sc-125279, NIH/3T3 whole cell lysate: sc-2210 or HeLa whole cell lysate: sc-2200.

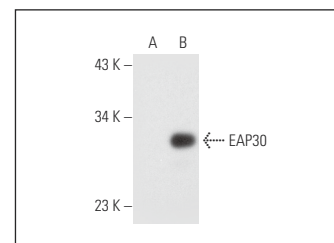
## RECOMMENDED SUPPORT REAGENTS

To ensure optimal results, the following support reagents are recommended: 1) Western Blotting: use m-IgGκ BP-HRP: sc-516102 or m-IgGκ BP-HRP (Cruz Marker): sc-516102-CM (dilution range: 1:1000-1:10000), Cruz Marker™ Molecular Weight Standards: sc-2035, UltraCruz® Blocking Reagent: sc-516214 and Western Blotting Luminol Reagent: sc-2048. 2) Immunoprecipitation: use Protein A/G PLUS-Agarose: sc-2003 (0.5 ml agarose/2.0 ml). 3) Immunofluorescence: use m-IgGκ BP-FITC: sc-516140 or m-IgGκ BP-PE: sc-516141 (dilution range: 1:50-1:200) with UltraCruz® Mounting Medium: sc-24941 or UltraCruz® Hard-set Mounting Medium: sc-359850.

## DATA



EAP30 (G-8): sc-514147. Western blot analysis of EAP30 expression in NIH/3T3 (A) and HeLa (B) whole cell lysates.



EAP30 (G-8): sc-514147. Western blot analysis of EAP30 expression in non-transfected: sc-117752 (A) and mouse EAP30 transfected: sc-125279 (B) 293T whole cell lysates.

## STORAGE

Store at 4° C, \*\*DO NOT FREEZE\*\*. Stable for one year from the date of shipment. Non-hazardous. No MSDS required.

## RESEARCH USE

For research use only, not for use in diagnostic procedures.

## PROTOCOLS

See our web site at [www.scbt.com](http://www.scbt.com) for detailed protocols and support products.