

Amylase (A-1): sc-514229

BACKGROUND

The three types of Amylase found in human and mouse tissues are salivary, pancreatic and ovarian tumor. In humans there are two haplotypes consisting of very different numbers of salivary Amylase proteins. The short haplotype contains two pancreatic proteins, AMY2A and AMY2B and one salivary Amylase protein, AMY1C. The long haplotype consists of two salivary Amylase proteins, AMY1A and AMY1B. In mice, there are two apparently identical copies of AMY2A which specify pancreatic Amylase. The single copy of AMY1A is expressed in a tissue specific fashion in the salivary gland and the liver.

REFERENCES

1. Takeuchi, T., et al. 1981. Characterization of amylases produced by tumors. Clin. Chem. 27: 556-559.
2. Schibler, U., et al. 1982. Tissue specific expression of mouse α Amylase genes. Adv. Exp. Med. Biol. 158: 381-385.

CHROMOSOMAL LOCATION

Genetic locus: AMY1A/AMY2A/AMY2B (human) mapping to 1p21.1; Amy1/Amy2a5 (mouse) mapping to 3 F3.

SOURCE

Amylase (A-1) is a mouse monoclonal antibody specific for an epitope mapping between amino acids 483-508 at the C-terminus of Amylase of human origin.

PRODUCT

Each vial contains 200 μ g IgG κ kappa light chain in 1.0 ml of PBS with < 0.1% sodium azide and 0.1% gelatin.

Blocking peptide available for competition studies, sc-514229 P, (100 μ g peptide in 0.5 ml PBS containing < 0.1% sodium azide and 0.2% stabilizer protein).

APPLICATIONS

Amylase (A-1) is recommended for detection of Amylase 1, Amylase 2A and Amylase 2B of human origin, Amylase 1 and Amylase 2a5 of mouse origin, and Amylase 2 of rat origin by Western Blotting (starting dilution 1:100, dilution range 1:100-1:1000), immunoprecipitation [1-2 μ g per 100-500 μ g of total protein (1 ml of cell lysate)], immunofluorescence (starting dilution 1:50, dilution range 1:50-1:500), immunohistochemistry (including paraffin-embedded sections) (starting dilution 1:50, dilution range 1:50-1:500) and solid phase ELISA (starting dilution 1:30, dilution range 1:30-1:3000).

Suitable for use as control antibody for Amylase siRNA (h): sc-29675, Amylase siRNA (m): sc-29676, Amylase shRNA Plasmid (h): sc-29675-SH, Amylase shRNA Plasmid (m): sc-29676-SH, Amylase shRNA (h) Lentiviral Particles: sc-29675-V and Amylase shRNA (m) Lentiviral Particles: sc-29676-V.

Molecular Weight of Amylase: 53 kDa.

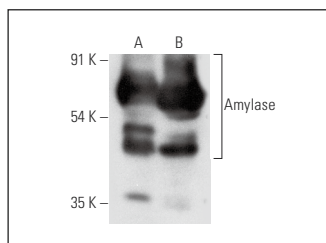
Positive Controls: Amylase (h): 293T Lysate: sc-112718, mouse pancreas extract: sc-364244 or rat pancreas extract: sc-364806.

RECOMMENDED SUPPORT REAGENTS

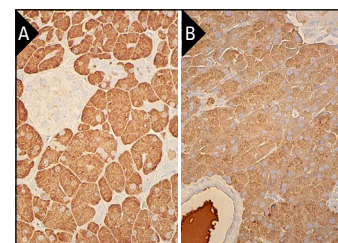
To ensure optimal results, the following support reagents are recommended:

- 1) Western Blotting: use m-IgG κ BP-HRP: sc-516102 or m-IgG κ BP-HRP (Cruz Marker): sc-516102-CM (dilution range: 1:1000-1:10000), Cruz Marker™ Molecular Weight Standards: sc-2035, UltraCruz® Blocking Reagent: sc-516214 and Western Blotting Luminol Reagent: sc-2048.
- 2) Immunoprecipitation: use Protein A/G PLUS-Agarose: sc-2003 (0.5 ml agarose/2.0 ml).
- 3) Immunofluorescence: use m-IgG κ BP-FITC: sc-516140 or m-IgG κ BP-PE: sc-516141 (dilution range: 1:50-1:200) with UltraCruz® Mounting Medium: sc-24941 or UltraCruz® Hard-set Mounting Medium: sc-359850.
- 4) Immunohistochemistry: use m-IgG κ BP-HRP: sc-516102 with DAB, 50X: sc-24982 and Immunohistomount: sc-45086, or Organo/Limonene Mount: sc-45087.

DATA



Amylase (A-1): sc-514229. Western blot analysis of Amylase expression in mouse pancreas (A) and rat pancreas (B) tissue extracts.



Amylase (A-1): sc-514229. Immunoperoxidase staining of formalin fixed, paraffin-embedded human pancreas tissue showing cytoplasmic staining of exocrine glandular cells (A). Immunoperoxidase staining of formalin fixed, paraffin-embedded human pancreas tissue showing cytoplasmic staining of exocrine glandular cells (B). Blocked with 0.25X UltraCruz® Blocking Reagent: sc-516214. Detected with m-IgG Fc BP-B: sc-533652 and ImmunoCruz® ABC Kit: sc-516216.

SELECT PRODUCT CITATIONS

1. Marolt, U., et al. 2022. Calcium imaging in intact mouse acinar cells in acute pancreas tissue slices. PLoS ONE 17: e0268644.
2. Orján, E.M., et al. 2023. The anti-inflammatory effect of dimethyl trisulfide in experimental acute pancreatitis. Sci. Rep. 13: 16813.

STORAGE

Store at 4° C, **DO NOT FREEZE**. Stable for one year from the date of shipment. Non-hazardous. No MSDS required.

RESEARCH USE

For research use only, not for use in diagnostic procedures.



See **Amylase (G-10): sc-46657** for Amylase antibody conjugates, including AC, HRP, FITC, PE, and Alexa Fluor® 488, 546, 594, 647, 680 and 790.