

CXCL16 (C-5): sc-514363

BACKGROUND

CXCL16, also known as SR-PSOX (scavenger receptor for phosphatidylserine and oxidized lipoprotein), binds to CXCR6/Bonzo/STRL33, induces a strong chemotactic response and induces calcium mobilization. CXCL16, an α (CXCL) chemokine, also has characteristics of C-C chemokines and a structure similar to fractalkine (neurotactin) in having a transmembrane region and a chemokine domain suspended by a mucin-like stalk. Northern blot analysis of mouse and human tissues detect a 2.2-kb CXCL16 transcript in spleen, lymph nodes, Peyer patches, lung, kidney, small intestine and thymus, with weak expression in heart and liver and no expression in brain and bone marrow. Flow cytometry and Western blot analysis demonstrate expression of a glycosylated cell-surface protein and a cell supernatant soluble protein.

REFERENCES

1. Matloubian, M., et al. 2000. A transmembrane C-X-C chemokine is a ligand for HIV-co-receptor Bonzo. *Nat. Immunol.* 1: 298-304.
2. Wilbanks, A., et al. 2001. Expression cloning of the STRL33/Bonzo/TYMSTR ligand reveals elements of C-C, C-X-C, and CX3C chemokines. *J. Immunol.* 166: 5145-5154.
3. Kume, N. 2002. New oxidized LDL receptors and their functions in atherogenesis. *Nippon Ronen Igakkai Zasshi* 39: 264-267.
4. Shashkin, P., et al. 2003. Expression of CXCL16 in human T cells. *Arterioscler. Thromb. Vasc. Biol.* 23: 148-149.

CHROMOSOMAL LOCATION

Genetic locus: CXCL16 (human) mapping to 17p13.2.

SOURCE

CXCL16 (C-5) is a mouse monoclonal antibody specific for an epitope mapping between amino acids 117-148 within an internal region of CXCL16 of human origin.

PRODUCT

Each vial contains 200 μ g IgG_{2b} kappa light chain in 1.0 ml of PBS with < 0.1% sodium azide and 0.1% gelatin.

CXCL16 (C-5) is available conjugated to agarose (sc-514363 AC), 500 μ g/0.25 ml agarose in 1 ml, for IP; to HRP (sc-514363 HRP), 200 μ g/ml, for WB, IHC(P) and ELISA; to either phycoerythrin (sc-514363 PE), fluorescein (sc-514363 FITC), Alexa Fluor[®] 488 (sc-514363 AF488), Alexa Fluor[®] 546 (sc-514363 AF546), Alexa Fluor[®] 594 (sc-514363 AF594) or Alexa Fluor[®] 647 (sc-514363 AF647), 200 μ g/ml, for WB (RGB), IF, IHC(P) and FCM; and to either Alexa Fluor[®] 680 (sc-514363 AF680) or Alexa Fluor[®] 790 (sc-514363 AF790), 200 μ g/ml, for Near-Infrared (NIR) WB, IF and FCM.

Blocking peptide available for competition studies, sc-514363 P, (100 μ g peptide in 0.5 ml PBS containing < 0.1% sodium azide and 0.2% stabilizer protein).

RESEARCH USE

For research use only, not for use in diagnostic procedures.

APPLICATIONS

CXCL16 (C-5) is recommended for detection of CXCL16 of human origin by Western Blotting (starting dilution 1:100, dilution range 1:100-1:1000), immunoprecipitation [1-2 μ g per 100-500 μ g of total protein (1 ml of cell lysate)], immunofluorescence (starting dilution 1:50, dilution range 1:50-1:500) and solid phase ELISA (starting dilution 1:30, dilution range 1:30-1:3000).

Suitable for use as control antibody for CXCL16 siRNA (h): sc-105252, CXCL16 shRNA Plasmid (h): sc-105252-SH and CXCL16 shRNA (h) Lentiviral Particles: sc-105252-V.

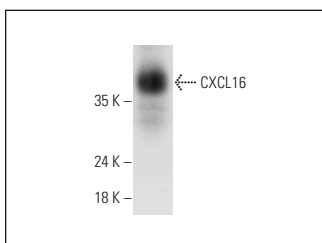
Molecular Weight of CXCL16: 28 kDa.

Positive Controls: human lung extract: sc-363767 or A-431 whole cell lysate: sc-2201.

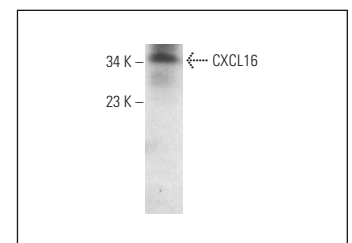
RECOMMENDED SUPPORT REAGENTS

To ensure optimal results, the following support reagents are recommended: 1) Western Blotting: use m-IgG κ BP-HRP: sc-516102 or m-IgG κ BP-HRP (Cruz Marker): sc-516102-CM (dilution range: 1:1000-1:10000), Cruz Marker[™] Molecular Weight Standards: sc-2035, UltraCruz[®] Blocking Reagent: sc-516214 and Western Blotting Luminol Reagent: sc-2048. 2) Immunoprecipitation: use Protein A/G PLUS-Agarose: sc-2003 (0.5 ml agarose/2.0 ml). 3) Immunofluorescence: use m-IgG κ BP-FITC: sc-516140 or m-IgG κ BP-PE: sc-516141 (dilution range: 1:50-1:200) with UltraCruz[®] Mounting Medium: sc-24941 or UltraCruz[®] Hard-set Mounting Medium: sc-359850.

DATA



CXCL16 (C-5): sc-514363. Western blot analysis of CXCL16 expression in human lung tissue extract.



CXCL16 (C-5): sc-514363. Western blot analysis of CXCL16 expression in A-431 whole cell lysate.

SELECT PRODUCT CITATIONS

1. Juárez-Rodríguez, P., et al. 2020. Prenatal alcohol exposure in rats diminishes postnatal Cxcl16 chemokine ligand brain expression. *Brain Sci.* 10: 987.
2. Aboyoussif, A.M., et al. 2021. Enoxaparin prevents CXCL16/ADAM10-mediated cisplatin renal toxicity: role of the coagulation system and the transcriptional factor NF κ B. *Life Sci.* 270: 119120.

STORAGE

Store at 4° C, ****DO NOT FREEZE****. Stable for one year from the date of shipment. Non-hazardous. No MSDS required.

Alexa Fluor[®] is a trademark of Molecular Probes, Inc., Oregon, USA