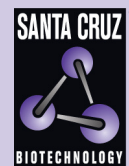


ZKSCAN2 (F-8): sc-514383



The Power to Question

BACKGROUND

Zinc-finger proteins contain DNA-binding domains and have a wide variety of functions, most of which encompass some form of transcriptional activation or repression. A member of the Krüppel C₂H₂-type zinc-finger protein family, ZKSCAN2, also known as ZNF694, is a 967 amino acid nuclear protein containing 6 C₂H₂-type zinc fingers, one KRAB A domain and one SCAN box domain. Like many other KRAB A box-containing proteins, ZKSCAN2 is suggested to function as a transcriptional repressor. As a result of alternative splicing, two transcripts of ZKSCAN2 exist. The gene encoding ZKSCAN2 maps to human chromosome 16, which encodes over 900 genes and comprises nearly 3% of the human genome. The rare disorder Rubinstein-Taybi syndrome is also associated with chromosome 16, as is Crohn's disease, which is a gastrointestinal inflammatory condition.

REFERENCES

1. Baraitser, M., et al. 1983. The Rubinstein-Taybi syndrome: occurrence in two sets of identical twins. *Clin. Genet.* 23: 318-320.
2. Breuning, M.H., et al. 1993. Rubinstein-Taybi syndrome caused by submicroscopic deletions within 16p13.3. *Am. J. Hum. Genet.* 52: 249-254.
3. Ota, T., et al. 2004. Complete sequencing and characterization of 21,243 full-length human cDNAs. *Nat. Genet.* 36: 40-45.
4. Martin, J., et al. 2004. The sequence and analysis of duplication-rich human chromosome 16. *Nature* 432: 988-994.
5. Gerhard, D.S., et al. 2004. The status, quality, and expansion of the NIH full-length cDNA project: the Mammalian Gene Collection (MGC). *Genome Res.* 14: 2121-2127.
6. Bechtel, S., et al. 2007. The full-ORF clone resource of the German cDNA Consortium. *BMC Genomics* 8: 399.
7. Dephoure, N., et al. 2008. A quantitative atlas of mitotic phosphorylation. *Proc. Natl. Acad. Sci. USA* 105: 10762-10767.

CHROMOSOMAL LOCATION

Genetic locus: ZKSCAN2 (human) mapping to 16p12.1.

SOURCE

ZKSCAN2 (F-8) is a mouse monoclonal antibody raised against amino acids 132-216 mapping within an internal region of ZKSCAN2 of human origin.

PRODUCT

Each vial contains 200 µg IgG₁ kappa light chain in 1.0 ml of PBS with < 0.1% sodium azide and 0.1% gelatin.

ZKSCAN2 (F-8) is available conjugated to agarose (sc-514383 AC), 500 µg/0.25 ml agarose in 1 ml, for IP; to HRP (sc-514383 HRP), 200 µg/ml, for WB, IHC(P) and ELISA; to either phycoerythrin (sc-514383 PE), fluorescein (sc-514383 FITC), Alexa Fluor® 488 (sc-514383 AF488), Alexa Fluor® 546 (sc-514383 AF546), Alexa Fluor® 594 (sc-514383 AF594) or Alexa Fluor® 647 (sc-514383 AF647), 200 µg/ml, for WB (RGB), IF, IHC(P) and FCM; and to either Alexa Fluor® 680 (sc-514383 AF680) or Alexa Fluor® 790 (sc-514383 AF790), 200 µg/ml, for Near-Infrared (NIR) WB, IF and FCM.

APPLICATIONS

ZKSCAN2 (F-8) is recommended for detection of ZKSCAN2 of human origin by Western Blotting (starting dilution 1:100, dilution range 1:100-1:1000), immunoprecipitation [1-2 µg per 100-500 µg of total protein (1 ml of cell lysate)], immunofluorescence (starting dilution 1:50, dilution range 1:50-1:500) and solid phase ELISA (starting dilution 1:30, dilution range 1:30-1:3000).

Suitable for use as control antibody for ZKSCAN2 siRNA (h): sc-93274, ZKSCAN2 shRNA Plasmid (h): sc-93274-SH and ZKSCAN2 shRNA (h) Lentiviral Particles: sc-93274-V.

Molecular Weight of ZKSCAN2 isoforms 1/2: 111/58 kDa.

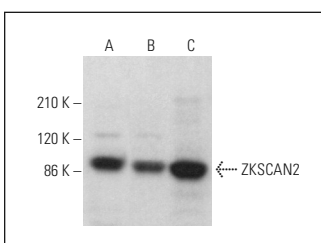
Positive Controls: SK-N-SH cell lysate: sc-2410, MES-SA/Dx5 cell lysate: sc-2284 or HeLa whole cell lysate: sc-2200.

RECOMMENDED SUPPORT REAGENTS

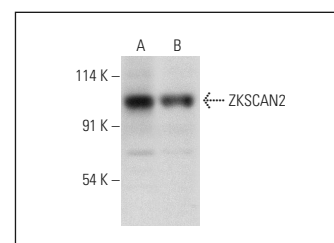
To ensure optimal results, the following support reagents are recommended:

- 1) Western Blotting: use m-IgGκ BPHRP: sc-516102 or m-IgGκ BPHRP (Cruz Marker): sc-516102-CM (dilution range: 1:1000-1:10000), Cruz Marker™ Molecular Weight Standards: sc-2035, UltraCruz® Blocking Reagent: sc-516214 and Western Blotting Luminol Reagent: sc-2048.
- 2) Immunoprecipitation: use Protein A/G PLUS-Agarose: sc-2003 (0.5 ml agarose/2.0 ml).
- 3) Immunofluorescence: use m-IgGκ BP-FITC: sc-516140 or m-IgGκ BP-PE: sc-516141 (dilution range: 1:50-1:200) with UltraCruz® Mounting Medium: sc-24941 or UltraCruz® Hard-set Mounting Medium: sc-359850.

DATA



ZKSCAN2 (F-8): sc-514383. Western blot analysis of ZKSCAN2 expression in HeLa (A), U-87 MG (B) and SK-N-SH (C) whole cell lysates.



ZKSCAN2 (F-8): sc-514383. Western blot analysis of ZKSCAN2 expression in HeLa (A) and MES-SA/Dx5 (B) whole cell lysates.

STORAGE

Store at 4° C, **DO NOT FREEZE**. Stable for one year from the date of shipment. Non-hazardous. No MSDS required.

RESEARCH USE

For research use only, not for use in diagnostic procedures.

PROTOCOLS

See our web site at www.scbt.com for detailed protocols and support products.

Alexa Fluor® is a trademark of Molecular Probes, Inc., Oregon, USA