

Cactin (C-2): sc-514620

BACKGROUND

Cactin, also known as fSAPc, NY-REN-24 or C19orf29, is a 758 amino acid nuclear protein that colocalizes with NFKBIL1 (NFκB inhibitor-like protein 1). Involved in the regulation of innate immune responses, Cactin may play a role in early embryonic development and pre-mRNA splicing. Cactin acts as a negative regulator of Toll-like receptor and IRF (interferon-regulatory factor) signaling pathways. In response to endogenous pro-inflammatory stimuli, Cactin regulates the transcriptional activation of NFκB genes. The gene encoding Cactin, which maps to human chromosome 19p13.3 and mouse chromosome 10 C1, may be associated with renal-cell carcinoma patients. Cactin exists as two alternatively spliced isoforms.

REFERENCES

1. Scanlan, M.J., Gordan, J.D., Williamson, B., Stockert, E., Bander, N.H., Jongeneel, V., Gure, A.O., Jäger, D., Jäger, E., Knuth, A., Chen, Y.T. and Old, L.J. 1999. Antigens recognized by autologous antibody in patients with renal-cell carcinoma. *Int. J. Cancer* 83: 456-464.
2. Jurica, M.S., Licklider, L.J., Gygi, S.R., Grigorieff, N. and Moore, M.J. 2002. Purification and characterization of native spliceosomes suitable for three-dimensional structural analysis. *RNA* 8: 426-439.
3. Talmud, P.J., Drenos, F., Shah, S., Shah, T., Palmen, J., Verzilli, C., Gaunt, T.R., Pallas, J., Lovering, R., Li, K., Casas, J.P., Sofat, R., Kumari, M., Rodriguez, S., Johnson, T., Newhouse, S.J., Dominiczak, A., et al. 2009. Gene-centric association signals for lipids and apolipoproteins identified via the HumanCVD BeadChip. *Am. J. Hum. Genet.* 85: 628-642.
4. Bailey, S.D., Xie, C., Do, R., Montpetit, A., Diaz, R., Mohan, V., Keavney, B., Yusuf, S., Gerstein, H.C., Engert, J.C. and Anand, S. 2010. Variation at the NFATC2 locus increases the risk of thiazolidinedione-induced edema in the Diabetes REduction Assessment with ramipril and rosiglitazone Medication (DREAM) study. *Diabetes Care*. 33: 2250-2253.
5. Atzei, P., Gargan, S., Curran, N. and Moynagh, P.N. 2010. Cactin targets the MHC class III protein IκB-like (IκBL) and inhibits NFκB and interferon-regulatory factor signaling pathways. *J. Biol. Chem.* 285: 36804-36817.

CHROMOSOMAL LOCATION

Genetic locus: CACTIN (human) mapping to 19p13.3.

SOURCE

Cactin (C-2) is a mouse monoclonal antibody raised against amino acids 322-484 mapping within an internal region of Cactin of human origin.

PRODUCT

Each vial contains 200 µg IgG₁ in 1.0 ml of PBS with < 0.1% sodium azide and 0.1% gelatin.

STORAGE

Store at 4° C, **DO NOT FREEZE**. Stable for one year from the date of shipment. Non-hazardous. No MSDS required.

APPLICATIONS

Cactin (C-2) is recommended for detection of Cactin of human origin by Western Blotting (starting dilution 1:100, dilution range 1:100-1:1000), immunoprecipitation [1-2 µg per 100-500 µg of total protein (1 ml of cell lysate)], immunofluorescence (starting dilution 1:50, dilution range 1:50-1:500) and solid phase ELISA (starting dilution 1:30, dilution range 1:30-1:3000).

Suitable for use as control antibody for Cactin siRNA (h): sc-97608, Cactin shRNA Plasmid (h): sc-97608-SH and Cactin shRNA (h) Lentiviral Particles: sc-97608-V.

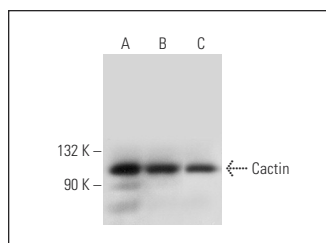
Molecular Weight of C11orf52: 14 kDa.

Positive Controls: Ca Ski whole cell lysate: sc-364360, RT-4 whole cell lysate: sc-364257 or HeLa whole cell lysate: sc-2200.

RECOMMENDED SECONDARY REAGENTS

To ensure optimal results, the following support (secondary) reagents are recommended: 1) Western Blotting: use goat anti-mouse IgG-HRP: sc-2005 (dilution range: 1:2000-1:32,000) or Cruz Marker™ compatible goat anti-mouse IgG-HRP: sc-2031 (dilution range: 1:2000-1:5000), Cruz Marker™ Molecular Weight Standards: sc-2035, TBS Blotto A Blocking Reagent: sc-2333 and Western Blotting Luminol Reagent: sc-2048. 2) Immunoprecipitation: use Protein A/G PLUS-Agarose: sc-2003 (0.5 ml agarose/2.0 ml). 3) Immunofluorescence: use goat anti-mouse IgG-FITC: sc-2010 (dilution range: 1:100-1:400) or goat anti-mouse IgG-TR: sc-2781 (dilution range: 1:100-1:400) with UltraCruz™ Mounting Medium: sc-24941.

DATA



Cactin (C-2): sc-514620. Western blot analysis of Cactin expression in Ca Ski (A), HeLa (B) and RT-4 (C) whole cell lysates.

RESEARCH USE

For research use only, not for use in diagnostic procedures.

PROTOCOLS

See our web site at www.scbt.com or our catalog for detailed protocols and support products.