

LACE1 (C-3): sc-514632

BACKGROUND

LACE1 (lactation elevated protein 1) is a 481 amino acid protein that belongs to the AFG1 ATPase family. LACE1 is encoded by a gene mapping to human chromosome 6. Making up nearly 6% of the human genome, chromosome 6 contains around 1,200 genes within 170 million base pairs of sequence. Deletion of a portion of the q arm of chromosome 6 is associated with early onset intestinal cancer suggesting the presence of a cancer susceptibility locus. Porphyria cutanea tarda is associated with chromosome 6 through the HFE gene which, when mutated, predisposes an individual to developing this porphyria. Notably, the PARK2 gene, which is associated with Parkinson's disease, and the genes encoding the major histocompatibility complex proteins, which are key molecular components of the immune system and determine predisposition to rheumatic diseases, are also located on chromosome 6. Stickler syndrome, 21-hydroxylase deficiency and maple syrup urine disease are also associated with genes on chromosome 6. A bipolar disorder susceptibility locus has been identified on the q arm of chromosome 6.

REFERENCES

1. Brunner, H.G., et al. 1994. A Stickler syndrome gene is linked to chromosome 6 near the COL11A2 gene. *Hum. Mol. Genet.* 3: 1561-1564.
2. Mungall, A.J., et al. 2003. The DNA sequence and analysis of human chromosome 6. *Nature* 425: 805-811.
3. Cesari, R., et al. 2003. Parkin, a gene implicated in autosomal recessive juvenile parkinsonism, is a candidate tumor suppressor gene on chromosome 6q25-q27. *Proc. Natl. Acad. Sci. USA* 100: 5956-5961.
4. Bläker, H., et al. 2008. Recurrent deletions at 6q in early age of onset non-HNPCC- and non-FAP-associated intestinal carcinomas. Evidence for a novel cancer susceptibility locus at 6q14-q22. *Genes Chromosomes Cancer* 47: 159-164.
5. Fan, J., et al. 2010. Linkage disequilibrium mapping of the chromosome 6q21-22.31 bipolar I disorder susceptibility locus. *Am. J. Med. Genet. B Neuropsychiatr. Genet.* 153B: 29-37.

CHROMOSOMAL LOCATION

Genetic locus: LACE1 (human) mapping to 6q21; Lace1 (mouse) mapping to 10 B2.

SOURCE

LACE1 (C-3) is a mouse monoclonal antibody specific for an epitope mapping between amino acids 424-442 near the C-terminus of LACE1 of human origin.

PRODUCT

Each vial contains 200 µg IgM kappa light chain in 1.0 ml of PBS with < 0.1% sodium azide and 0.1% gelatin.

Blocking peptide available for competition studies, sc-514632 P, (100 µg peptide in 0.5 ml PBS containing < 0.1% sodium azide and 0.2% stabilizer protein).

APPLICATIONS

LACE1 (C-3) is recommended for detection of LACE1 of mouse, rat and human origin by Western Blotting (starting dilution 1:100, dilution range 1:100-1:1000), immunoprecipitation [1-2 µg per 100-500 µg of total protein (1 ml of cell lysate)], immunofluorescence (starting dilution 1:50, dilution range 1:50-1:500), immunohistochemistry (including paraffin-embedded sections) (starting dilution 1:50, dilution range 1:50-1:500) and solid phase ELISA (starting dilution 1:30, dilution range 1:30-1:3000).

Suitable for use as control antibody for LACE1 siRNA (h): sc-95180, LACE1 siRNA (m): sc-146630, LACE1 shRNA Plasmid (h): sc-95180-SH, LACE1 shRNA Plasmid (m): sc-146630-SH, LACE1 shRNA (h) Lentiviral Particles: sc-95180-V and LACE1 shRNA (m) Lentiviral Particles: sc-146630-V.

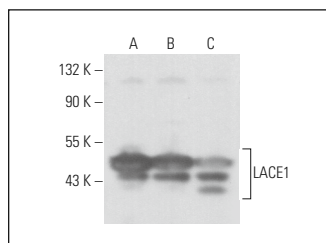
Molecular Weight of LACE1: 55 kDa.

Positive Controls: c4 whole cell lysate: sc-364186, NIH/3T3 whole cell lysate: sc-2210 or KNRK whole cell lysate: sc-2214.

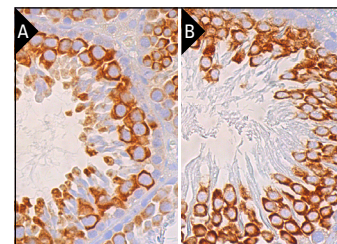
RECOMMENDED SUPPORT REAGENTS

To ensure optimal results, the following support reagents are recommended: 1) Western Blotting: use m-IgGκ BP-HRP: sc-516102 or m-IgGκ BP-HRP (Cruz Marker): sc-516102-CM (dilution range: 1:1000-1:10000), Cruz Marker™ Molecular Weight Standards: sc-2035, UltraCruz® Blocking Reagent: sc-516214 and Western Blotting Luminol Reagent: sc-2048. 2) Immunoprecipitation: use Protein L-Agarose: sc-2336 (0.5 ml agarose/2.0 ml). 3) Immunofluorescence: use m-IgGκ BP-FITC: sc-516140 or m-IgGκ BP-PE: sc-516141 (dilution range: 1:50-1:200) with UltraCruz® Mounting Medium: sc-24941 or UltraCruz® Hard-set Mounting Medium: sc-359850. 4) Immunohistochemistry: use m-IgGκ BP-HRP: sc-516102 with DAB, 50X: sc-24982 and Immunohisto-mount: sc-45086, or Organo/Limonene Mount: sc-45087.

DATA



LACE1 (C-3): sc-514632. Western blot analysis of LACE1 expression in NIH/3T3 (A), c4 (B) and KNRK (C) whole cell lysates.



LACE1 (C-3): sc-514632. Immunoperoxidase staining of formalin fixed, paraffin-embedded mouse testis (A) and rat testis (B) tissue showing cytoplasmic staining of cells in seminiferous ducts. Blocked with 0.25X UltraCruz® Blocking Reagent: sc-516214. Detected with m-IgGκ BP-B: sc-516142 and ImmunoCruz® ABC Kit: sc-516216.

STORAGE

Store at 4° C, **DO NOT FREEZE**. Stable for one year from the date of shipment. Non-hazardous. No MSDS required.

RESEARCH USE

For research use only, not for use in diagnostic procedures.