

Syntaxin 2 (A-12): sc-514642

BACKGROUND

Correct vesicular transport is essential to the survival of eukaryotic cells. This process is determined by specific pairing of vesicle-associated SNAREs (v-SNAREs) with those on the target membrane (t-SNAREs). This complex then recruits soluble NSF attachment proteins (SNAPs) and N-ethylmaleimide-sensitive factor (NSF) to form the highly stable SNAP receptor (SNARE) complex. The formation of a SNARE complex pulls the vesicle and target membrane together and may provide the energy to drive fusion of the lipid bilayers. Syntaxins, a family of proteins involved in the fusion of synaptic vesicles with the plasma membrane, display broad tissue distribution and contain carboxy-terminal hydrophobic domains that direct themselves to their respective intracellular compartments. Syntaxin 2 is a t-SNARE that localizes to the apical plasma membrane and intracellular vesicular structures. Syntaxin 2, along with SNAP-23, is required for regulated surfactant secretion.

REFERENCES

1. Elferink, L.A., et al. 1993. A role for synaptotagmin (p65) in regulated exocytosis. *Cell* 72: 153-159.
2. Bennett, M.K., et al. 1993. The syntaxin family of vesicular transport receptors. *Cell* 74: 863-873.
3. Yamaguchi, K. and Akagawa, K. 1994. Exocytosis relating proteins in the nervous system. *Neurosci. Res.* 20: 289-292.
4. Hayashi, T., et al. 1994. Synaptic vesicle membrane fusion complex: action of clostridial neurotoxins on assembly. *EMBO J.* 13: 5051-5061.
5. McMahon, H.T. and Sudhof, T.C. 1995. Synaptic core complex of synaptobrevin, syntaxin, and SNAP25 forms high affinity α -SNAP binding site. *J. Biol. Chem.* 270: 2213-2217.
6. Edelmann, L., et al. 1995. Synaptobrevin binding to synaptophysin: a potential mechanism for controlling the exocytosis fusion machine. *EMBO J.* 14: 224-231.
7. Lin, R.C. and Scheller, R.H. 1997. Structural organization of the synaptic exocytosis core complex. *Neuron* 19: 1087-1094.
8. Barnard, R.J., et al. 1997. Stimulation of NSF ATPase activity by α -SNAP is required for SNARE complex disassembly and exocytosis. *J. Cell Biol.* 139: 875-883.
9. Abonyo, B.O., et al. 2004. Syntaxin 2 and SNAP-23 are required for regulated surfactant secretion. *Biochemistry* 43: 3499-3506.

CHROMOSOMAL LOCATION

Genetic locus: STX2 (human) mapping to 12q24.33.

SOURCE

Syntaxin 2 (A-12) is a mouse monoclonal antibody raised against amino acids 210-252 mapping near the C-terminus of Syntaxin 2 of human origin.

PRODUCT

Each vial contains 200 μ g IgG₁ in 1.0 ml of PBS with < 0.1% sodium azide and 0.1% gelatin.

APPLICATIONS

Syntaxin 2 (A-12) is recommended for detection of Syntaxin 2 of human origin by Western Blotting (starting dilution 1:100, dilution range 1:100-1:1000), immunoprecipitation [1-2 μ g per 100-500 μ g of total protein (1 ml of cell lysate)], immunofluorescence (starting dilution 1:50, dilution range 1:50-1:500) and solid phase ELISA (starting dilution 1:30, dilution range 1:30-1:3000).

Suitable for use as control antibody for Syntaxin 2 siRNA (h): sc-41326, Syntaxin 2 shRNA Plasmid (h): sc-41326-SH and Syntaxin 2 shRNA (h) Lentiviral Particles: sc-41326-V.

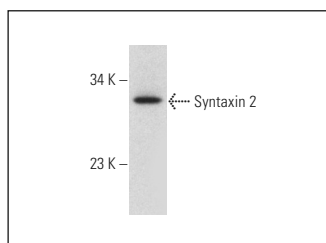
Molecular Weight of Syntaxin 2: 35 kDa.

Positive Controls: SH-SY5Y cell lysate: sc-3812.

RECOMMENDED SECONDARY REAGENTS

To ensure optimal results, the following support (secondary) reagents are recommended: 1) Western Blotting: use goat anti-mouse IgG-HRP: sc-2005 (dilution range: 1:2000-1:32,000) or Cruz Marker™ compatible goat anti-mouse IgG-HRP: sc-2031 (dilution range: 1:2000-1:5000), Cruz Marker™ Molecular Weight Standards: sc-2035, TBS Blotto A Blocking Reagent: sc-2333 and Western Blotting Luminol Reagent: sc-2048. 2) Immunoprecipitation: use Protein A/G PLUS-Agarose: sc-2003 (0.5 ml agarose/2.0 ml). 3) Immunofluorescence: use goat anti-mouse IgG-FITC: sc-2010 (dilution range: 1:100-1:400) or goat anti-mouse IgG-TR: sc-2781 (dilution range: 1:100-1:400) with UltraCruz™ Mounting Medium: sc-24941.

DATA



Syntaxin 2 (A-12): sc-514642. Western blot analysis of Syntaxin 2 expression in SH-SY5Y whole cell lysate.

STORAGE

Store at 4° C, ****DO NOT FREEZE****. Stable for one year from the date of shipment. Non-hazardous. No MSDS required.

RESEARCH USE

For research use only, not for use in diagnostic procedures.

PROTOCOLS

See our web site at www.scbt.com or our catalog for detailed protocols and support products.